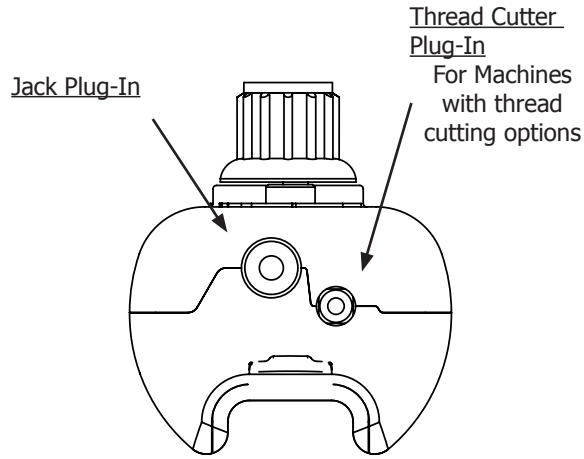


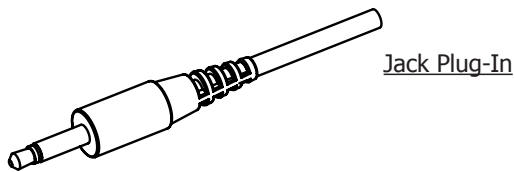
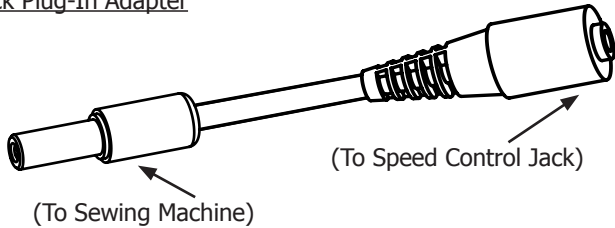
Grace Speed Control

The Grace Speed Control is designed to work with almost any sewing machine.

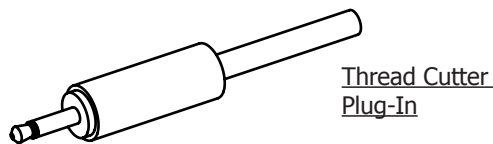
Connecting to your sewing machine:



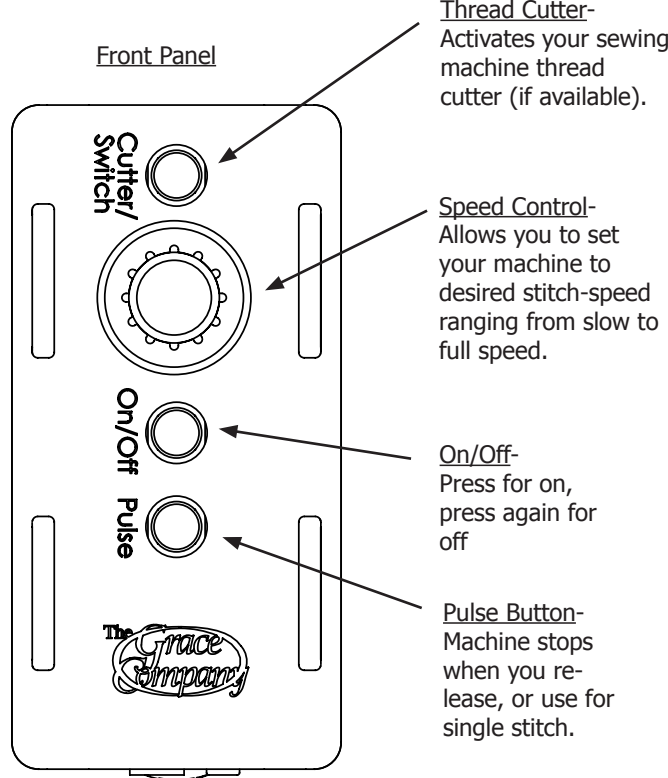
Jack Plug-In Adapter



Jack Plug-In



Thread Cutter Plug-In



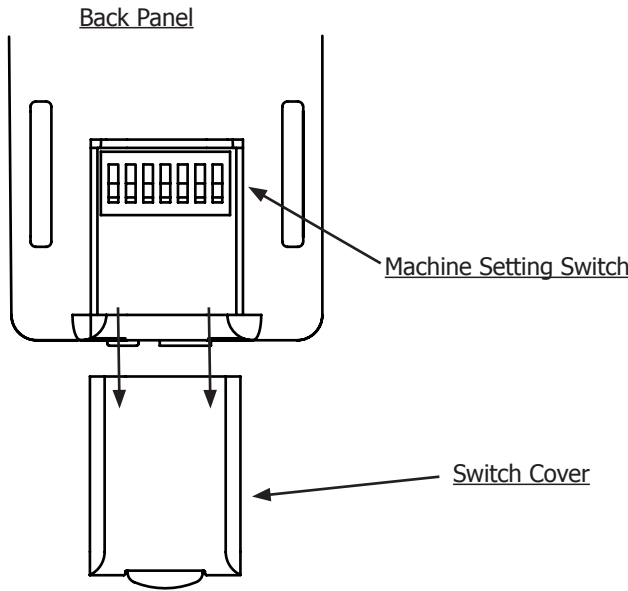
Front Panel

Thread Cutter-
Activates your sewing machine thread cutter (if available).

Speed Control-
Allows you to set your machine to desired stitch-speed ranging from slow to full speed.

On/Off-
Press for on, press again for off

Pulse Button-
Machine stops when you release, or use for single stitch.



Back Panel

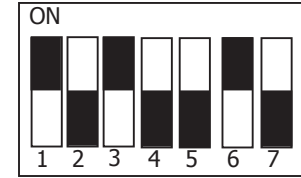
Machine Setting Switch

Switch Cover

For Technical Assistance please contact:

The Grace Company
1-800-264-0644

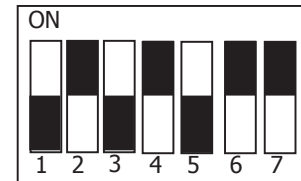
Setting 1



Juki / Singer

black indicates switch position

Setting 2

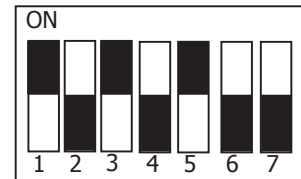


Baby Lock / Brother

Janome / New Home

black indicates switch position

Setting 3



Bernina / Pfaff

black indicates switch position

The Grace Speed Control Switch is compatible with most DC-powered machines. DC-powered machines usually have a separate foot pedal plug in and power cord plug in.