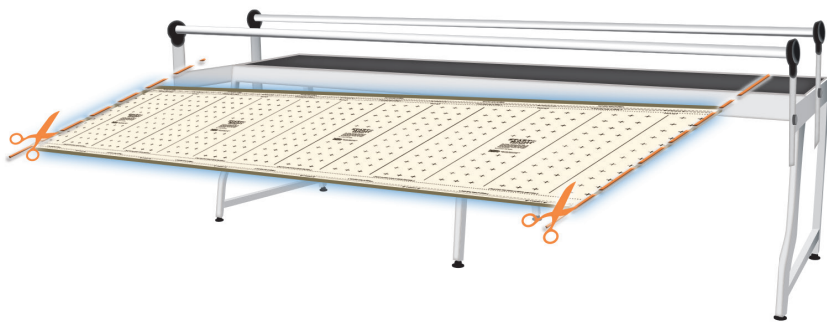


START RIGHT

Precision Cloth Leaders



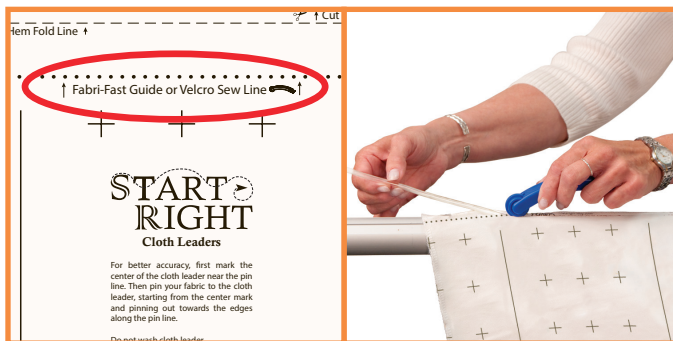
If your frame is "crib" size:

The cloth leaders are made to fit the full "queen" sized frame. If your frame is set up in the smaller "crib" size, cut your cloth leaders to the length of your rail minus 4 inches. Hem your cut edges.

Cloth Leader Attachment

(can be attached with Fabri-Fast or Velcro)

Fabri-Fast Installation



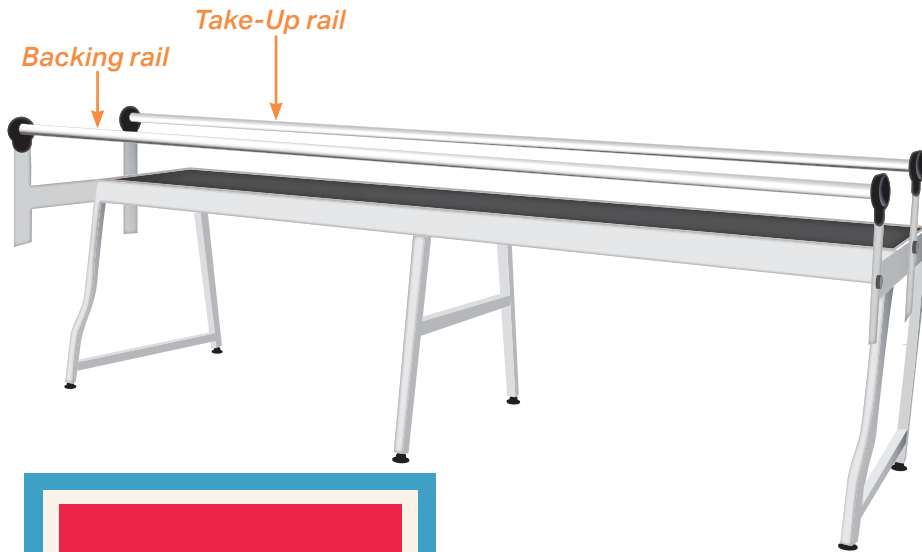
1. Locate the Fabri-Fast Guide on the cloth leader, shown above left.
2. Position the Fabri-Fast line of the cloth leader over the slot on the rail.
3. Press the plastic tubing and cloth into the slot using the Fabri-Fast tool, shown above right.

Velcro Installation



1. If needed, cut the Velcro strips to the same length as the rail.
2. Slowly remove the tape backing from the end of the Velcro just a few inches.
3. Stick the Velcro to the rail, continuing to remove the backing and working your way down the length of the entire rail. Make sure your Velcro strip stays straight along the rail.
4. The cloth leader can now be attached to the rail with the Velcro. Keep the cloth leader centered on the rail when attaching it.

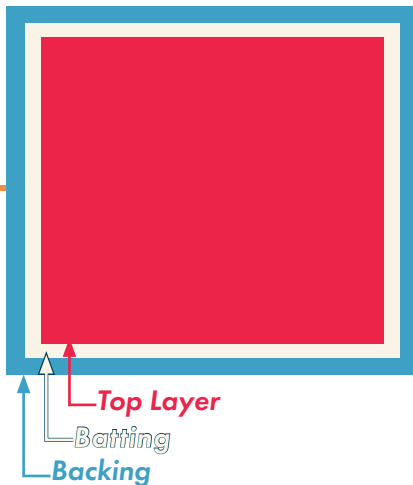
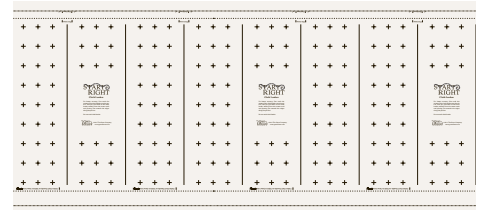
Cloth Leader Rail Positioning



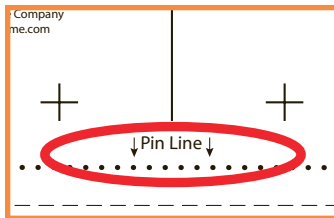
Shorter leader: for take-up rail



Longer leader: for backing rail

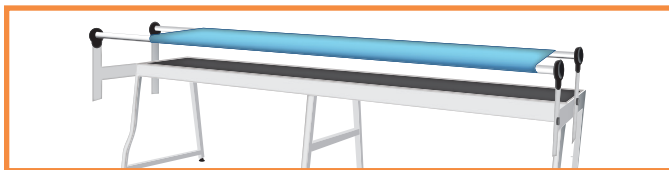


A quilt-sandwich is made of three layers: the top layer, the batting, and the backing layer. When Cutting these pieces, it is helpful to make the batting slightly larger than the top, and the backing slightly larger than the batting.



Pinning Fabric

Line the fabric layer with the "Pin Line" on the cloth leader. It is helpful to mark the center of the leader and your fabric layer, and then match up the center marks you made, and pin along the Pin Line, from the center out.



1. Pin the backing layer to the cloth leaders on the take-up rail and the backing rail. The finished side should be **face-down**. Roll most of the fabric on the backing rail.



2. Pin the batting to the backing layer and hang it down behind the third rail. It should not be pinned to a cloth leader.



3. Pin the quilt top to the backing and batting. The finished side should be **face-up**.