

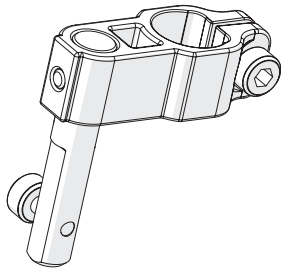


Q'nique19 Machine Presser Foot Collar Instructions

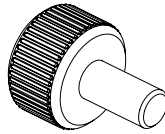
Use:

The Presser Foot Collar can be used to quickly swap between a variety of foot accessories for your machine.

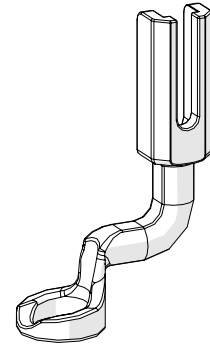
Parts List:



Presser Foot Collar SM19
SMP-09-14525



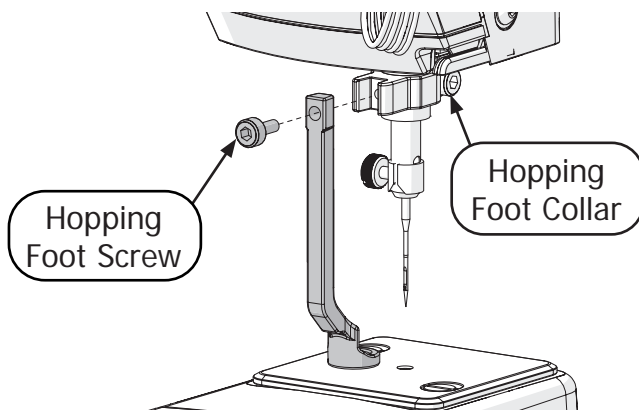
SHCS M3 x 8 mm
HDW-03-10966
(Preinstalled)



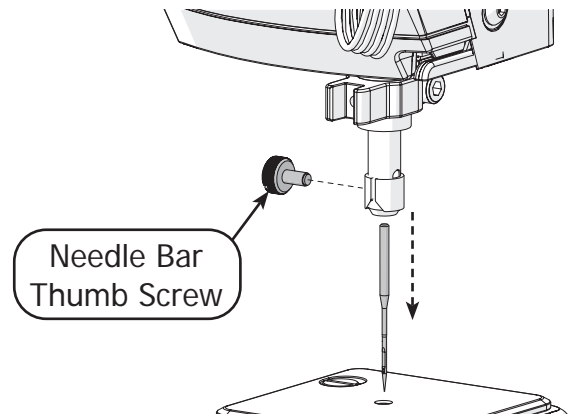
Standard Hopping Foot
SMP-04-10057

Installation Instructions:

① Use a 3 mm Allen wrench to remove the **screw** attaching the hopping foot to the **hopping foot collar** on your machine.

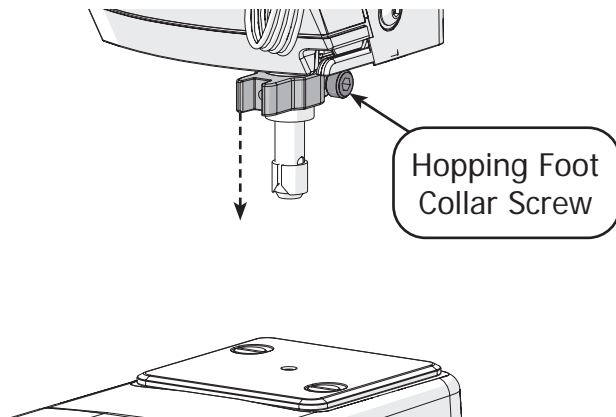


② Remove the **needle bar thumb screw** and carefully pull out the needle.

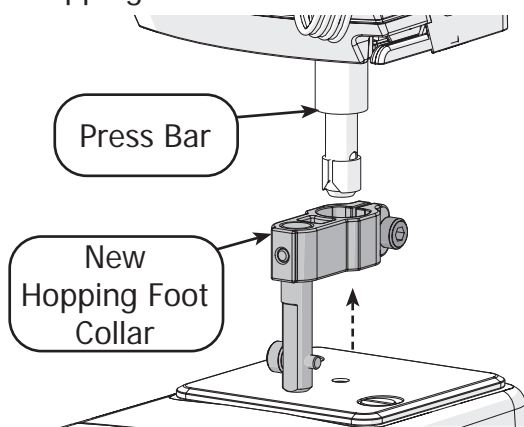


Installation Instructions Continued:

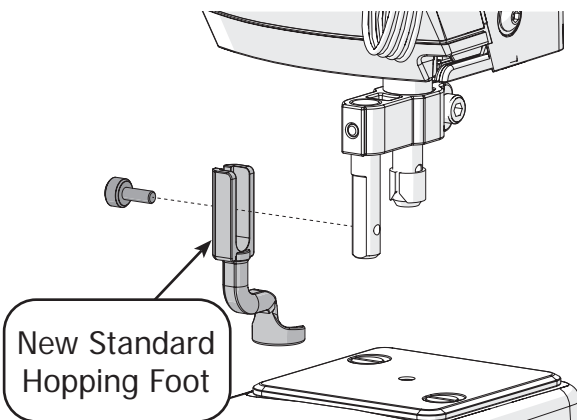
- 3 With a 3 mm Allen wrench, loosen the **hopping foot collar screw** just enough so that the collar can be pulled off the machine.



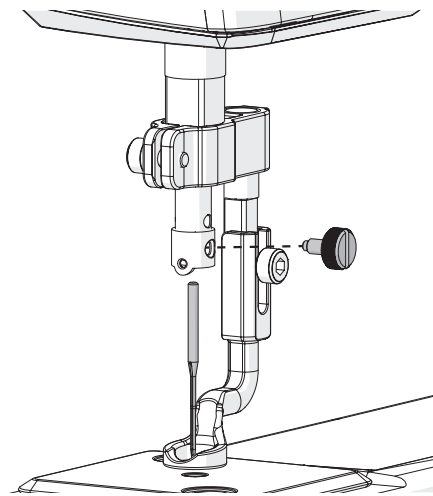
- 4 Slide the **new hopping foot collar** that came with this kit onto the press bar. Make sure the bottom of the collar is even with the bottom of the **press bar**. Hold in place with the hopping foot collar screw.



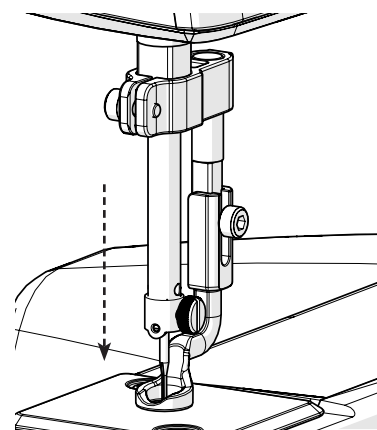
- 5 Place the **new standard hopping foot** onto the hopping foot collar bar. Attach with a hopping foot screw loosely enough that the hopping foot can slide up and down.



- 6 Reinstall your machine's needle and needle thumb screw (see your machine manual for details).



- 7 Carefully lower the needle to the lowest position.



- 8 Slide the **hopping foot height tool** under the hopping foot, fitting the groove around the needle. Tighten the hopping foot screw with a 3 mm Allen wrench.

