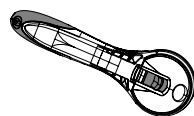


# StraightCut

## Included Parts

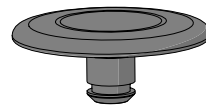
(Some parts pre-assembled)



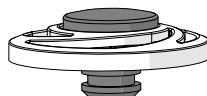
Handle  
TC-09-1463



60 mm Blade  
TC-08-1103



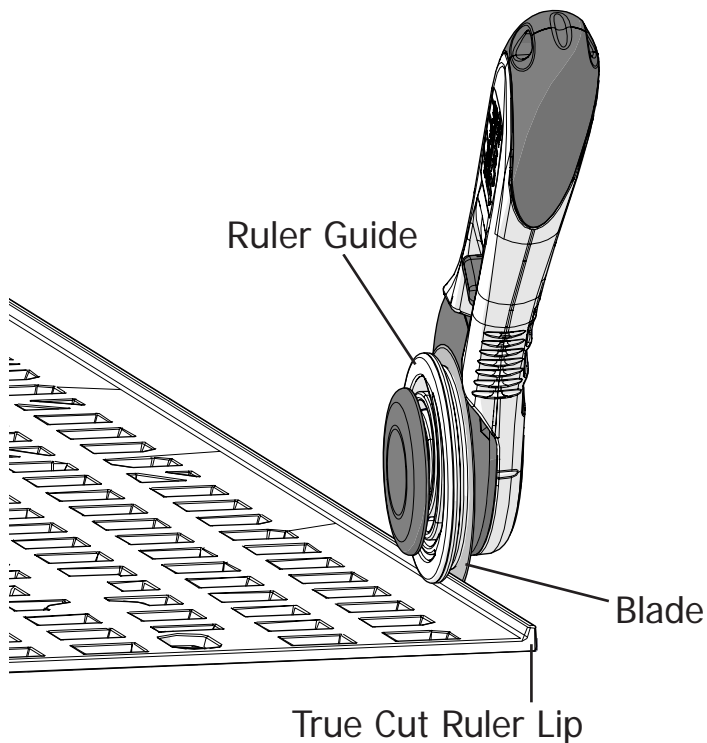
Guide Pin  
TC-05-1457



Pin  
TC-09-1494

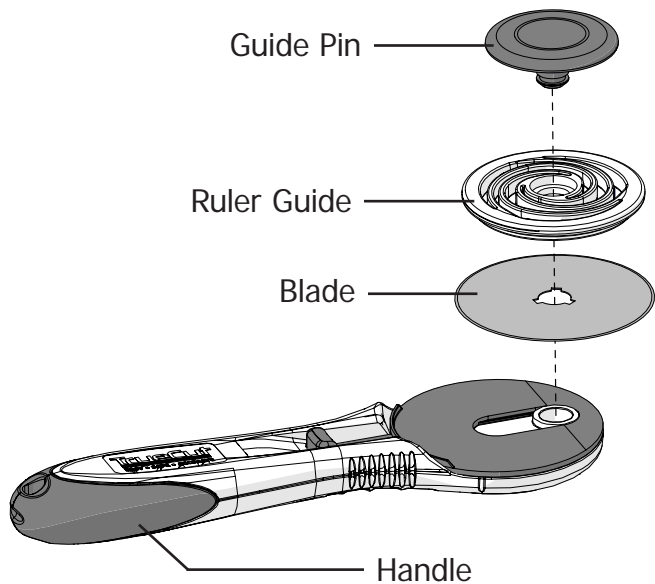


Ruler Guide  
TC-05-1454

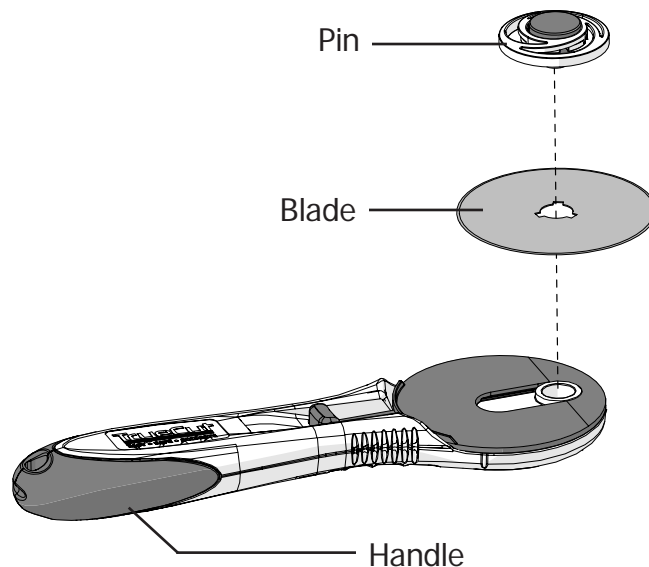


## Configurations

Can be set up with or without the ruler guide.



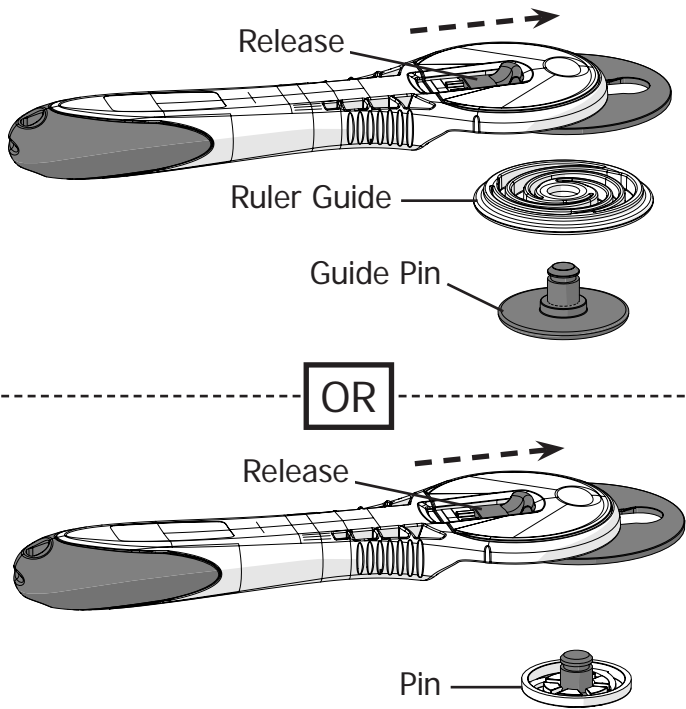
**Pictured:** With Ruler Guide



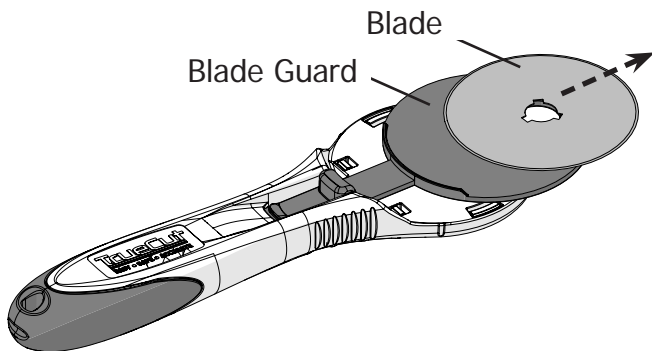
**Pictured:** Without Ruler Guide

# Changing the Blade

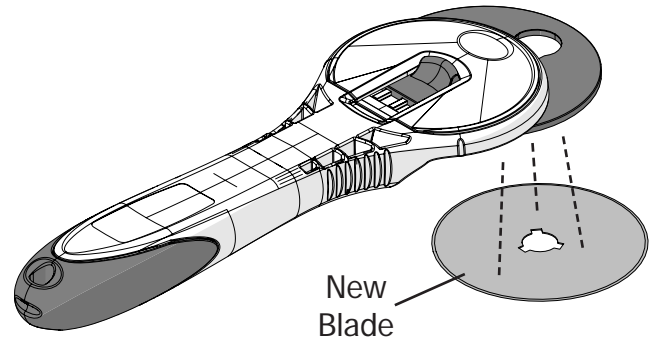
1 Push out the **release** to drop the **pin**.



2 Carefully slide the **blade** off the **blade guard**.



3 Position the handle over the **new, sharp blade**. The magnet will pick it up.



4 Press the **pin** into the handle until it clicks in place.

