

# QCT4

## DREAM BIG PANEL

### TUTORIAL



No part of this publication may be reproduced, stored in a retrieval system or transmitted in any form by any means, electronic, mechanical, photocopying, scanning or otherwise except as permitted by the prior written permission of the author.

© September 2018 Sandra W. Wilbourne "The Midnight Quilter"  
In Collaboration With The Grace Company All Rights Reserved

## QCT4 “Dream Big” Tutorial

### Step 1: Preparation:

- Purchase the Dream Big Panel of your choice.
- Purchase a Dream Big Digital pattern of your choice. We chose Melinda Sword’s pattern from Gulf Coast Quilting, 2018. <https://www.craftsy.com/quilting/patterns/dream-big-digital-quilting-design/608668> or you may wish to purchase your pattern from Urban Elementz <https://www.urbanelementz.com>. Search Dream Big. If you need to select a file type choose CQP

Please note: The following link for Bold Notions, which offers the panel along with an option of purchasing coordinating thread to match your panel choice. <https://boldnotionquilting.com/products>

- Cut the selvages off your panel making sure that you mark the bottom and the top of the panel prior to cutting as this will be very important when you start to quilt your panel. The selvege with the writing is the bottom of the panel.
- Prepare your quilt as desired.
- You may wish to sew on Borders (This is optional and totally personal preference) However, this tutorial will address how to quilt this panel with at least 1 border. You may also want to consider using double batting.
- Prior to quilting your panel. It is recommended that you print the PDF file that came with your pattern file. The PDF has corresponding numbers that corelate with the individual patterns in the file. This will assist you in keeping track of the individual patterns as you quilt. We found it helpful to check off each pattern as it was quilted.

### Step 2: Quilting the Center Design of Your Panel:

- Remember to make sure to load your quilt with the marked top to the take up rail and the marked bottom to the rail of your choice. This will ensure accurate pattern placement using the previously printed PDF file. Once your quilt has been loaded onto your frame you will need to scroll your quilt to display the center of the panel. You will begin quilting here and quilt from the center outward. Because you will be quilting from the center outward you should consider NOT basting your quilt on each side as basting may cause puckering as you quilt outward.
- You will continue by importing your pattern. Refer to the previous tutorial on Batch Import. This document may be found on:

Quilter’s Creative Touch FB page

<https://www.facebook.com/groups/QuiltersCreativeTouch/>

Quilting with Grace FB page

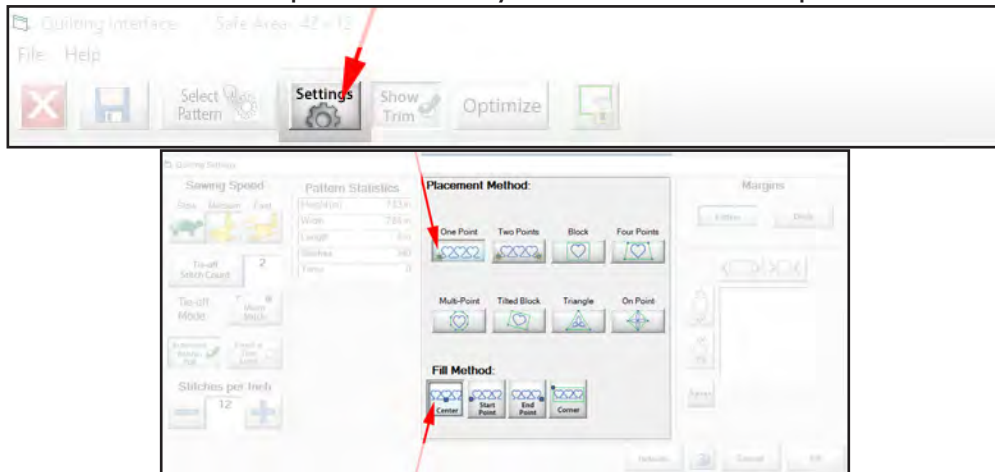
<https://www.facebook.com/groups/2063833633689529/>

The Grace Company Website

<https://www.graceframe.com/en/resources/tutorials>

**Please Note:** In this Tutorial we will be using the CQP file type. You may also use the QLI file type, but you will be sizing your pattern more.

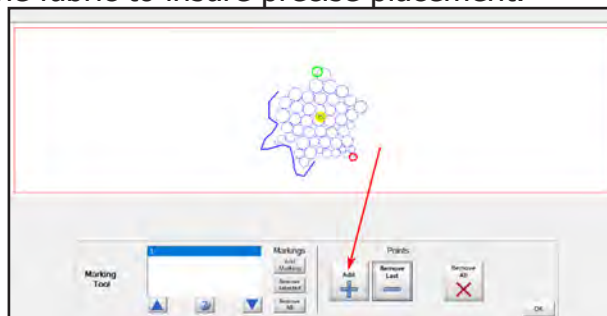
- Once pattern has been imported. Choose "Select and Sew". Set your "Top Left Safety Area" and your "Bottom Right Safety Area". Next choose your center design. Navigate to the top left of your screen and tap on "Settings". Under Setting select "One Point" for your "Placement Method". Next tap "Center" for your "Fill method". Tap "Ok".



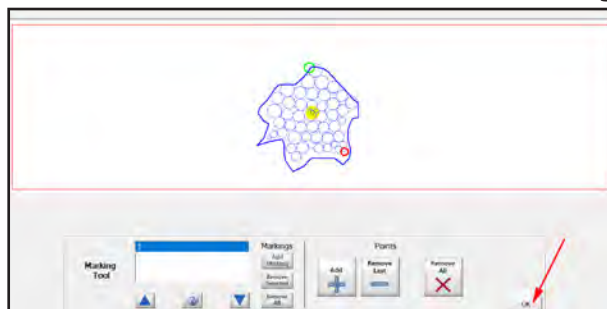
- Look to the top right corner of your screen and select "Plug Ins". Then choose "Marking Tool". This feature will allow you to capture points on your fabric to help you precisely place your pattern designs.



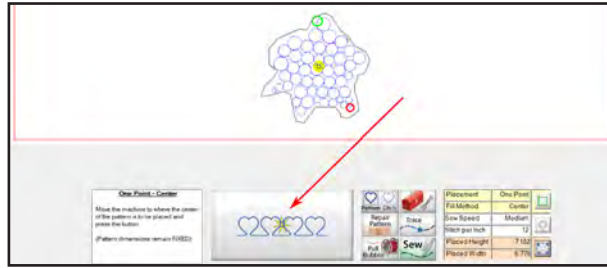
- Proceed to move your machine around the outside edges of the center design in the panel and tap "Add" to create a "Drawing" around the center design. These added points will correlate to the actual points on the fabric to insure precise placement.



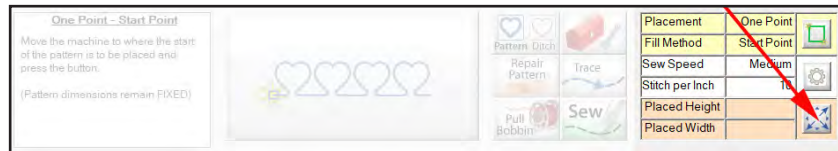
- After you have marked the entire outside area of the center design tap "Ok".



- Now you are ready to place the pattern. Move your machine to the center of the panel and tap your **"Center Placement"** button.

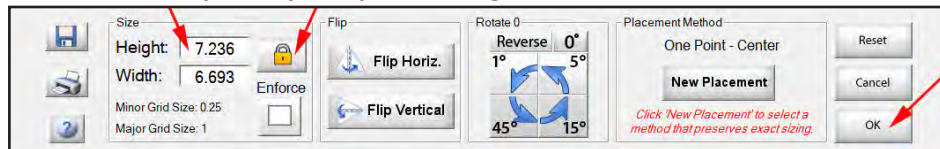


- To insure precise placement, you can continue to move your machine and tap on the placement button until your pattern is accurately placed inside the drawing.
- If you feel your pattern needs additional adjustments you may use the **"Pattern Sizer"** feature which can be found at the bottom right of your screen.



- Tap on the icon. **"Pattern Sizer"** is a feature that will allow you to precisely set and lock-in your pattern's dimensions so when they are placed and sewn you will know exactly what size they are. **"Pattern Sizer"** also lets you flip and rotate your patterns.

**Please Note:** If you feel you need to change the size of your pattern to fit within your drawing make sure the **Yellow Lock** is locked to keep the aspect ratio of the pattern accurate. You will only need to change your height **OR** your width. After changing your pattern size tap **"OK"** and return to the quilting interface screen to place your pattern again.



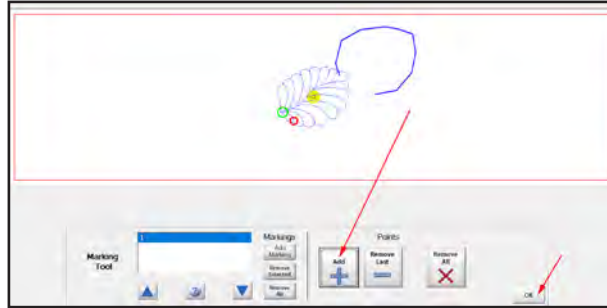
- Now you are ready to quilt your center pattern. Select **"Pull Bobbin"** and **"Sew"**.

### Step 3: Quilting the Remainder of Your Quilt Panel:

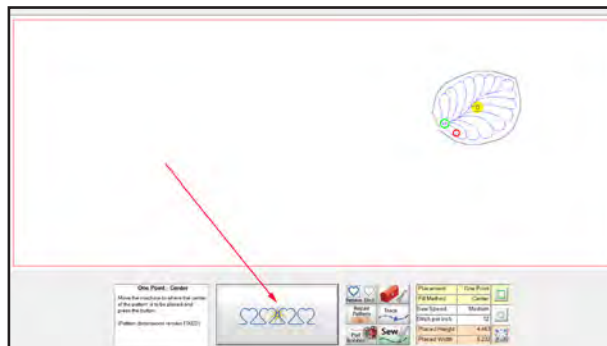
- Now you are ready to quilt your flower petals. Choose your next pattern to be quilted and go back into the marking tool feature and remove all previous markings by tapping on **"Remove All"**.



- Now proceed to mark your first petal by moving your machine around the outside edges of the petal and tapping **"Add"** to create a **"Drawing"** around the petal design. After you have marked the outside edges of the petal tap **"Ok"**.



- Now place your petal pattern by moving your machine to the center of the petal and again tapping the **"Center Placement"** button.



- As before, to insure precise placement move your machine and tap on the placement button until your pattern is accurately placed inside the drawing.
- Additional adjustments may be made as before using the **"Pattern Sizer"** feature and following the previously stated instructions found in **Step 2**.
- Once you are satisfied with your placement, select **"Pull Bobbin"** and **"Sew"**.
- Continue following these instructions to complete all petals within your safety area. Once they have been stitched scroll your quilt and continue repeating the process as described in the previous sections until all petals are stitched.

#### Step 4: Borders:

- Please refer to the previously published step by step guide on stitching Borders and Corners. Gold Card Border Tutorial. This document may be found on:

Quilter's Creative Touch FB page  
<https://www.facebook.com/groups/QuiltersCreativeTouch/>  
 Quilting with Grace FB page  
<https://www.facebook.com/groups/2063833633689529/>  
 The Grace Company Website  
<https://www.graceframe.com/en/resources/tutorials>

## Congratulations on Completing Your Dream Big Panel!!!

Please share your finished quilt(s) on the Quilter's Creative Touch FB page. If you found our tutorial helpful please consider referencing it in your post. Thanks so much and happy quilting!!