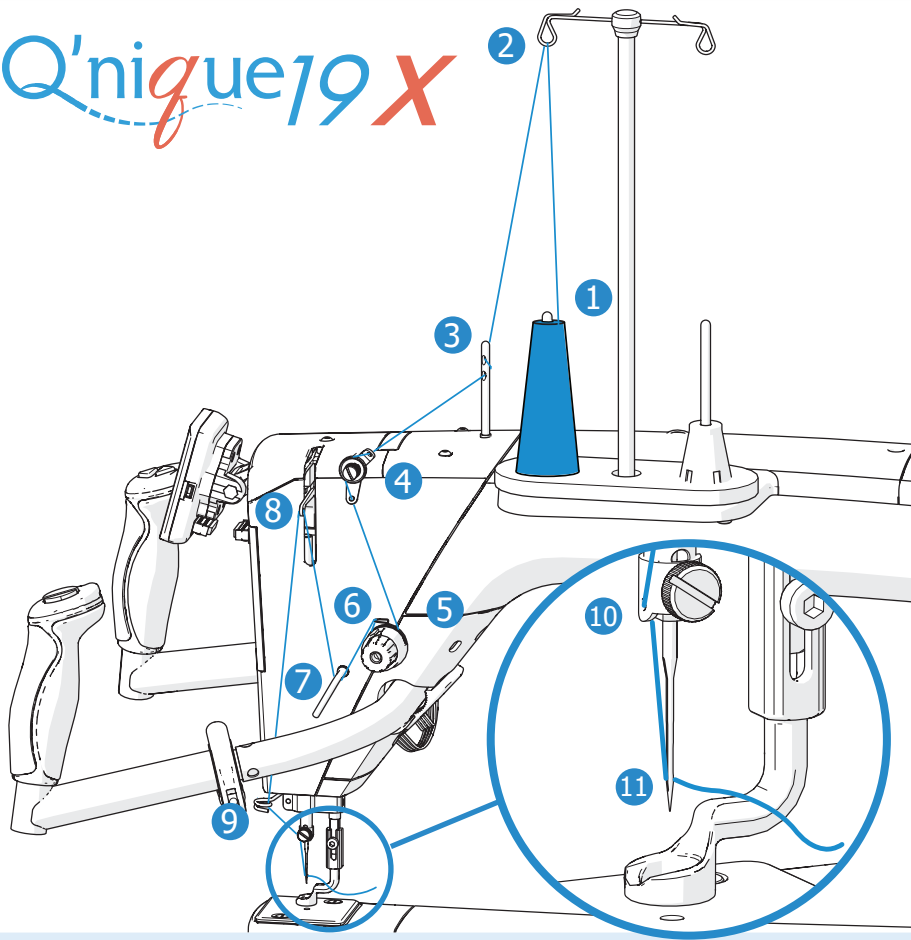


Q'nique19X

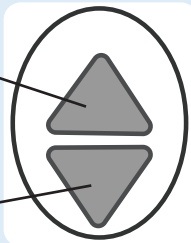
## Thread Guide



- 1 Thread Cone
- 2 Thread Mast
- 3 Thread Guide Rod
- 4 Small Tensioner
- 5 Thread Guide
- 6 Tensioner Check Spring
- 7 Thread Guide
- 8 Take-up Lever
- 9 Bottom Thread Guide
- 10 Needle Bar Eyelet
- 11 Eye of Needle

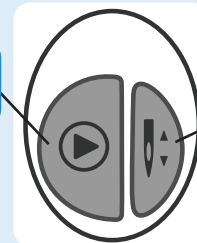
## Handlebar Button Controls

Increase



Decrease

Start/Stop  
Stitching



Single Stitch  
or Needle Up/  
Down (see  
Settings)

## Starting a New Project?

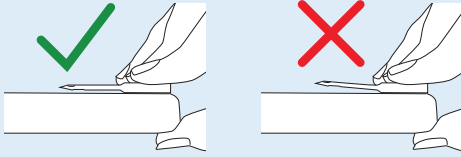
1. Gather fabric, batting, thread, and needles.
2. Clean your machine and carriage wheels and all tracks with a lint-free cloth.
3. Oil the hook assembly.\*
4. Check encoders are aligned with the tracks.\*
5. Use a compatible new needle, and install it correctly.\*
6. Confirm cables are plugged in, out of the way, and don't constrict the machine's movement.
7. Check the machine's hopping foot height with the height tool.\*
8. Wind and load the bobbin correctly.\*
9. Test your bobbin's tension (see "Bobbin Guide" on reverse side). Adjust if needed.
10. Set the bobbin estimator.\*
11. Use the "Thread Guide" above to thread your machine.
12. Measure and record your quilt's length and width for later reference.
13. Load your quilt onto your frame according to your frame manual's instructions.
14. Set the height of your take-up rail to about a finger's width from the machine bed.
15. Set your tension using scrap materials off to the side of your quilt.\*
16. Set the boundaries for the edge warning.\*
17. Pull up your bottom thread tails as you work (see manual instructions on "tying off").
18. Tack or baste down your quilt (see frame instructions).

\*See machine manual for details.

# Needle Information

**Needle Style:** DPx5 MR, 134 MR, **Bobbin Type:** M-Class  
1955 MR

Use a straight needle.

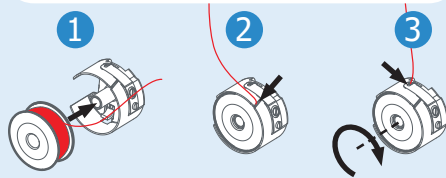


**Size:** **Thread Size and Type:**

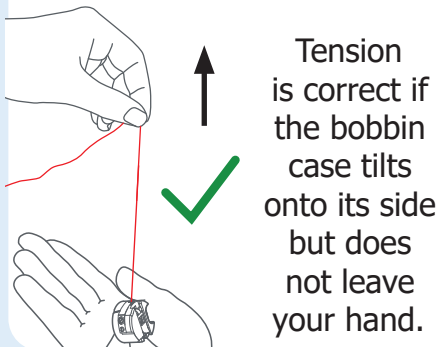
14/90	mono-filament, 100 wt. silk, 60 wt. polyester
16/100	mono-filament, 60 wt., 50 wt. polyester or cotton thread
18/110	40 wt. cotton and polyester, 30 wt. cottons and polyester
20/125	any thread 30 wt. or heavier

# Bobbin Guide

Place the bobbin in the bobbin case so that when you pull the thread, the bobbin rotates clockwise.

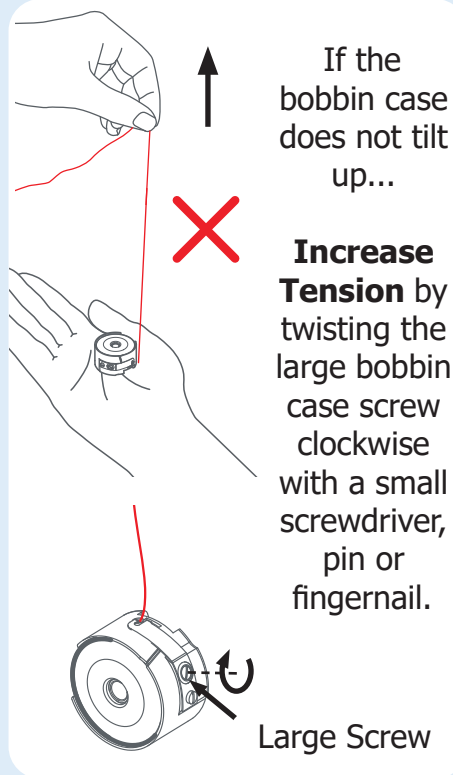


**Tension Test:** Hold the bobbin case in your hand and pull the thread up.



Tension is correct if the bobbin case tilts onto its side but does not leave your hand.

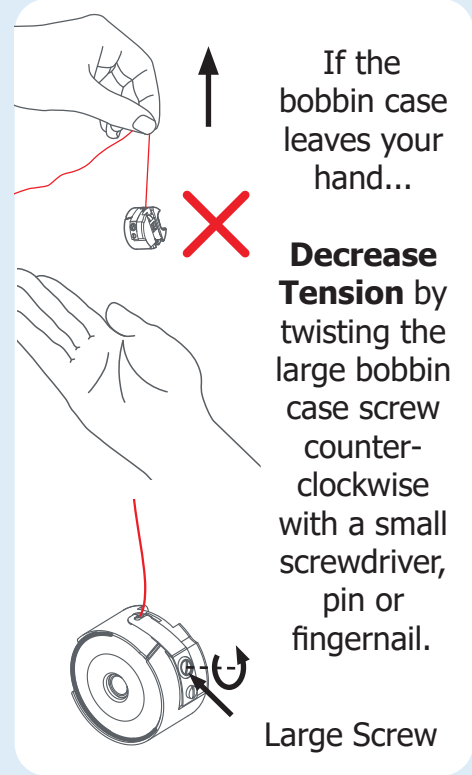
Set the bobbin tension first, and then adjust the top thread tension.



If the bobbin case does not tilt up...

**Increase Tension** by twisting the large bobbin case screw clockwise with a small screwdriver, pin or fingernail.

Large Screw



If the bobbin case leaves your hand...

**Decrease Tension** by twisting the large bobbin case screw counter-clockwise with a small screwdriver, pin or fingernail.

Large Screw

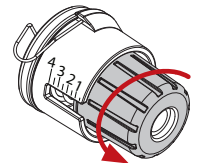
# Top Thread Tension

Set the bobbin tension first (see above).

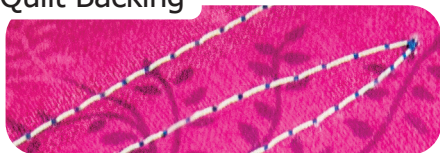
Quilt Top



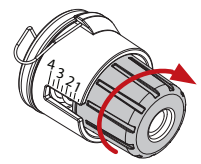
If the bobbin thread (shown here in white) is pulled through the top layer of fabric, decrease top thread tension.



Quilt Backing



If the top thread (shown here in blue) is pulled through to quilt backing, increase tension.



Quilt Top

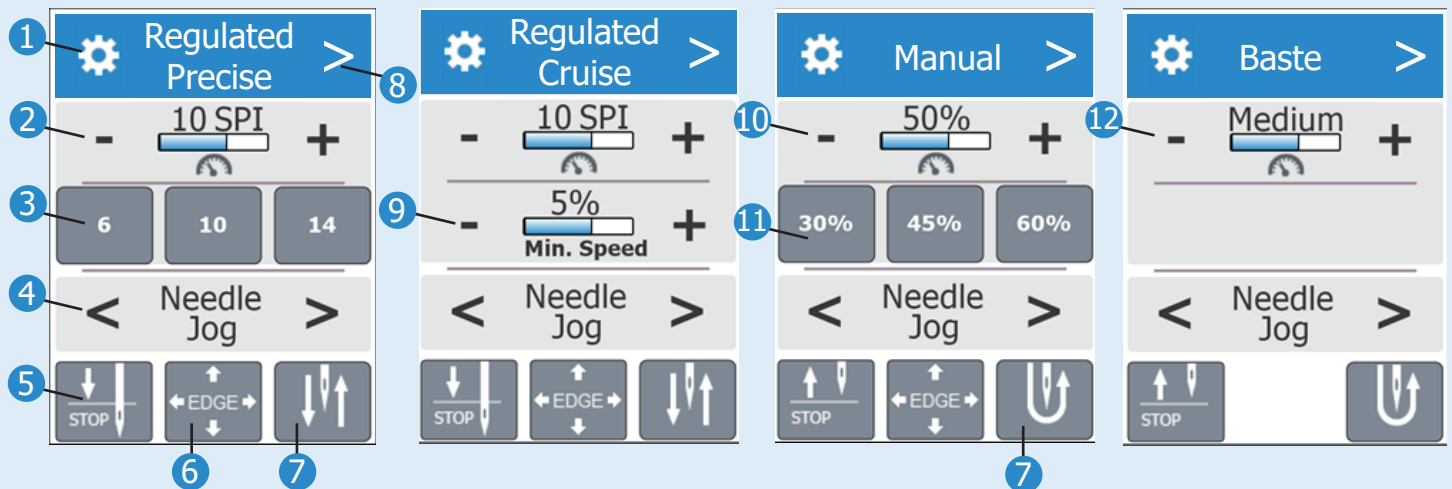


**Correct thread tension**

The top thread is not pulled to the quilt backing, and the bobbin thread is not pulled up to the quilt top.



# ○ Quilting Screens



## 1 Tools Menu

## 2 Stitch Length

Displayed in Stitches Per Inch (SPI) or Centimeter (SPC) (see Settings to set the unit measurement). Press [-] to decrease SPI/SPC and [+] to increase SPI/SPC.

## 3 SPI/SPC Presets

Tap preset button to set stitch length to the number on the preset. Press and hold preset to change preset number to the current stitch length.

## 4 Jog Needle

Press [<] or [>] to move the needle incrementally.

## 5 Needle Stop Indicator

Shows if the needle will stop sewing in the up or down position. Tap to switch the stop position.



[Up]



[Down]

## 6 Edge Warning

Press to access the edge warning screen to set boundaries. When boundaries are active, icon displays green.



Boundaries Inactive



Boundaries Active

## 7 Stitch Button

Pressing this button to create a single stitch, or toggle the needle up or down. Choose which in Settings.



[Single Stitch]



[Needle Up/Down]

## 8 Sewing Mode

Press [>] to switch to cycle through Precise, Cruise, Manual, and Baste quilting modes.

## 9 Minimum Speed

Shown as a percentage of the total machine motor speed, ranging from 5% to 25%. Press [-] to decrease stitching speed and [+] to increase stitching speed.

## 10 Manual Speed

Speed of stitching. Displayed as a percentage of the highest speed. Press [-] to decrease speed and [+] to increase speed.

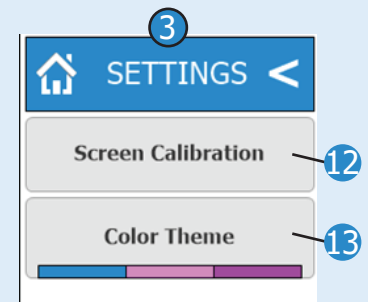
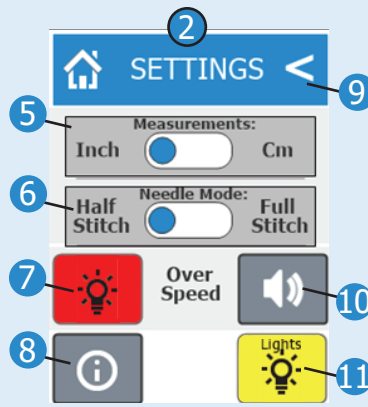
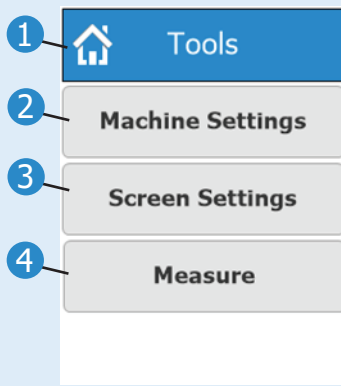
## 11 Manual Speed Presets

Tap preset button to set stitch speed to the number on the preset. Press and hold preset to change preset number to the current stitch length.

## 12 Baste Stitch Length

Press [-] to decrease stitch length and [+] to increase stitch length.

# Menus & Settings



## 1 Return to Sewing

## 2 Machine Setting

## 3 Screen Settings

## 4 Measure Tool

Use your quilting machine to take measurements on your quilt.

## 5 Measurements

Change stitch length units from SPI to SPC on the Quilting Mode screens.

## 6 Needle Mode

Choose to set the stitch button on the quilting screens to single stitch or needle up/down.



[Single Stitch]



[Needle Up/Down]

## 7 Overspeed Light

Tap to enable or disable the red overspeed warning light.

## 8 System Info

Access firmware versions, run time, and stitch counter.

## 9 Back

Go to the previous menu.

## 10 Overspeed Sound

Tap to enable or disable the red overspeed warning sound.

## 11 Needle Area Light

Tap to turn light on or off.

## 12 Screen Calibration

Use if screen buttons aren't responding correctly when pressed.

## 13 Color Theme

Choose menu color.

# Lights & Alarms

**Red Light (Needle Area)** The needle area may light up in red if:

- Machine is being moved too quickly for stitch regulation. This light can be disabled in the Settings menu (Overspeed Light).
- The machine is approaching or has passed over the set quilt boundaries. This can be disabled in the Edge Warning menu.

## Alarm (Constant Tone)

Machine is being moved too quickly for regulated stitching. Slow down machine movements to avoid triggering alarm. Alarm can be disabled in the Settings menu (Overspeed Sound).

## Alarm (Beeping)

Machine approaching or has passed over the boundaries of the quilt. Boundaries must first be established in the Edge Warning tool. This alarm can be disabled in the Edge Warning menu.