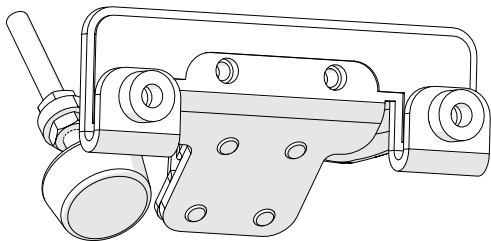


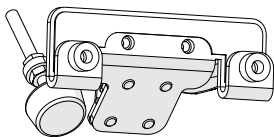
Cutie™ *Breeze*

Channel Locks Instruction Manual



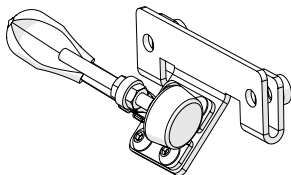
Included Parts & Tools

Bottom Carriage Channel Lock



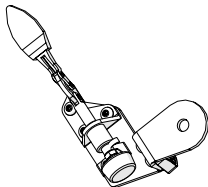
QTT-01-18168

Top Plate Channel Lock



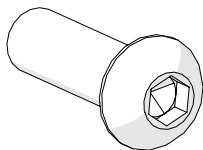
QTT-01-18161

Dual Wheel Channel Lock



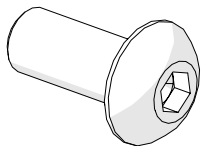
ACC-09-13057

SBHCS M6 x 20 mm



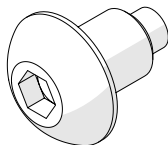
HDW-03-10088

SBHCS M5 x 12 mm (x2)



HDW-03-11387

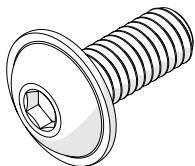
Plastic Tipped SBHCS M5 x 8 mm (x2)



HDW-03-18423

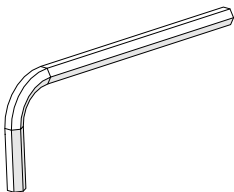
Included Parts & Tools (continued)

Flanged SBHCS M4 x 10 mm (x2)



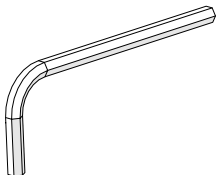
HDW-03-18390

Allen Wrench 4 mm



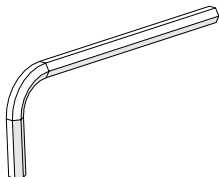
HDW-03-10167

Allen Wrench 3 mm



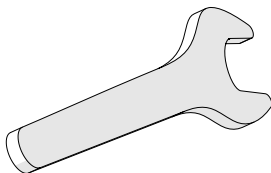
HDW-03-10166

Allen Wrench 2.5 mm



HDW-03-10165

Open-End Wrench 7 mm



HDW-03-10168

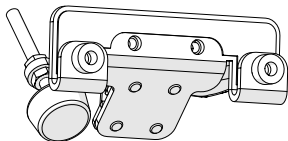
IMPORTANT:

Pay attention to the differences between the channel locks and the screws in this product to make sure you use the correct ones in the correct places.

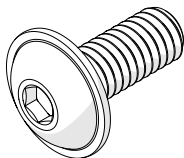
Task 1 - Install Bottom Channel Lock

Parts & Tools Needed

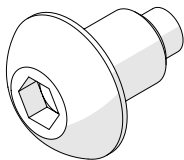
Bottom Channel Lock



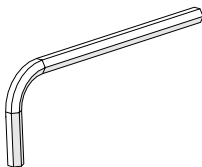
Flanged SBHCS
M4 x 10 mm (x2)



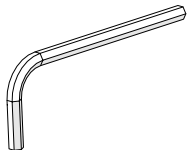
Plastic Tipped SBHCS
M5 x 8 mm (x2)



Allen Wrench 3 mm



Allen Wrench 2.5 mm



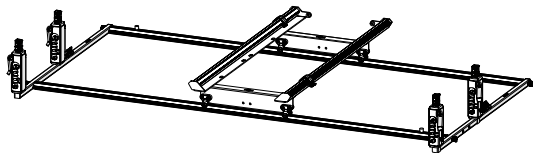
Instructions

The bottom channel lock holds the bottom carriage in place on the frame. Follow these steps to install the bottom channel lock:

Task 1 - Install Bottom Channel Lock (cont)

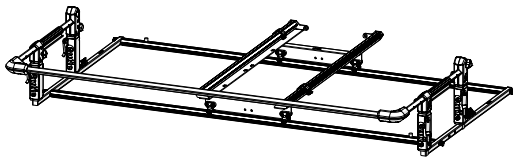
1 Do one of the following:

- a If you are installing the channel lock as you set up your frame, complete this task after you set up the tracks, but before you place anything on the bottom carriage.



**Start Point
If Setting
Up Frame
for 1st Time**

- b If you are installing the channel lock *after* you set up your frame, then remove the take-up rail and take your machine (and top plate, if applicable) off the bottom carriage.

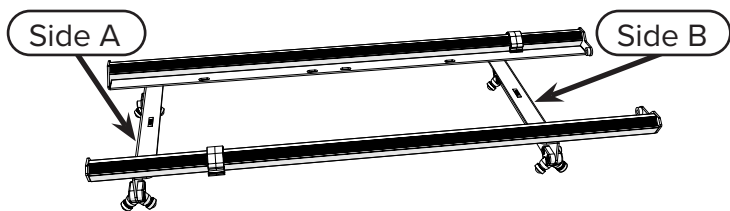


**Start Point
If Adding to
Assembled
Frame**

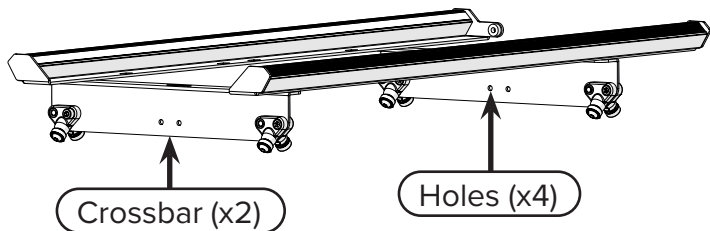
Note: Depending on the way you oriented your bottom carriage (as instructed in the Cutie Breeze manual), the images in this task might look different from your setup. The steps are still the same.

Task 1 - Install Bottom Channel Lock (cont)

- 2 Make sure you know which side of the bottom carriage is the front. Depending on how you are using your frame, you might have **Side A** or **Side B** as the front. Follow the instructions in the Cutie Breeze manual about which orientation to use in your situation.

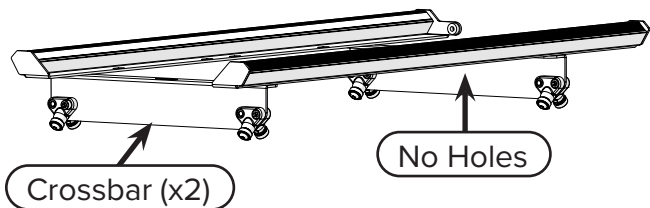


- 3 Examine your bottom carriage, and determine which of the following statements matches your bottom carriage:
- My bottom carriage has two **holes** in each **crossbar**. Continue to step 4.

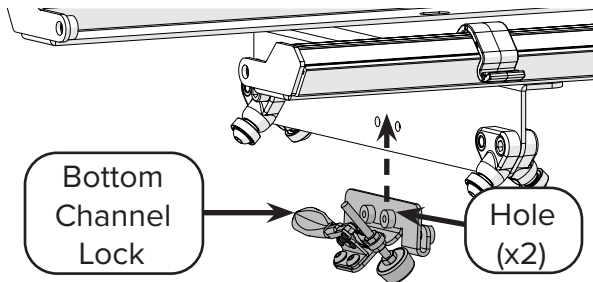


Task 1 - Install Bottom Channel Lock (cont)

- My bottom carriage has **no holes** in the **crossbars**. Skip to “Installing the Channel Lock Without Holes” on page 9.



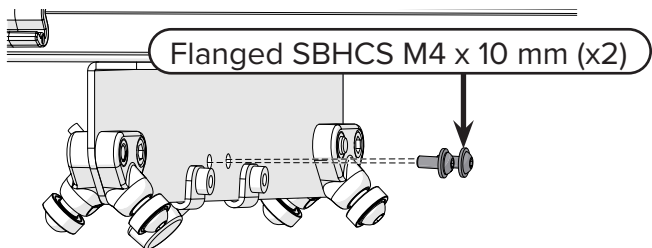
- 4 Slide the **bottom channel lock** up onto the crossbar, Side A or B (whichever is the front for your setup). Line up the **holes** in the channel lock with the holes in the bottom carriage.



Note: Pay attention to the shape of the channel lock. Make sure you are attaching the bottom channel lock, which has four total holes.

Task 1 - Install Bottom Channel Lock (cont)

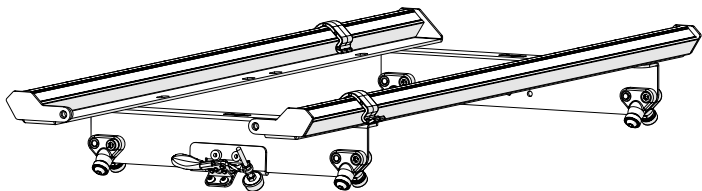
- 5 Use the 2.5 mm Allen wrench and two **flanged M4 x 10 mm SBHCS** to attach the channel lock to the crossbar. **Tip:** Attach both sides of the channel lock before you fully tighten the screws.



- 6 Use the 3 mm Allen wrench & two plastic tipped **M5 x 8 mm SBHCS** to secure the clamps.



- 7 **Task Result:** The channel lock is installed on the bottom carriage.



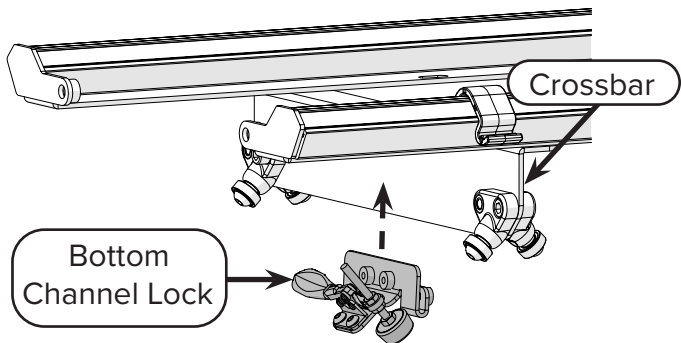
Task 1 - Install Bottom Channel Lock (cont)

Installing the Channel Lock Without Holes

If your bottom carriage doesn't have holes in the crossbar, then you are going to install the bottom channel lock using only the two plastic tipped M5 x 8 mm SBHCS.

Take the following steps:

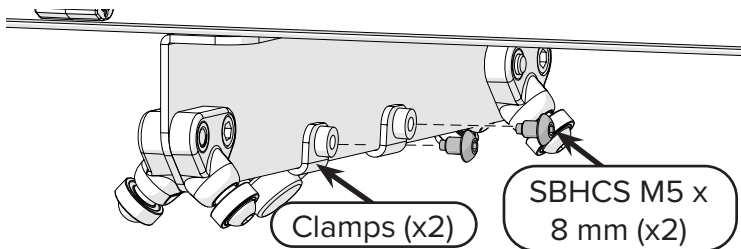
- 1 Slide the **bottom channel lock** up onto the middle of the **crossbar**, Side A or B (whichever is the front for your setup).



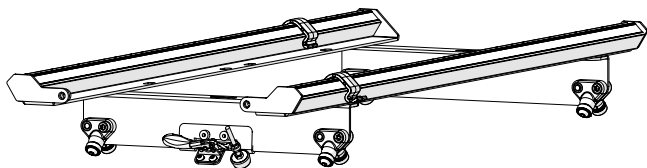
Note: Pay attention to the shape of the channel lock. Make sure you are attaching the bottom channel lock, which has four total holes.

Task 1 - Install Bottom Channel Lock (cont)

- 2 Use the 3 mm Allen wrench to tighten two plastic tipped **M5 x 8 mm SBHCS** in the back of the **clamps** until the channel lock is secured to the crossbar.



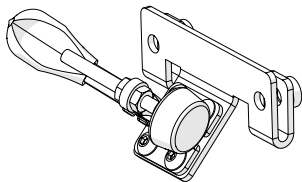
- 3 **Task Result:** The channel lock is installed on the bottom carriage.



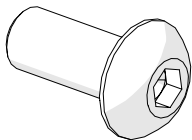
Task 2 - Install Top Plate Channel Lock

Parts & Tools Needed

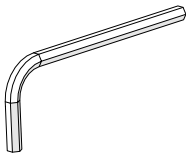
Top Plate Channel Lock



SBHCS M5 x 12 mm (x2)



Allen Wrench 3 mm



Note: If you're using a wheeled quilting machine, then skip to task 3.

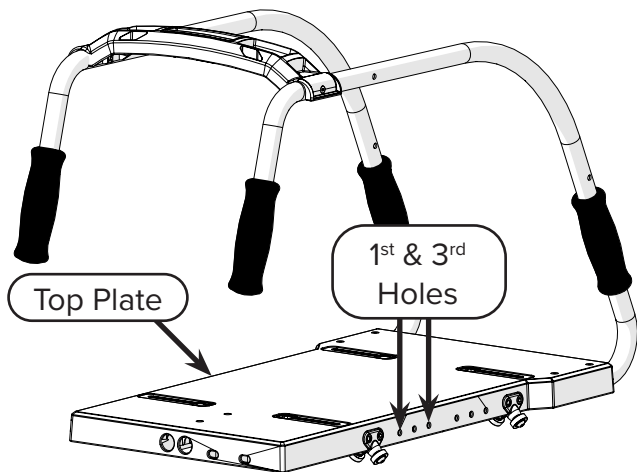
Instructions

The channel lock on the top plate helps you stitch straight lines by holding the top plate in place on the bottom carriage.

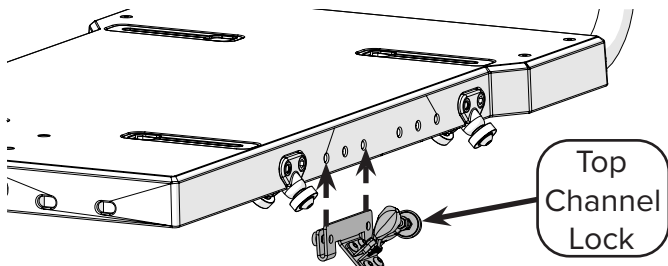
If you are using the Cutie Breeze top plate with your wheel-less machine, then take the following steps to install the top channel lock:

Task 2 - Install Top Plate Channel Lock (cont)

- 1 On the right side of the **top plate**, locate the **first and third holes** in the line of six holes.

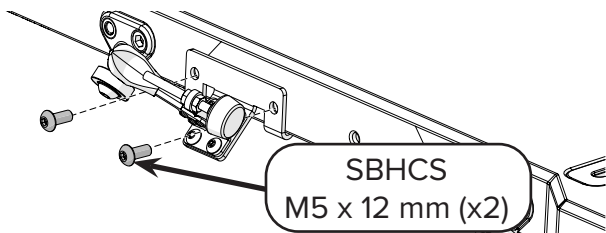


- 2 Slide the **top channel lock** up onto the top plate, and line up the holes on the lock with the first and third holes on the top plate.

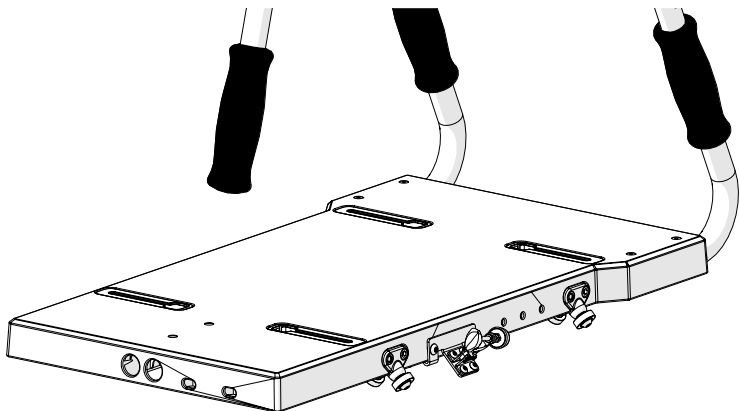


Task 2 - Install Top Plate Channel Lock (cont)

- 3 Use the 3 mm Allen wrench to attach two **M5 x 12 mm SBHCS** to the channel lock. **Tip:** Don't fully tighten the screws until you have made sure both sides of the channel lock are lined up with the holes.



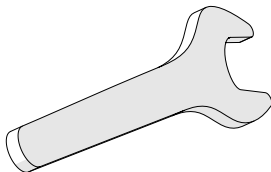
- 4 **Task Result:** The top channel lock is installed on the top plate.



Task 3 - Set Locks to Correct Height

Parts & Tools Needed

Open-End
Wrench 7 mm

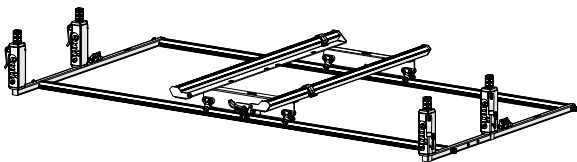


Instructions

The channel locks must press firmly against the tracks to hold the bottom carriage or top plate in place. Do the following to set the channel locks to the correct height.

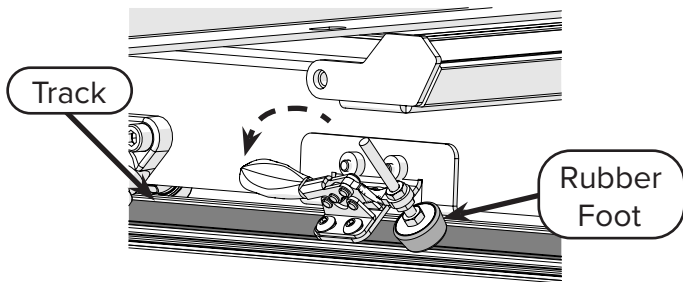
Note: The images below only show the bottom carriage channel lock, but if you're using the top plate channel lock, you should check it as well.

- 1 Make sure the bottom carriage (or top plate) is positioned on the frame correctly.

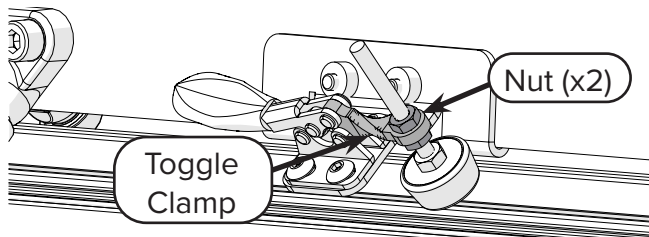


Task 3 - Set Locks to Correct Height (cont)

- 2 Close the channel lock handle and test it out. The **rubber foot** needs to press firmly against the **track** and prevent the carriage (or top plate) from moving. If the channel lock presses firmly to the track, then skip to step 6. Otherwise, continue to step 3.

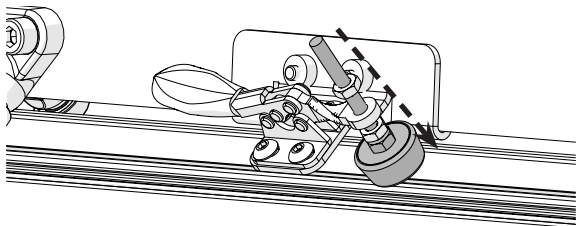


- 3 If the channel lock doesn't fully reach the track, or if its grip on the track seems loose, then use the 7 mm open-end wrench to loosen the two **nuts** on both sides of the **toggle clamp** until there's a gap between the nuts and the clamp.

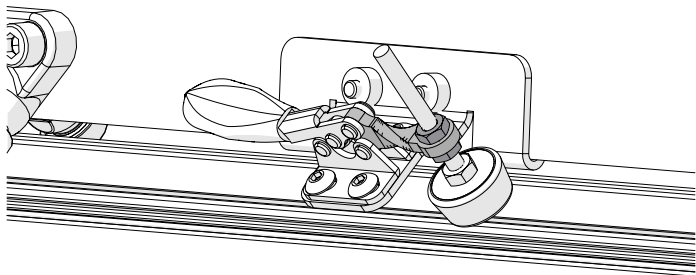


Task 3 - Set Locks to Correct Height (cont)

- 4 Once the foot can slide through the toggle clamp, shift it down slightly until the foot presses firmly to the track.



- 5 Use the wrench to tighten the nuts next to the toggle clamp to again hold the foot in place.

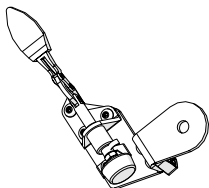


- 6 **Task Result:** The channel lock is set to the correct height (on the bottom carriage or the top plate).

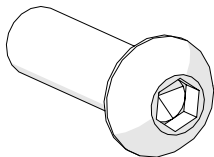
Task 4 - Install Machine Channel Lock

Parts & Tools Needed

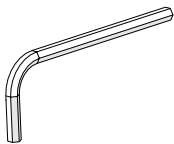
Dual Wheel Channel Lock



SBHCS M6 x 20 mm



Allen Wrench 4 mm



Note: If you're using a wheel-less machine on the top plate, then skip this task.

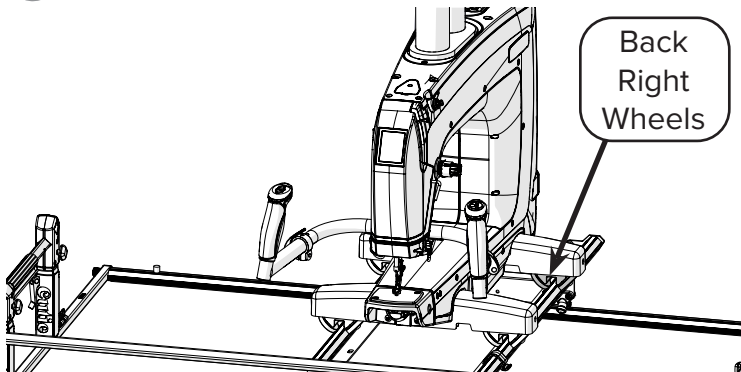
Instructions

The channel lock on the machine helps you stitch straight lines by holding the machine in place on the bottom carriage. If you are using a machine with wheels on the Cutie Breeze, then take the following steps to install the machine channel lock.

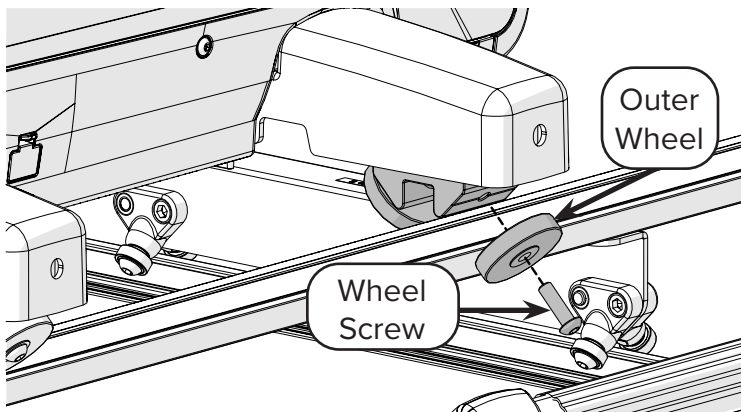
Note: Your machine might look different from the example images, but the process is still the same.

Task 4 - Install Machine Channel Lock (cont)

- 1 Locate the machine's **back right wheels**.

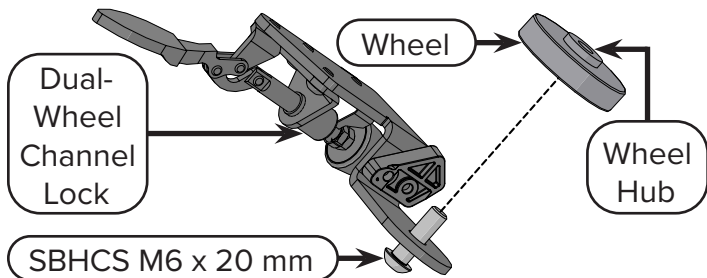


- 2 Use the 4 mm Allen wrench to remove the **outer wheel** and the **wheel screw**. The wheel screw is not needed again.

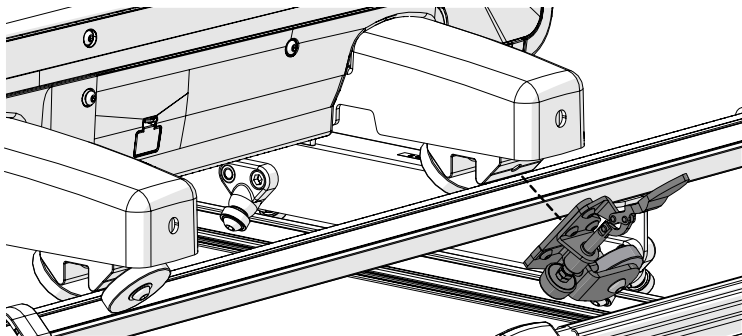


Task 4 - Install Machine Channel Lock (cont)

- 3 Place the **dual-wheel channel lock** onto the **M6 x 20 mm SBHCS**. Next, place the **wheel** onto the screw, with the **wheel hub** facing away from the channel lock.

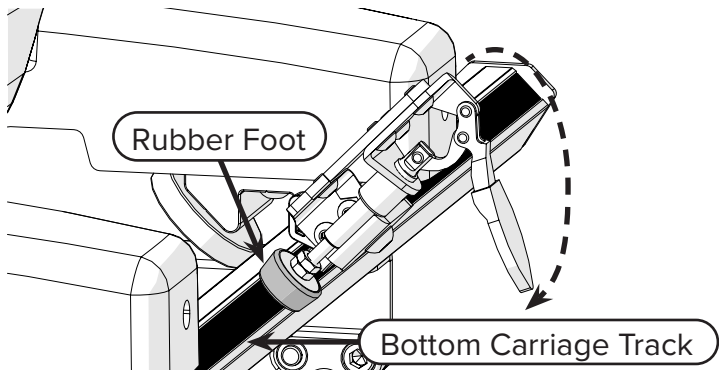


- 4 Use the Allen wrench to screw the channel lock and wheel onto the machine so the channel lock body is toward the front of the machine.

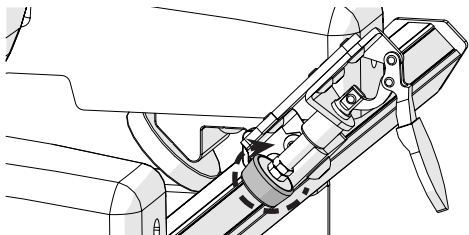


Task 4 - Install Machine Channel Lock (cont)

- 5 Close the channel lock handle and test it out. The **rubber foot** needs to press firmly against the **bottom carriage track** and prevent the machine from moving. If the channel lock presses firmly to the track, then skip to step 7. Otherwise, continue to step 6.

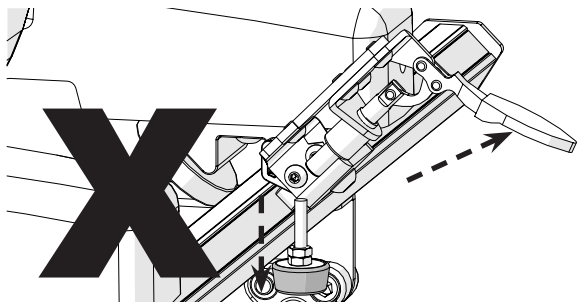


- 6 If the channel lock doesn't fully reach the track, or if its grip on the track seems loose, then twist the rubber foot clockwise to extend it.

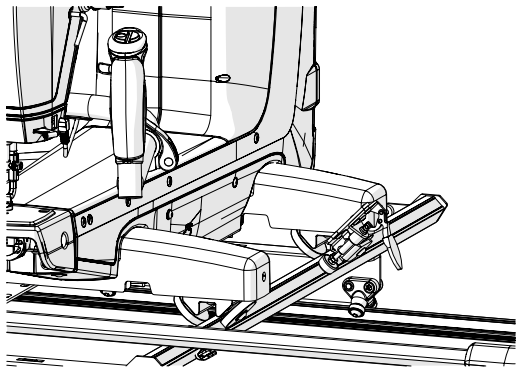


Task 4 - Install Machine Channel Lock (cont)

Note: If you twist the rubber foot too far, the handle will start to open, and eventually the foot will fall out. Reverse the direction you're twisting until the handle is pointing down, but with the foot still pressed firmly on the track.



7 Task Result: The channel lock is installed on the machine and set to the correct height.



Using the Channel Locks

Instructions

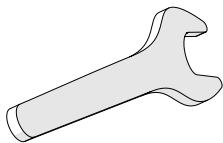
The channel locks restrict the movement of the bottom carriage and the sewing machine or the top plate so that you can easily stitch a straight line.

- To quilt a straight line across the frame right to left (or left to right), press down on the handle of the top plate or machine channel lock. This action closes the lock and prevents the movement of the top plate or machine. Leave the channel lock on the bottom carriage open by making sure the handle is lifted.
- To quilt a straight line along the frame from front to back (or back to front), close the channel lock on the bottom carriage and leave the channel lock on the machine or top plate open.
- To quilt unrestricted, open both channel locks.

Performing Maintenance on Channel Locks

Parts & Tools Needed

**Open-End
Wrench 7 mm**

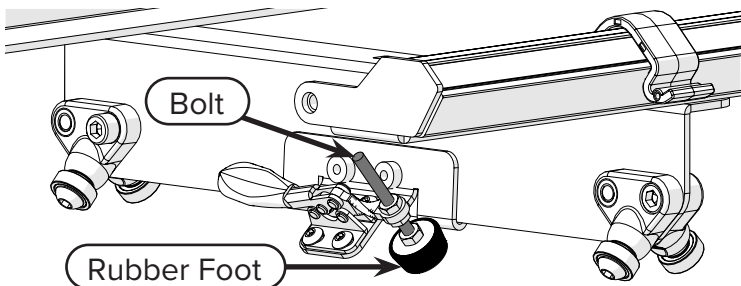


Using the Channel Locks (cont)

Over time, the nuts that hold the rubber feet can start to loosen. Therefore, take the following steps every other time you use your machine.

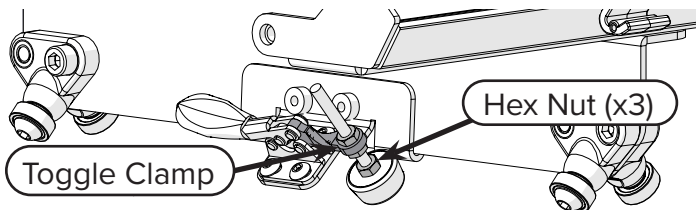
Note: The images below only show the bottom carriage channel lock, but you should check the other channel lock you're using, either the top plate or machine channel lock.

- 1 Examine the **rubber foot** and the **bolt** on both channel locks. If the feet don't wiggle, the channel locks are ready to use. Otherwise, continue to step 2.



- 2 If either of the feet wiggle, then use the 7 mm open-end wrench to tighten the bottom **hex nut** against the rubber foot. Also, use the wrench to tighten the other hex nuts that hold the **toggle clamp** to prevent the bolt from wiggling.

Using the Channel Locks (cont)



- 3 **Task Result:** The bolts and feet on the channel locks are prevented from wiggling.

Fixing Sticky Channel Locks

Parts & Tools Needed

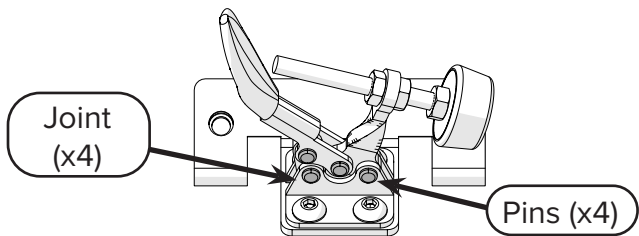
**Machine Oil in Bottle
(not included)**



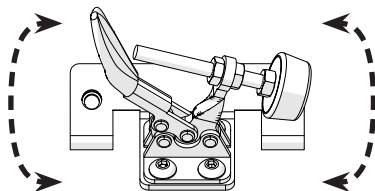
If you're struggling to open or close the channel locks, then oil the hinges. The oil helps the hinges to work more smoothly. Do the following:

- 1 Put a few drops of machine oil onto the **joints** of the channel locks. **Note:** Try to get the oil on the **pins**, under the other metal parts.

Using the Channel Locks (cont)



- 2 Open and close the channel lock a few times to help spread the oil onto the hinges.



- 3 **Task Result:** The channel locks are oiled and are easier to open and close.

Grace

COMPANY

www.graceframe.com

1-801-485-6688

Copyright © 2024 Grace Company. All rights reserved. Grace Company reserves the right to make improvements and changes to the product described in this publication at any time and without notice, and may revise this publication occasionally without notice.

Grace Company provides this publication “as-is.” While every attempt at accuracy and clarity has been made in the preparation of this manual and its representation of the product, the publisher and author assume no responsibility for errors, omissions, or any damages as a result of said errors or omissions.

All brand names, publishing activities and trademarks used in this publication are the trademarks, service marks, or trade names of their respective holders.

First Published: 4/24/24 Last Updated: 4/24/24