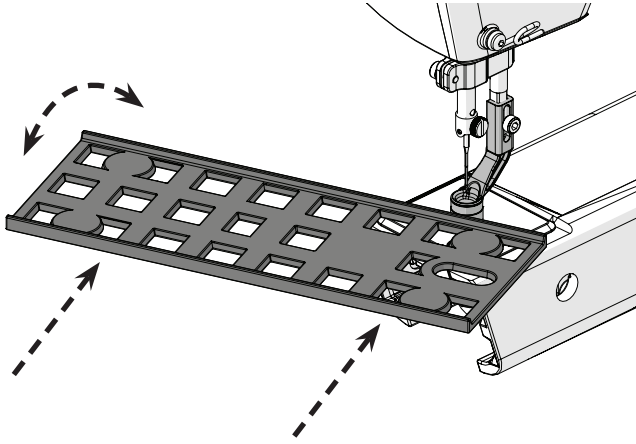


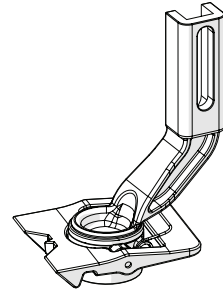
Using the Rolling Foot

- 1 Press the ruler against the rolling foot. Rotate and slide the ruler as desired.

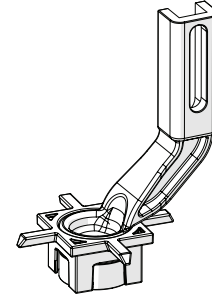


- 2 Use the rolling foot to move the machine along the ruler without any friction.

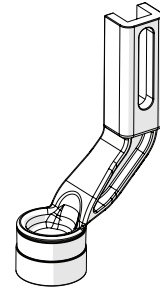
Parts and Tools Included



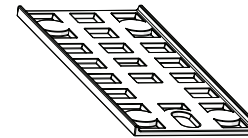
TrueTrack Foot
ACC-09-15257



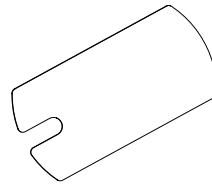
Precision Foot
ACC-09-15258



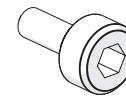
Rolling Foot
ACC-09-15255



Ruler 3" x 8"
ACC-05-15299



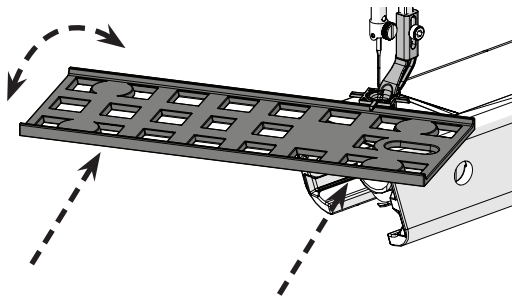
Hopping Foot Height Tool
SMP-04-12171



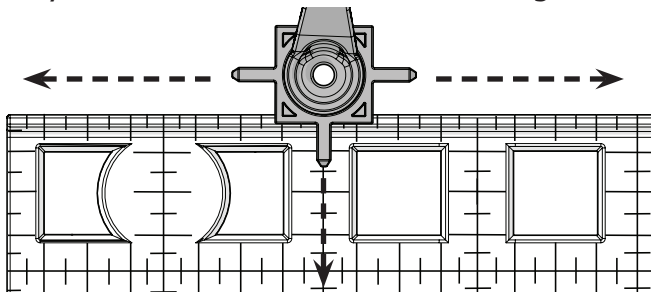
Hopping Foot Screw
HDW-03-10966

Using the Precision Foot

- 1 Press the ruler against the precision foot. Rotate and slide the ruler as desired.

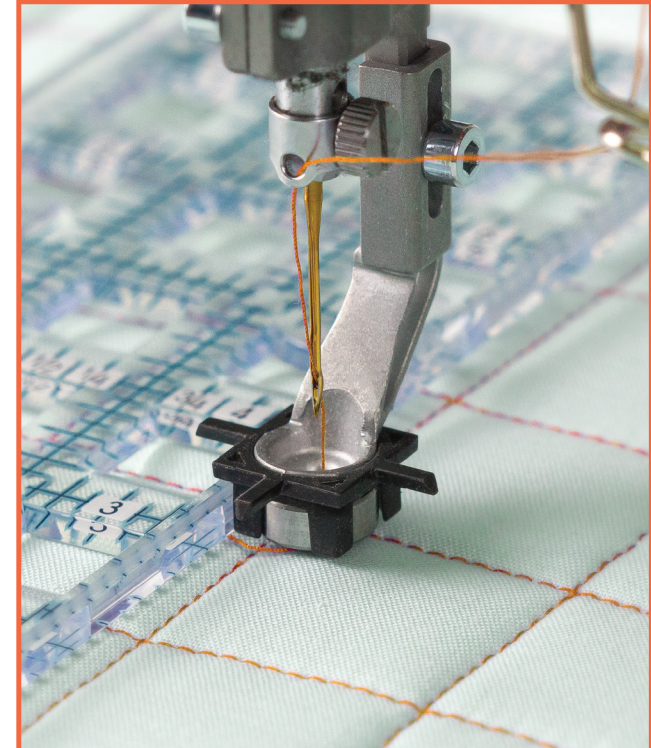


- 2 Use the precision foot pointers to align your stitches with the ruler markings.



QUILT PERFECT RULER FEET KIT

INSTRUCTIONS



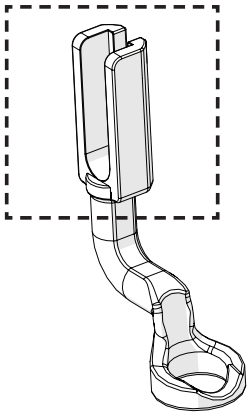
Grace
COMPANY

Copyright 11/5/2021
Version 2.0

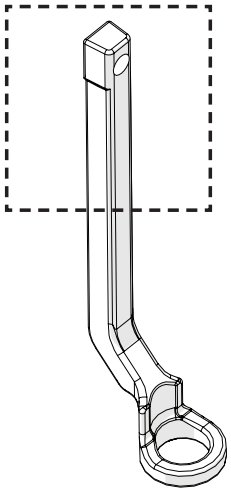
1-800-264-0644



Check the style of hopping foot currently installed on your machine.



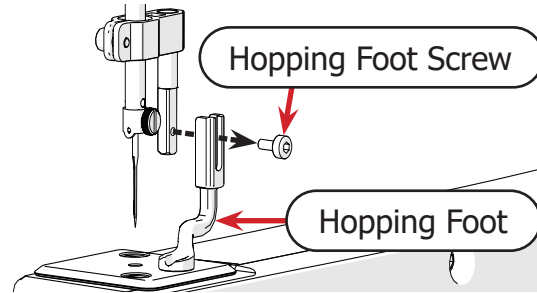
Continue to the installation instructions.



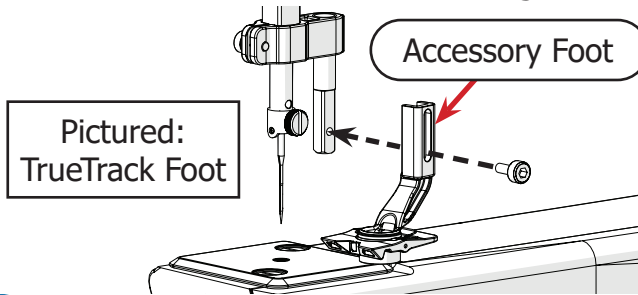
Install the **Standalone Hopping Foot Collar** upgrade. Purchase from www.graceframe.com.

Installing an Accessory Foot

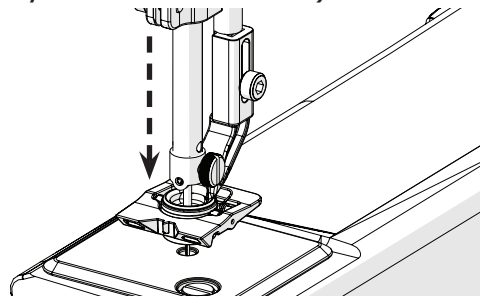
- 1 Remove the **hopping foot screw** and **hopping foot** with a 3 mm Allen wrench.



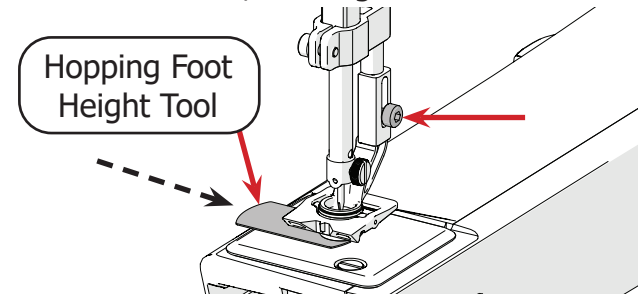
- 2 Attach an **accessory foot** of your choice. Use the same screw, but do not tighten.



- 3 Fully lower the needle. (The accessory foot should stay loose on the collar.)

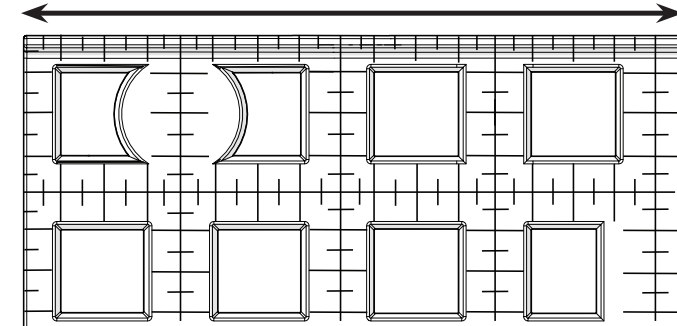


- 4 Slide the **hopping foot height tool** under the foot, then tighten the screw.



Using the Ruler

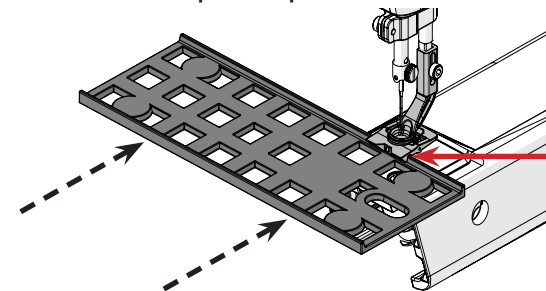
The ruler's straight edge and inch markings allow you to measure and stitch precise lines in any direction. Use the ruler with the accessory foot that best suits your needs.



For best results, pair with the ruler base accessory available at www.graceframe.com.

Using the TrueTrack Foot

- 1 Press the ruler lip into the TrueTrack foot. The ruler will snap into place.



- 2 Rotate and slide the ruler as desired. The ruler should stay attached to the foot.

