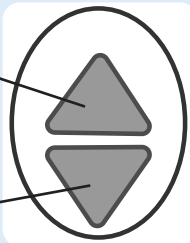


Threading Guide

- 1 Thread Cone
- 2 Thread Mast
- 3 Small Tensioner
- 4 Thread Guide
- 5 Tensioner Check Spring
- 6 Thread Guide
- 7 Take-up Lever
- 8 Bottom Thread Guide
- 9 Needle Bar Eyelet
- 10 Eye of Needle

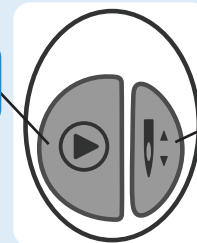
Handlebar Button Controls

Increase



Decrease

Start/Stop
Stitching



Single Stitch
or Needle Up/
Down (see
Settings)

Starting a New Project?

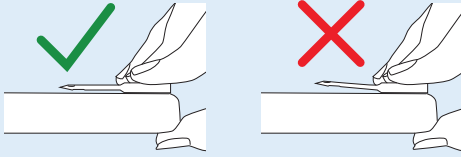
1. Gather fabric, batting, thread, and needles.
2. Clean your machine and carriage wheels and all tracks with a lint-free cloth.
3. Oil the hook assembly.*
4. Use a compatible new needle, and install it correctly.*
5. Confirm cables are plugged in, out of the way, and don't constrict the machine's movement.
6. Check the machine's hopping foot height with the height tool.*
7. Wind and load the bobbin correctly.*
8. Test your bobbin's tension (see "Bobbin Guide" on reverse side). Adjust if needed.
9. Use the "Thread Guide" above to thread your machine.
10. Measure and record your quilt's length and width for later reference.
11. Load your quilt onto your frame according to your frame manual's instructions.
12. Set the height of your take-up rail to about a finger's width from the machine bed.
13. Set your tension using scrap materials off to the side of your quilt.*
14. Pull up your bottom thread tails as you work (see manual instructions on "tying off").
15. Tack or baste down your quilt (see frame instructions).

*See machine manual for details.

Needle Information

Needle Style: DPx5 MR, 134 MR, **Bobbin Type:** M-Class
1955 MR

Use a straight needle.

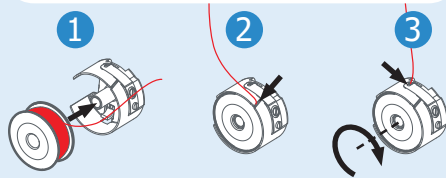


Size: Thread Size and Type:

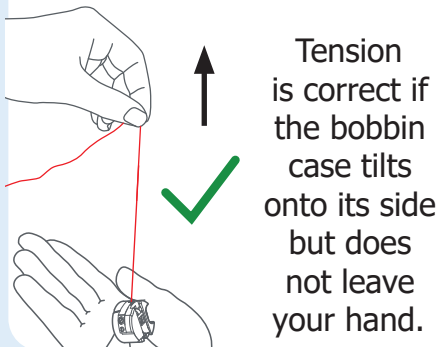
| | |
|--------|---|
| 14/90 | mono-filament, 100 wt. silk, 60 wt. polyester |
| 16/100 | mono-filament, 60 wt., 50 wt. polyester or cotton thread |
| 18/110 | 40 wt. cotton and polyester, 30 wt. cottons and polyester |
| 20/125 | any thread 30 wt. or heavier |

Bobbin Guide

Place the bobbin in the bobbin case so that when you pull the thread, the bobbin rotates clockwise.

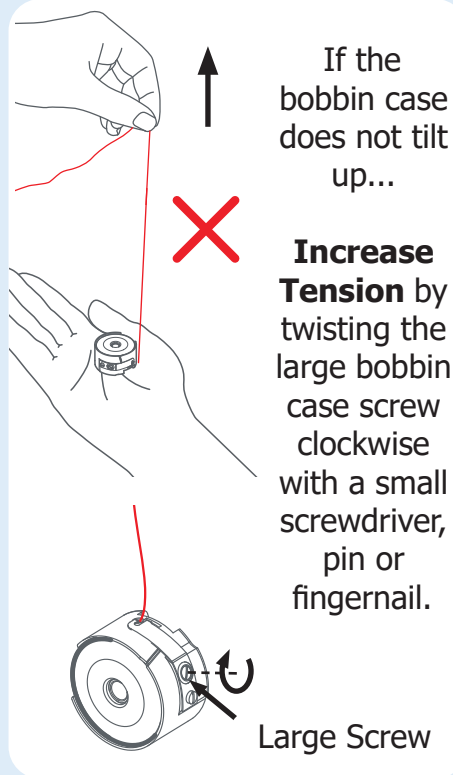


Tension Test: Hold the bobbin case in your hand and pull the thread up.



Tension is correct if the bobbin case tilts onto its side but does not leave your hand.

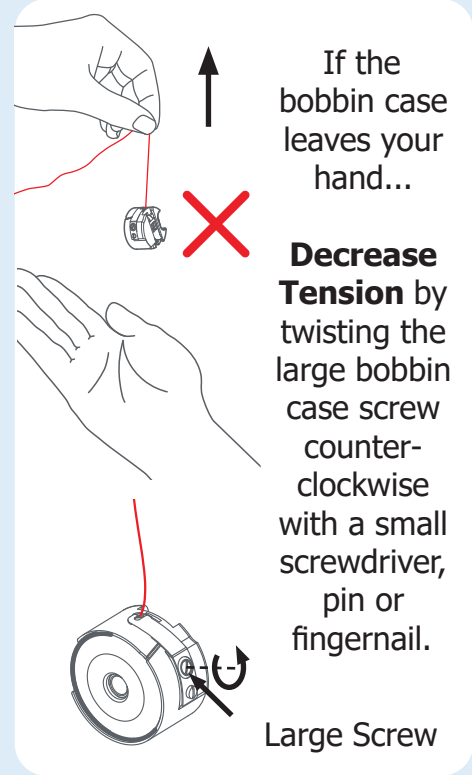
Set the bobbin tension first, and then adjust the top thread tension.



If the bobbin case does not tilt up...

Increase Tension by twisting the large bobbin case screw clockwise with a small screwdriver, pin or fingernail.

Large Screw



If the bobbin case leaves your hand...

Decrease Tension by twisting the large bobbin case screw counter-clockwise with a small screwdriver, pin or fingernail.

Large Screw

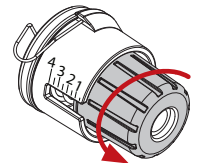
Top Thread Tension

Set the bobbin tension first (see above).

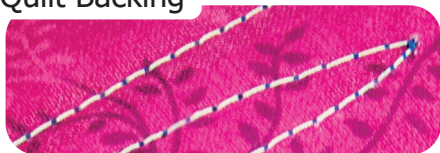
Quilt Top



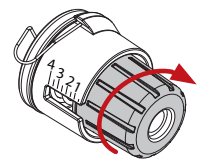
If the bobbin thread (shown here in white) is pulled through the top layer of fabric, decrease top thread tension.



Quilt Backing



If the top thread (shown here in blue) is pulled through to quilt backing, increase tension.



Quilt Top



Correct thread tension

The top thread is not pulled to the quilt backing, and the bobbin thread is not pulled up to the quilt top.

