

Grace Speed Control

The Grace Speed Control is designed to work with Juki sewing machines.

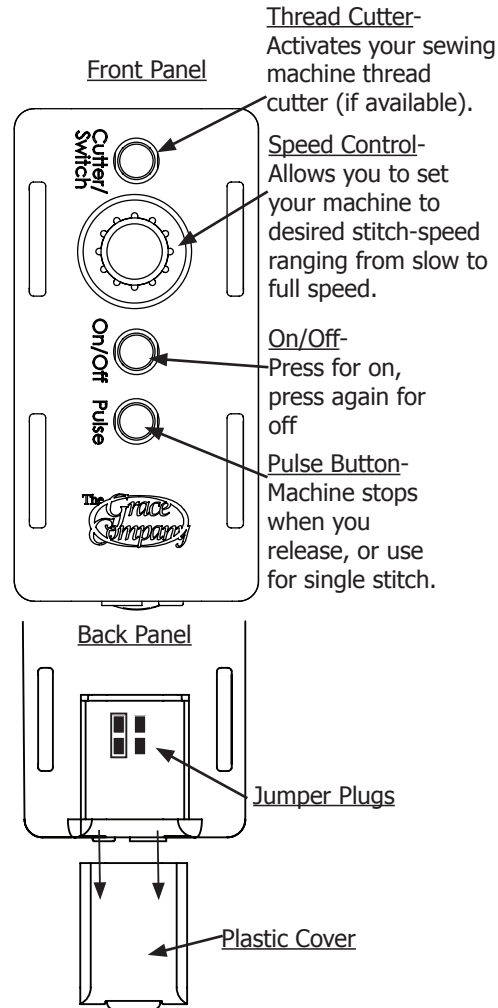
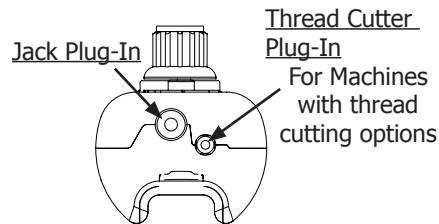
Setting Up Your Speed Control-

SC-1: Open The plastic cover on the back panel.

SC-2: Using Table 1, verify that your jumper plug is in the correct position for your sewing machine.

SC-3: If in wrong position, remove and reposition the jumper plug to match your sewing machines.

SC-4: Reinstall the plastic cover and install your Speed Control.



Trouble Shooting:

Sewing machine does not turn on when speed control on/ of button is pushed in.	<ul style="list-style-type: none"> Verify the Speed Control sewing cable is plugged into the sewing machine foot pedal connector. Verify the sewing machine power switch is in the on position. Verify the sewing machine cord is plugged in correctly. Adjust Speed Control knob to 1/4 turn CW.
Sewing machine does not work correctly with this Speed Control.	Verify your sewing machine is one of the Juki models shown in Table 1. If your sewing machine is a different model please refer to the Grace Company contact information at the bottom of this page.
Sewing machine will not turn on.	refer to Table 1 and verify the jumper plug position is correct.
Power On/Off does not work consistently.	Refer to Table 1 and verify jumper plug position is correct.
Excessive Idle Speed.	Use only the cable that was shipped with the Speed Control. Some cables may fit but may cause the Speed Control to operate incorrectly

Juki Sewing Machine	Jumper Plug Position	Jack Plug-In Adapter
2200 mini, TL2010Q, 2010Q, TL2000, 2000		
TL98Q, TL98QE		

Table 1

After reviewing all troubleshooting steps and your Speed Control still does not work please call Grace Company at 1-800-264-0644. If you are using a different sewing machine please go to the Grace Company web site www.graceframe.com to see if we have a Speed Control compatible with your sewing machine.

(To Speed Control Jack)

(To Sewing Machine)