

Quilter's Evolution

ELITE - FRAME

Accessory Rail

Assembly & Installation

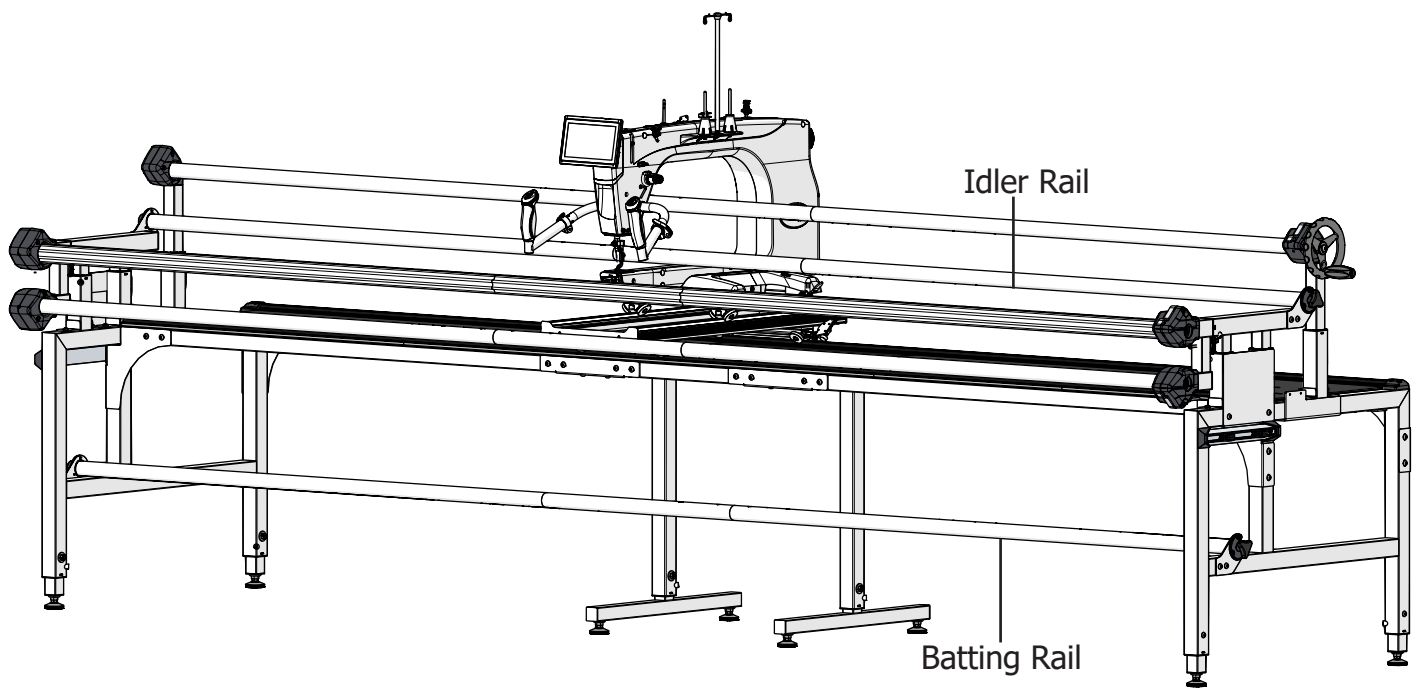
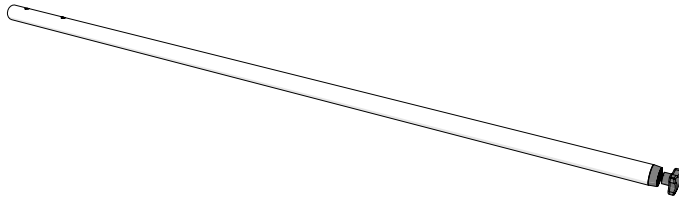


Table of Contents

| | |
|--|-----------|
| Included Parts and Tools | 1 |
| Assembling the Accessory Rail | 2 |
| 8 Foot Rail Instructions | 2 |
| 10 Foot Rail Instructions | 5 |
| 12 Foot Rail Instructions | 8 |
| Installing the Accessory Rail | 13 |
| Idler Rail Instructions..... | 14 |
| Batting Rail Instructions..... | 17 |
| Fabric Installation..... | 19 |
| Idler Setup | 19 |
| Batting Setup..... | 19 |

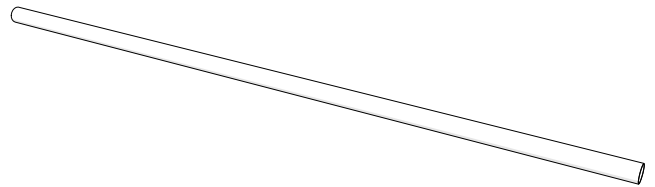
Included Parts and Tools

**Round Accessory
Rail Assembly**



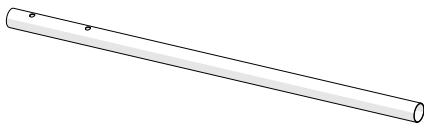
QEF-09-17175

Round Rail - 5 ft



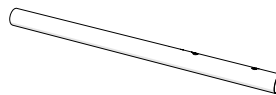
CNT-04-11005

Round Rail - 3 ft



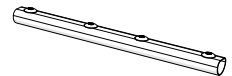
QEF-09-16814

Round Rail - 2 ft



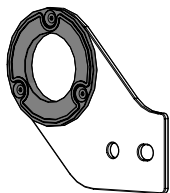
QEF-04-16826

**Rail Coupler
Assembly (x2)**



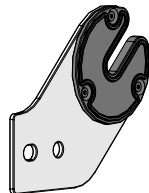
CNT-09-11865

**Metal Bracket
Assembly - Left**



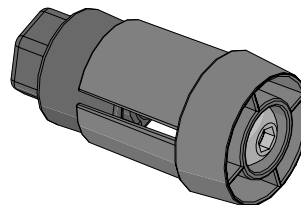
QEF-09-17189

**Metal Bracket
Assembly - Right**



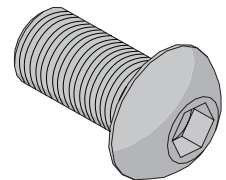
QEF-09-17188

**Accessory Rail
Cap Assembly**



QEF-09-17182

**SBHCS
M8 x 16 mm (x4)**



HDW-03-10951

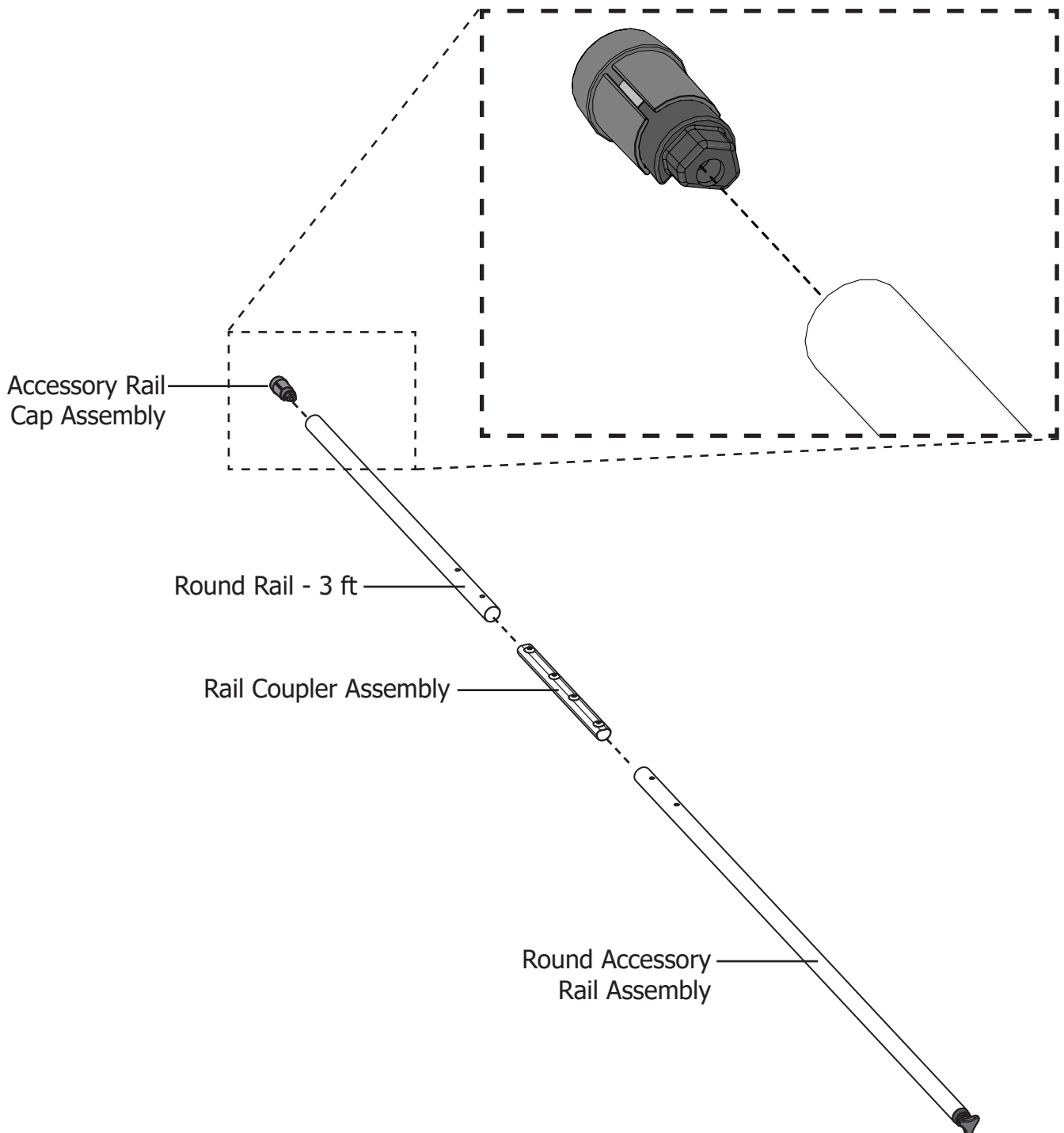
Assembling the Accessory Rail

To assemble your accessory rail, first choose your Evolution Elite configuration from the list below:

- **8 foot:** Continue below.
- **10 foot:** Turn to page 5.
- **12 foot:** Turn to page 8.

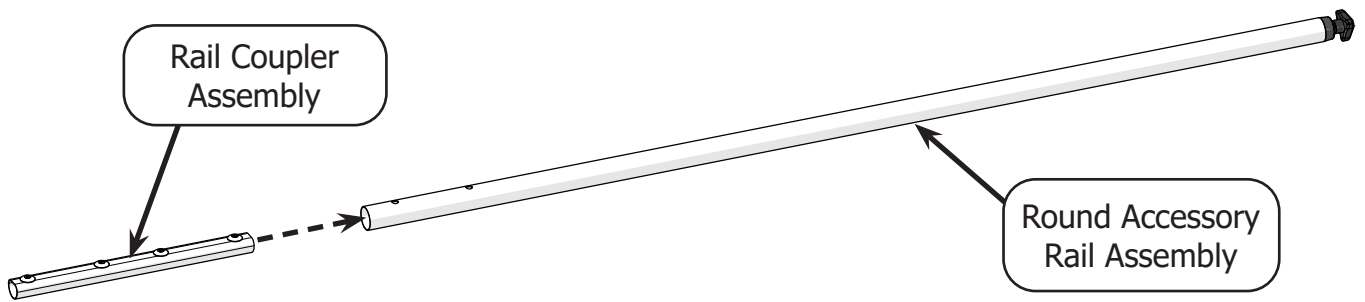
8 Foot Rail Instructions

The 8 foot accessory rail is assembled according to the following diagram:

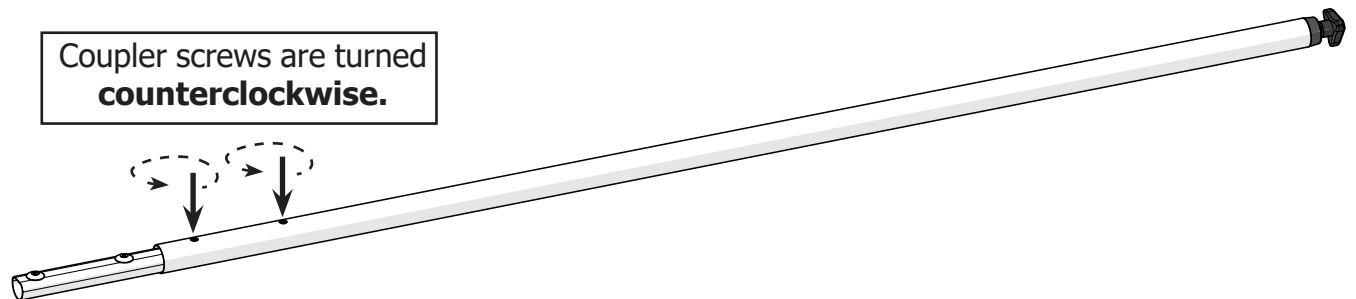


Assembling the 8 Foot Accessory Rail (continued)

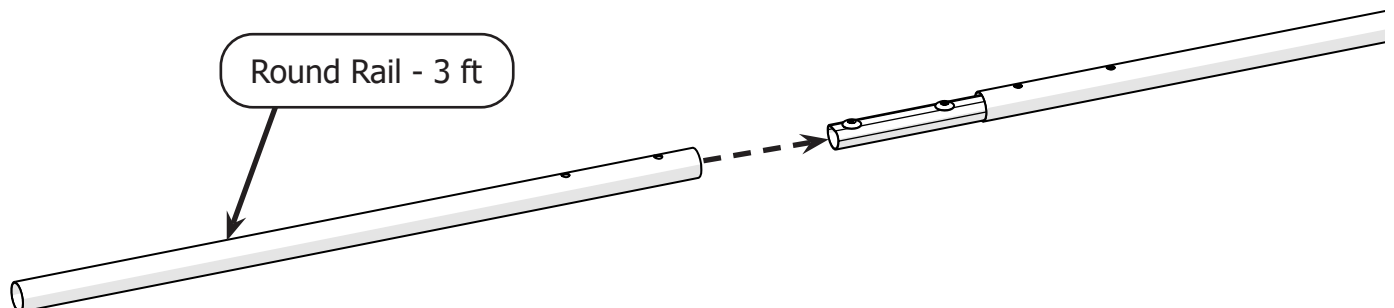
- 1 Slide a **rail coupler assembly** into the open end of the **round accessory rail assembly** until the first two screws in the coupler align with the two holes in the accessory rail.



- 2 With a 4 mm Allen wrench, turn the two aligned **rail coupler screws** counterclockwise until they press firmly against the accessory rail. This prevents the rail coupler assembly from being pulled away from the accessory rail.

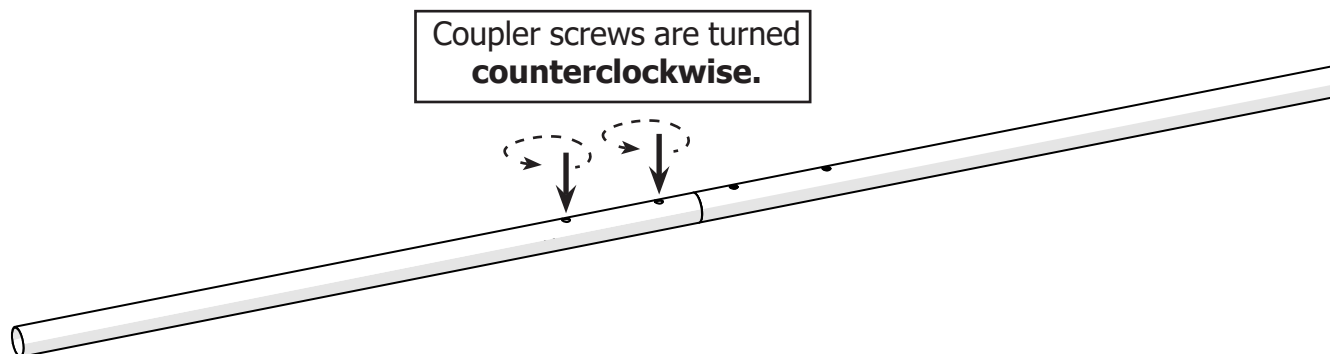


- 3 Slide the **round rail - 3 ft** onto the rail coupler assembly so the screw holes align with the coupler screws.

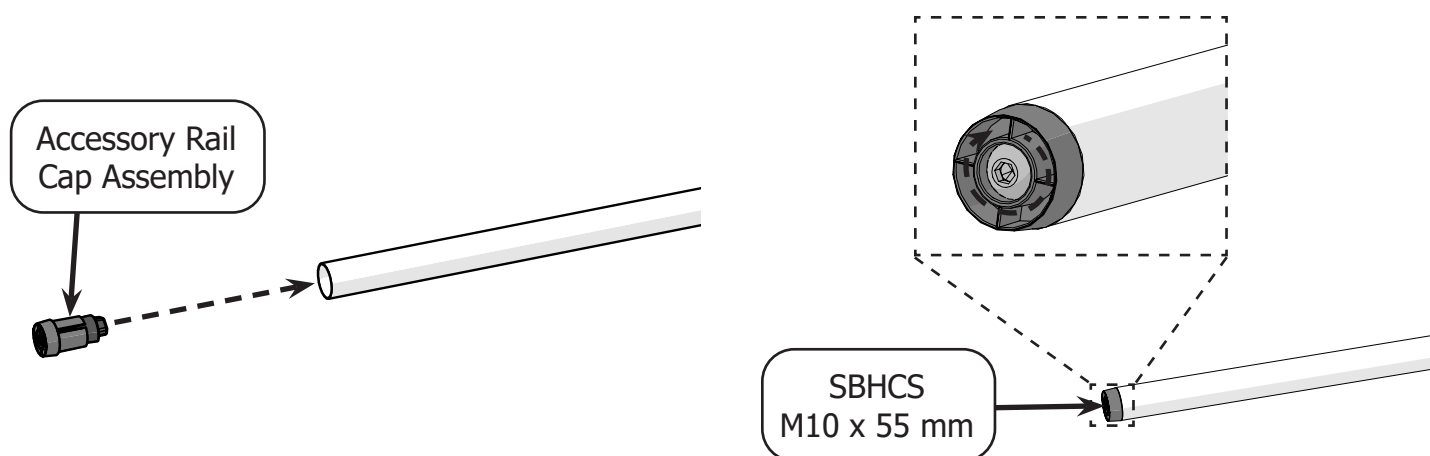


Assembling the 8 Foot Accessory Rail (continued)

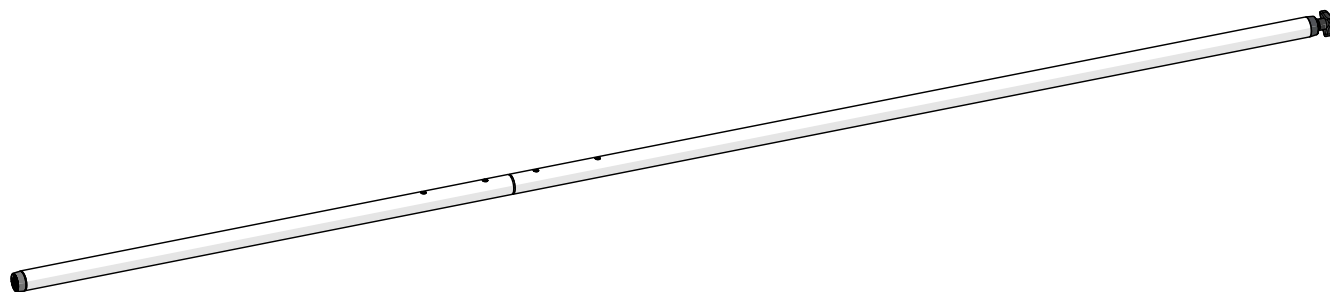
- 4 Rotate the two rail coupler screws counterclockwise with a 4 mm Allen wrench until they press firmly against the 3 foot rail. This prevents the rails from being pulled away from each other.



- 5 Press the **accessory rail cap assembly** into the open end of the 3 foot rail until it is all the way in. Tighten down the **M10 x 55 mm SBHCS** screw with a 6 mm Allen wrench.

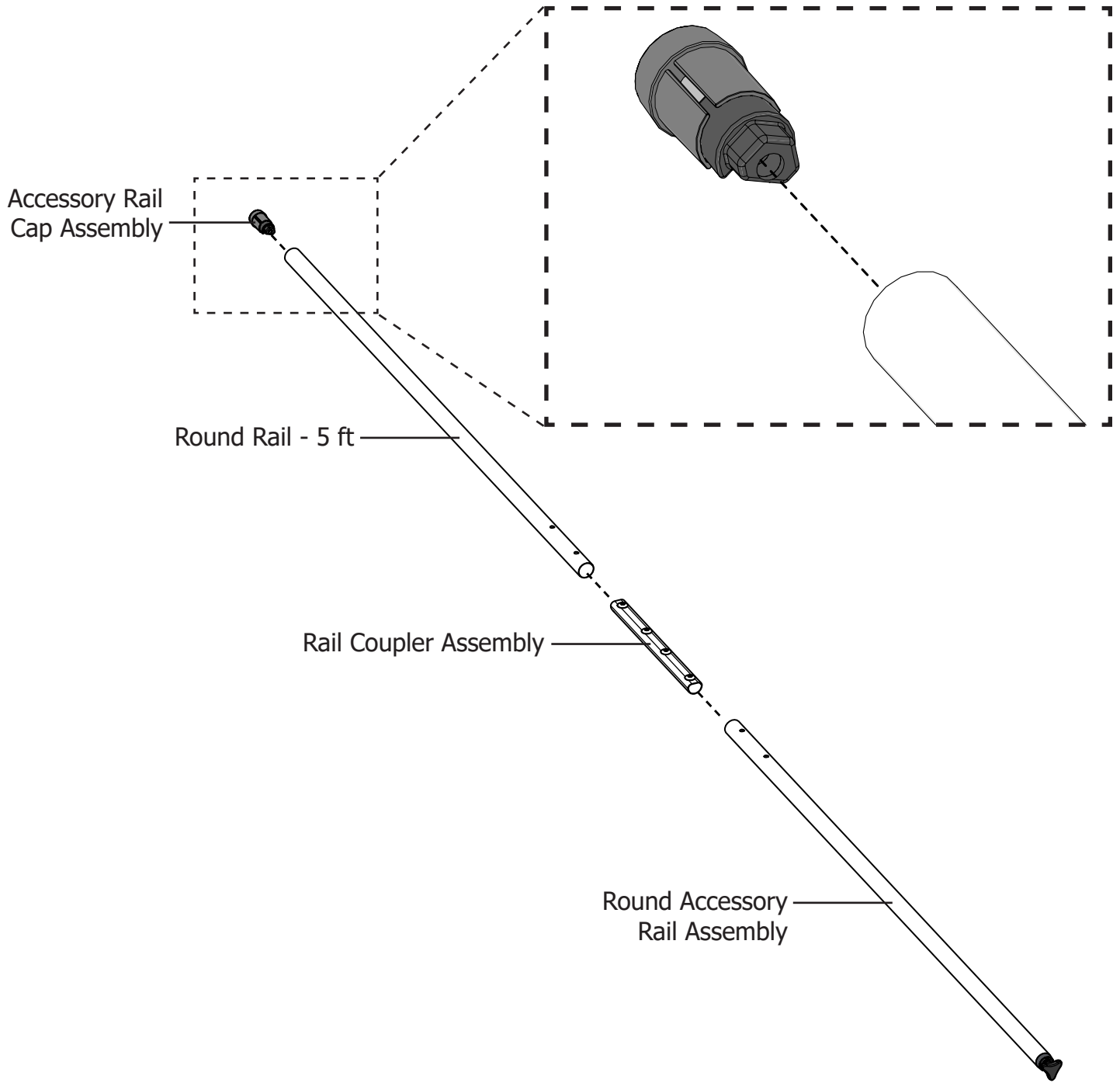


- 6 **Result:** The 8 foot accessory rail is fully assembled and ready to be installed onto the frame. Continue on page 13 to install the rail.



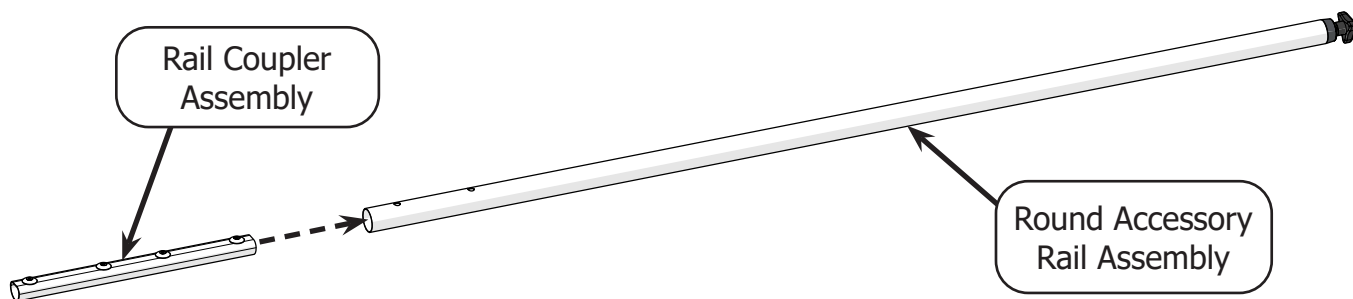
10 Foot Rail Instructions

The 10 foot accessory rail is assembled according to the following diagram:

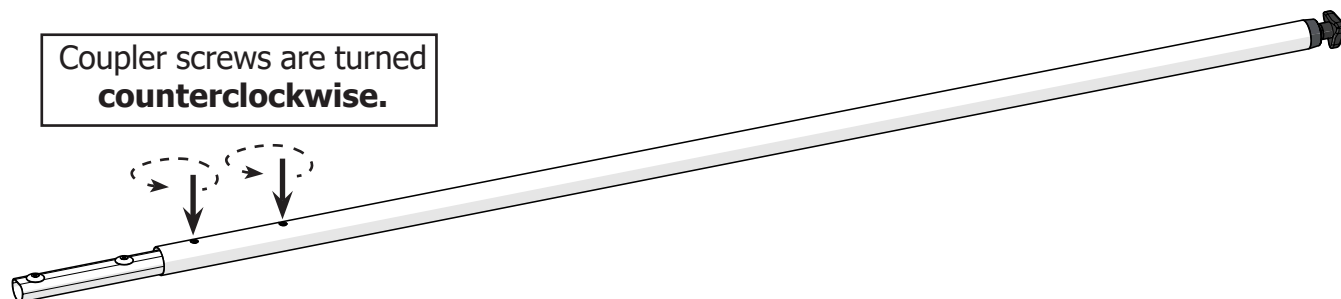


Assembling the 10 Foot Accessory Rail (continued)

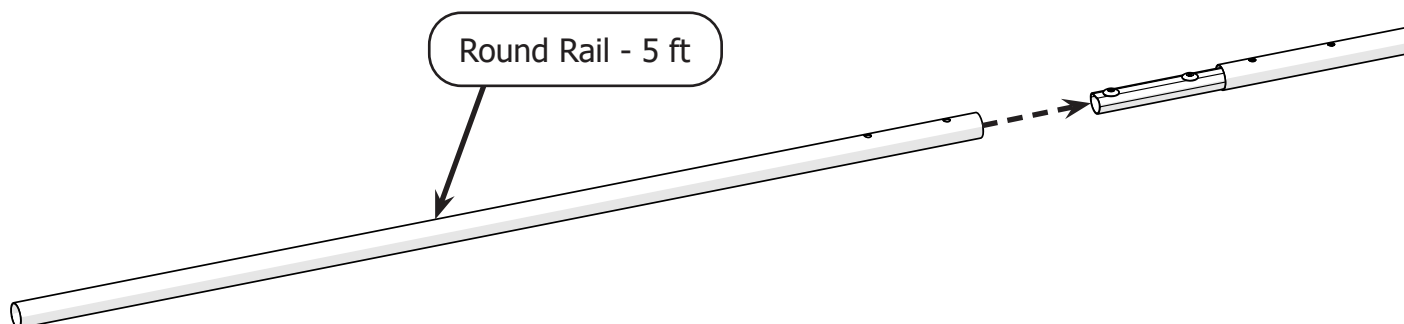
- 1 Slide a **rail coupler assembly** into the open end of the **round accessory rail assembly** until the first two screws in the coupler align with the two holes in the accessory rail.



- 2 With a 4 mm Allen wrench, turn the two aligned **rail coupler screws** counterclockwise until they press firmly against the accessory rail. This prevents the rail coupler assembly from being pulled away from the accessory rail.



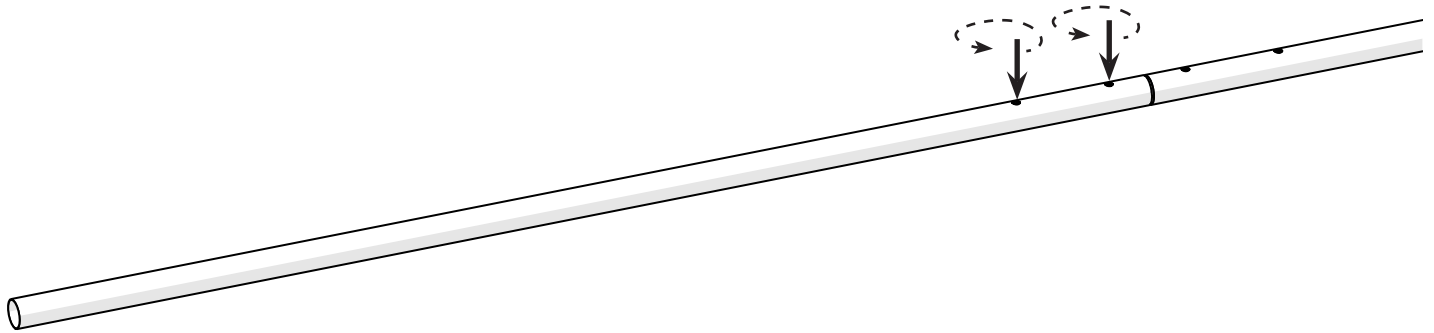
- 3 Slide the **round rail - 5 ft** onto the rail coupler assembly so the screw holes align with the coupler screws.



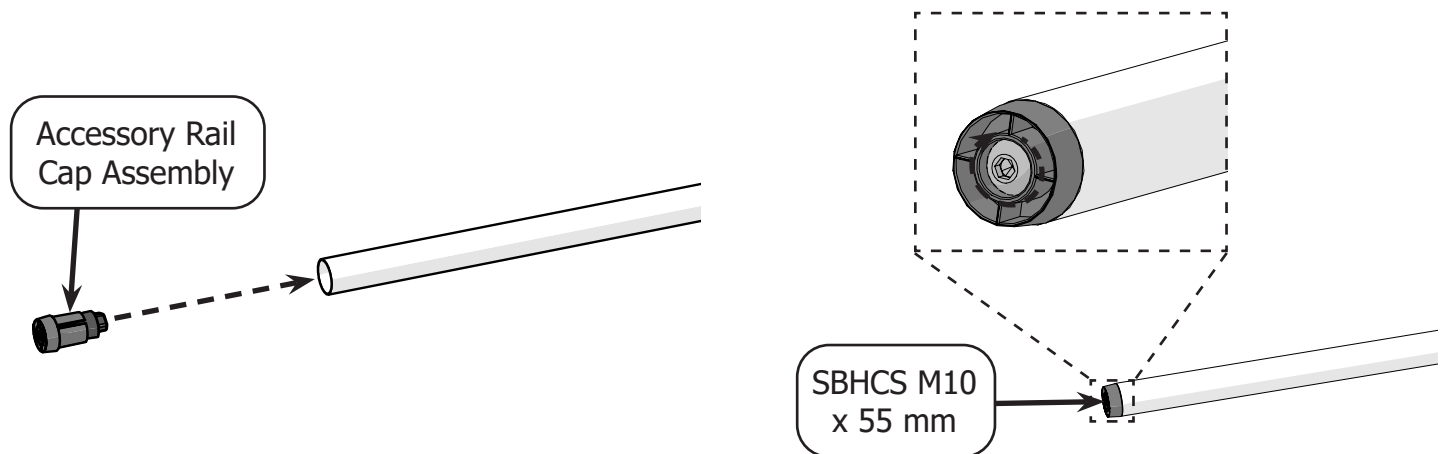
Assembling the 10 Foot Accessory Rail (continued)

- 4 Rotate the two rail coupler screws counterclockwise with a 4 mm Allen wrench until they press firmly against the 5 foot rail. This prevents the rails from being pulled away from each other.

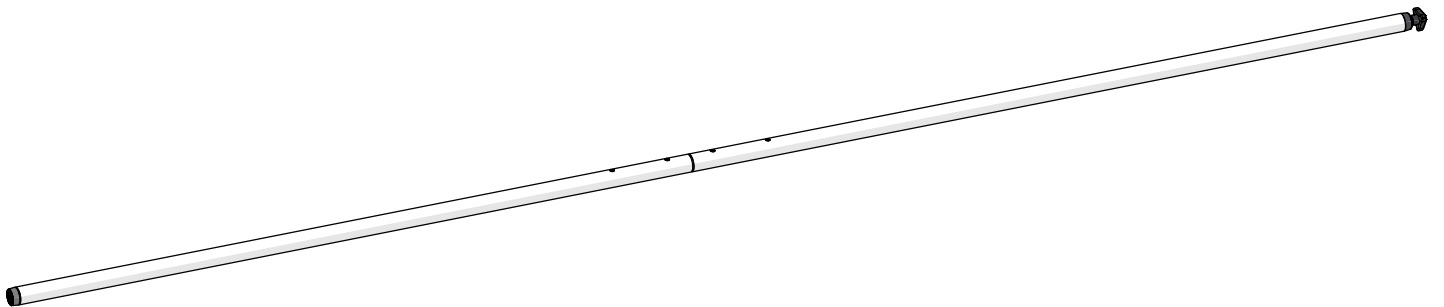
Coupler screws are turned
counterclockwise.



- 5 Press the **accessory rail cap assembly** into the open end of the 5 foot rail until it is all the way in. Tighten down the **M10 x 55 mm SBHCS** with a 6 mm Allen wrench.



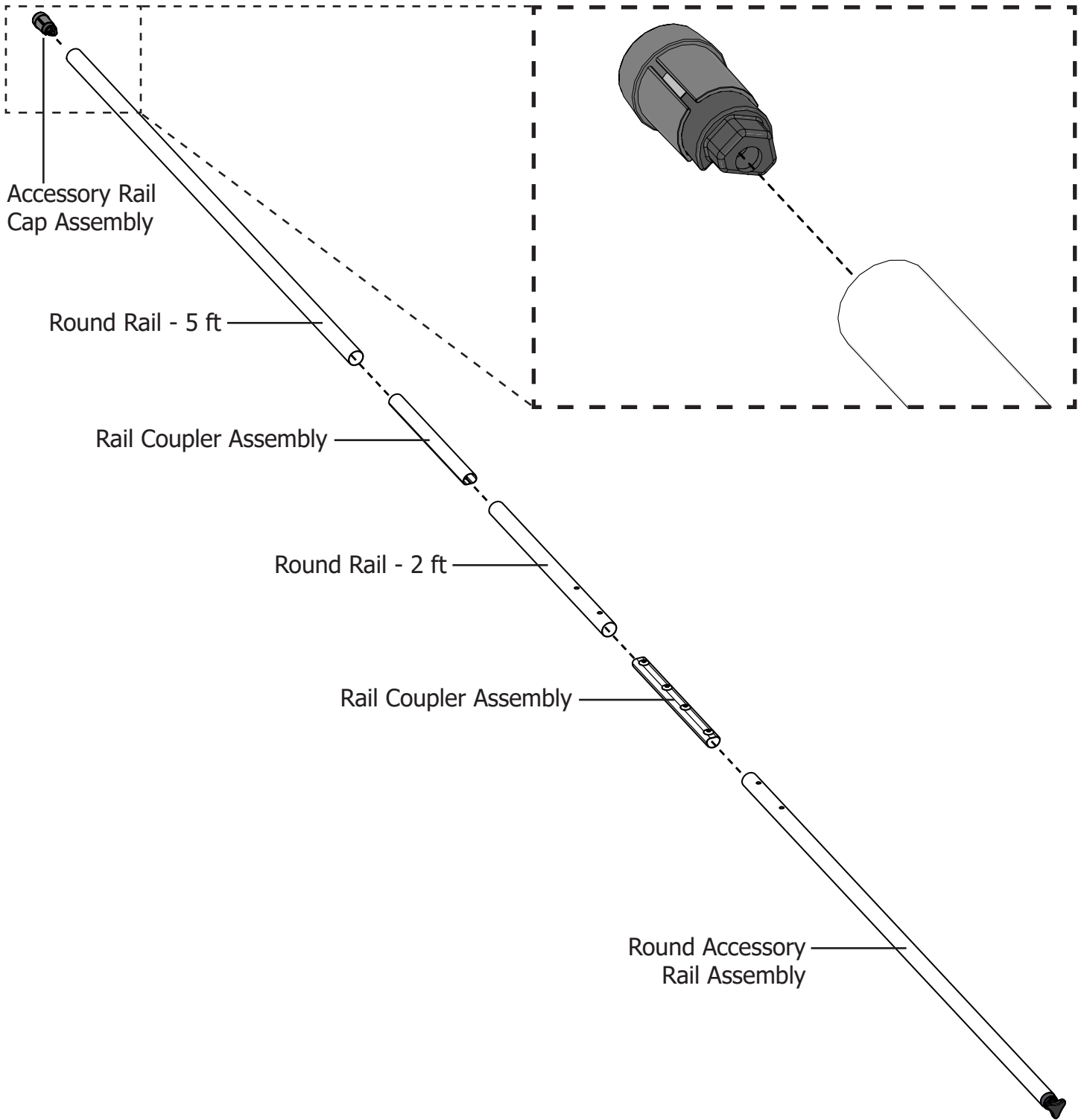
- 6 **Result:** The 10 foot accessory rail is fully assembled and ready to be installed onto the frame. Continue on page 13 to install the rail.



Assembling the 12 Foot Accessory Rail

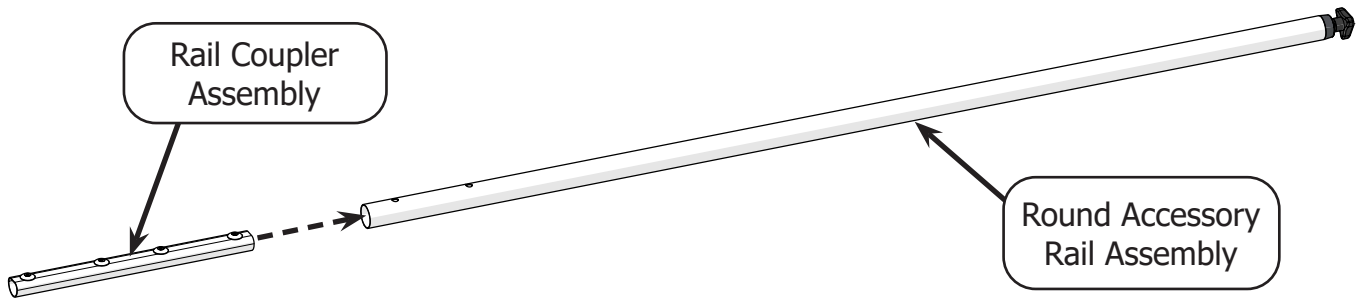
12 Foot Rail Instructions

The 12 foot accessory rail is assembled according to the following diagram:

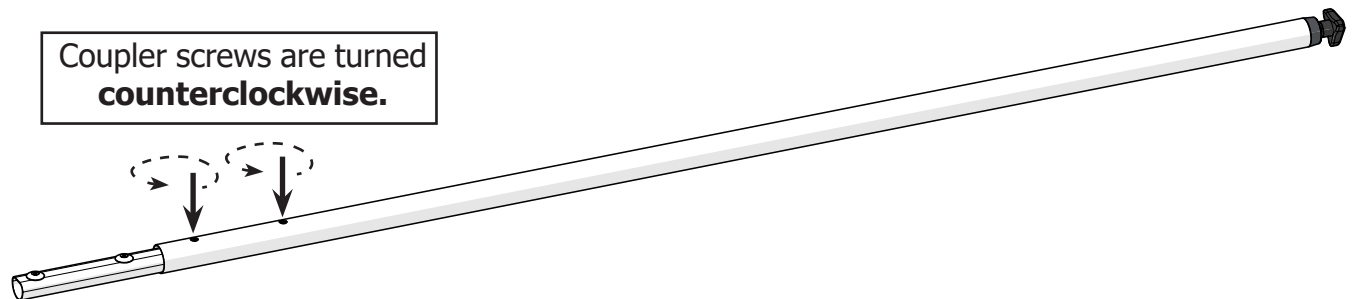


Assembling the 12 Foot Accessory Rail (continued)

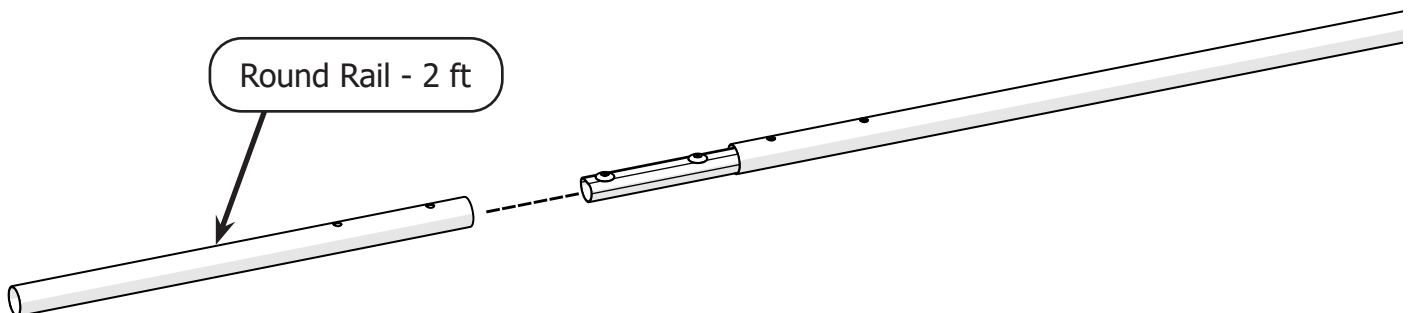
- 1 Slide a **rail coupler assembly** into the open end of the **round accessory rail assembly** until the first two screws in the coupler align with the two holes in the accessory rail.



- 2 With a 4 mm Allen wrench, turn the two aligned **rail coupler screws** counterclockwise until they press firmly against the accessory rail. This prevents the rail coupler assembly from being pulled away from the accessory rail.

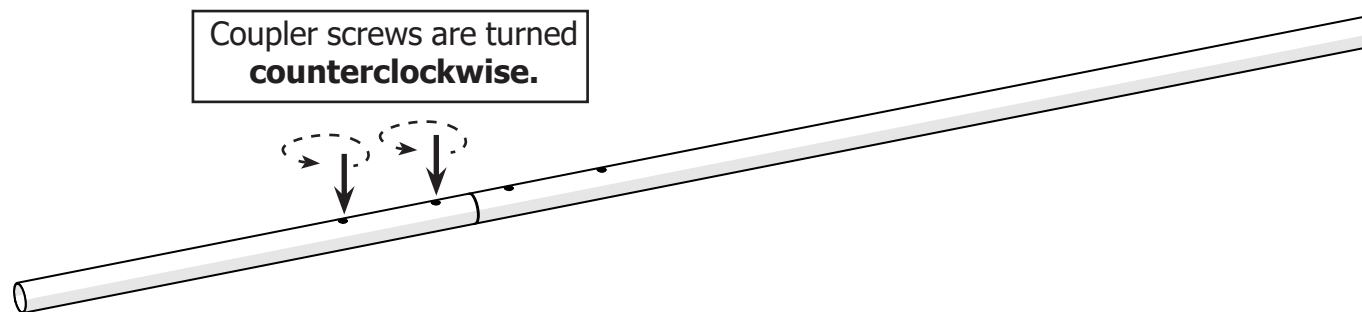


- 3 Slide the **round rail - 2 ft** onto the rail coupler assembly so the screw holes align with the coupler screws.

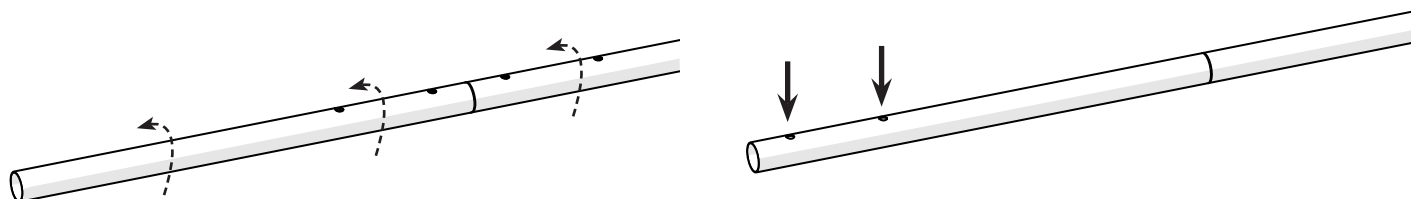


Assembling the 12 Foot Accessory Rail (continued)

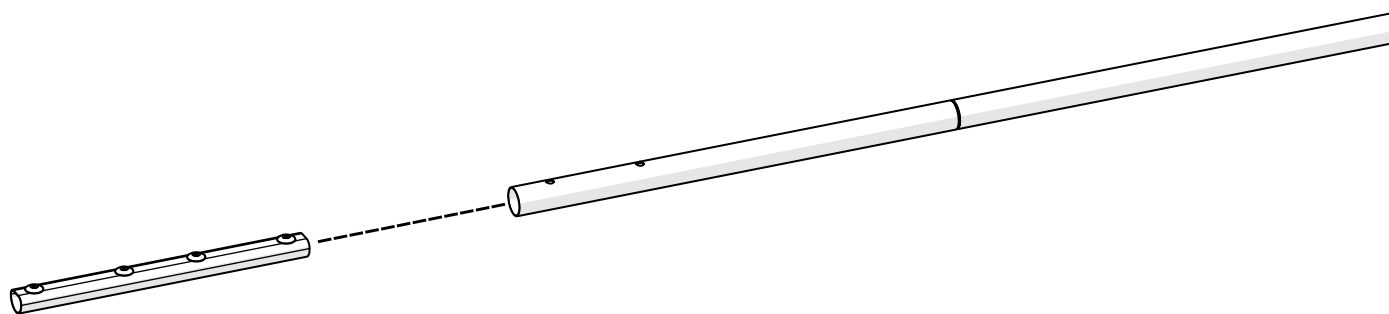
- 4 Rotate the two rail coupler screws counterclockwise with a 4 mm Allen wrench until they press firmly against the 2 foot rail. This prevents the rails from being pulled away from each other.



- 5 Roll the rail over so the two screw holes at the open end of the 2 foot rail face upward.

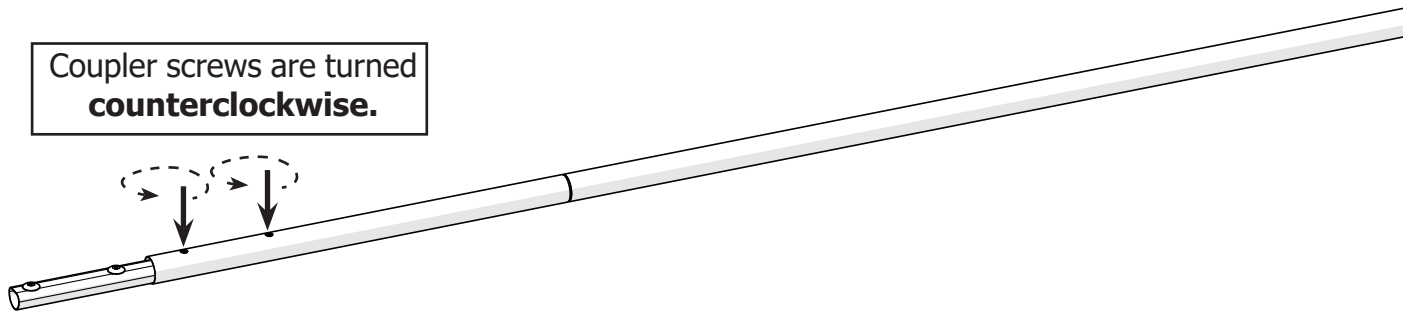


- 6 Slide the other rail coupler assembly into the end of the 2 foot rail until the first two screws in the coupler align with the two holes in the rail.

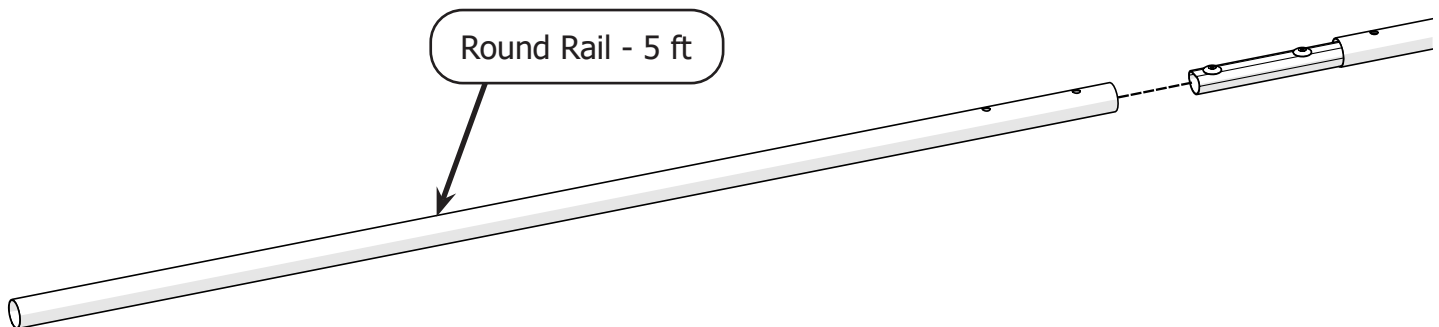


Assembling the 12 Foot Accessory Rail (continued)

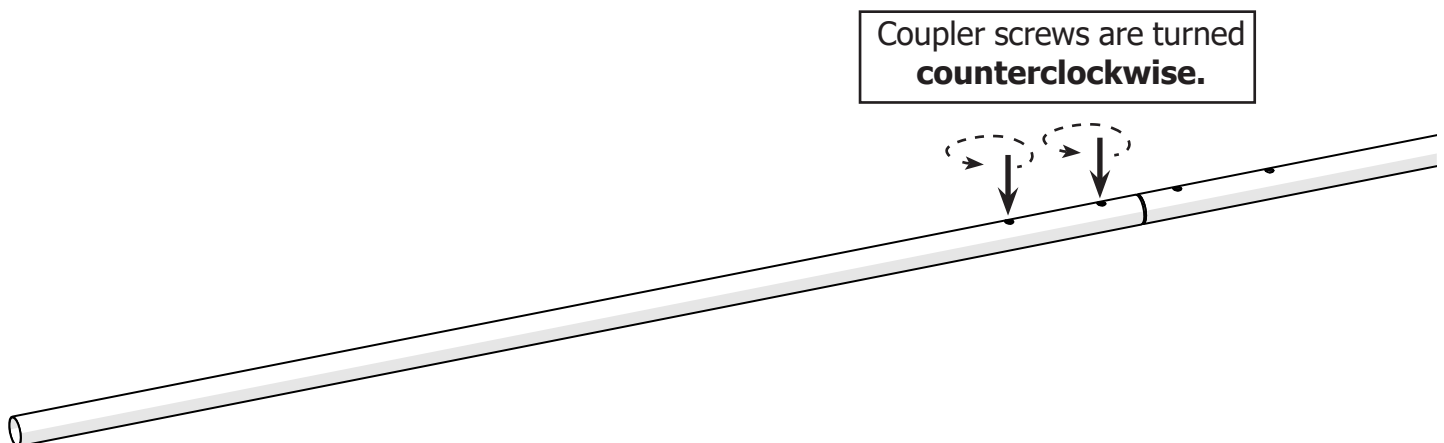
- 7 Rotate the two rail coupler screws counterclockwise with a 4 mm Allen wrench until they press firmly against the 2 foot rail.



- 8 Slide the **round rail - 5 ft** onto the rail coupler assembly so the screw holes align with the coupler screws.

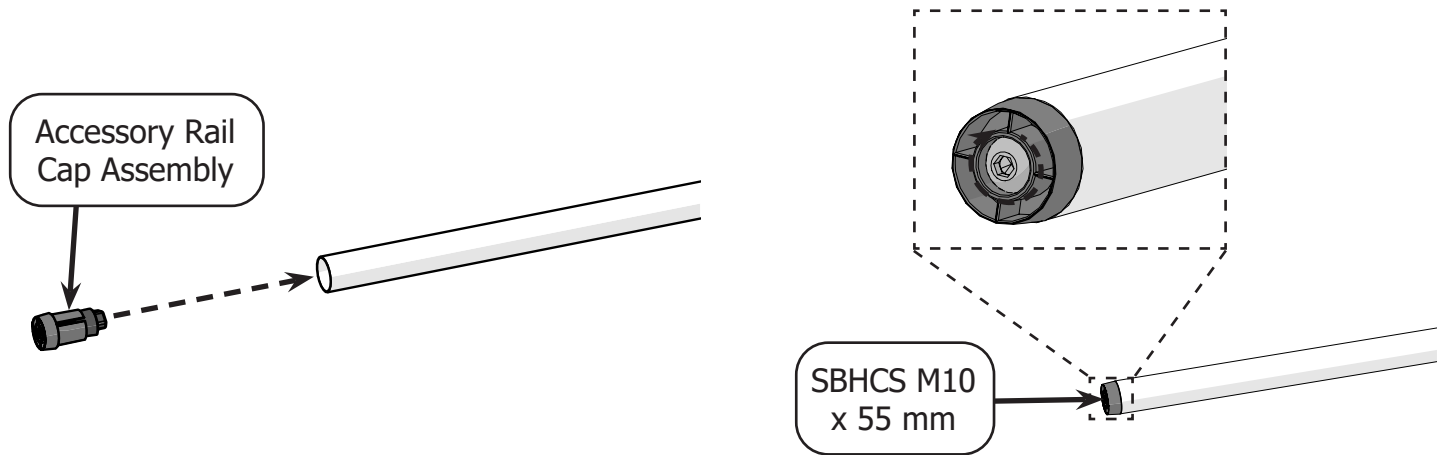


- 9 Rotate the two rail coupler screws counterclockwise with a 4 mm Allen wrench until they press firmly against the 5 foot rail.

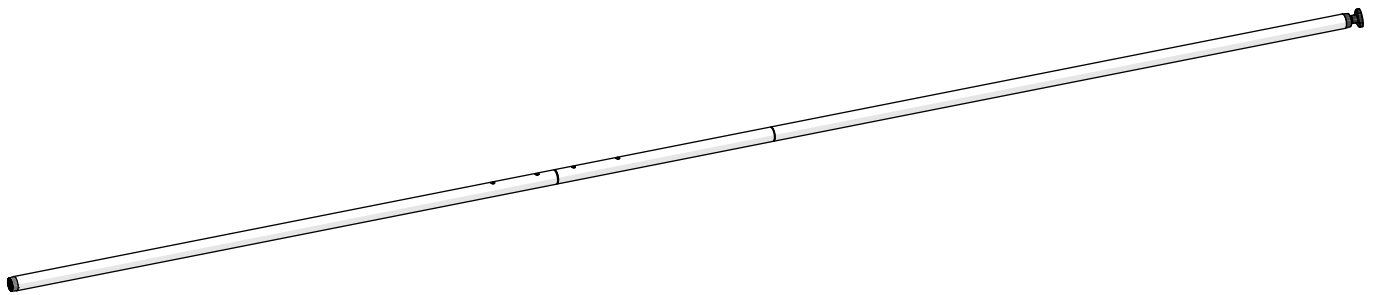


Assembling the 12 Foot Accessory Rail (continued)

- 10 Press the **accessory rail cap assembly** into the open end of the 5 foot rail until it is all the way in. Tighten down the **M10 x 55 mm SBHCS** with a 6 mm Allen wrench.



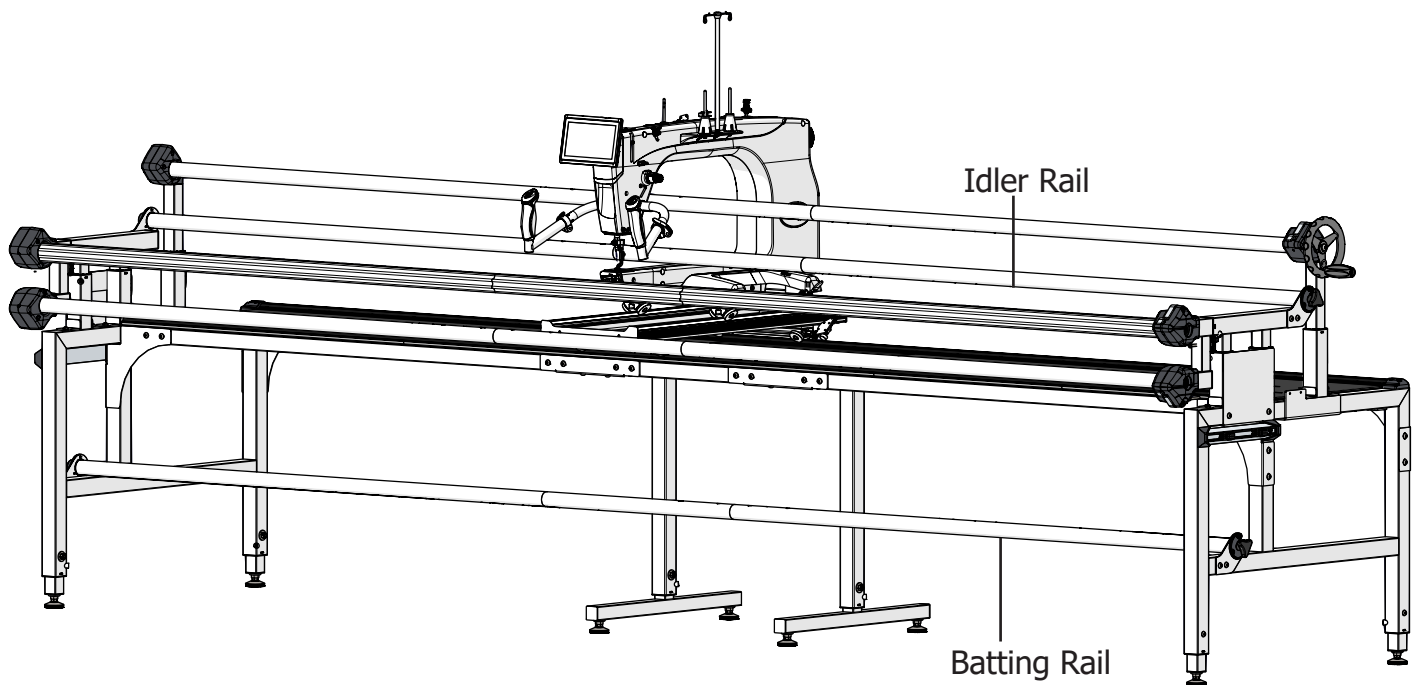
- 11 **Result:** The 12 foot accessory rail is fully assembled and ready to be installed onto the frame. Continue on the next page to install the rail.



Installing the Accessory Rail

You may install the accessory rail in either of the following configurations:

- **Idler rail:** The idler rail allows the fabric to collect on the take up-rail at a higher position, eliminating the need to constantly stop and adjust the take-up rail while quilting.
- **Batting rail:** The batting rail allows you to roll up quilt batting so it doesn't dangle on the ground. You can also keep a roll of batting on the frame and use as much as you need while quilting.



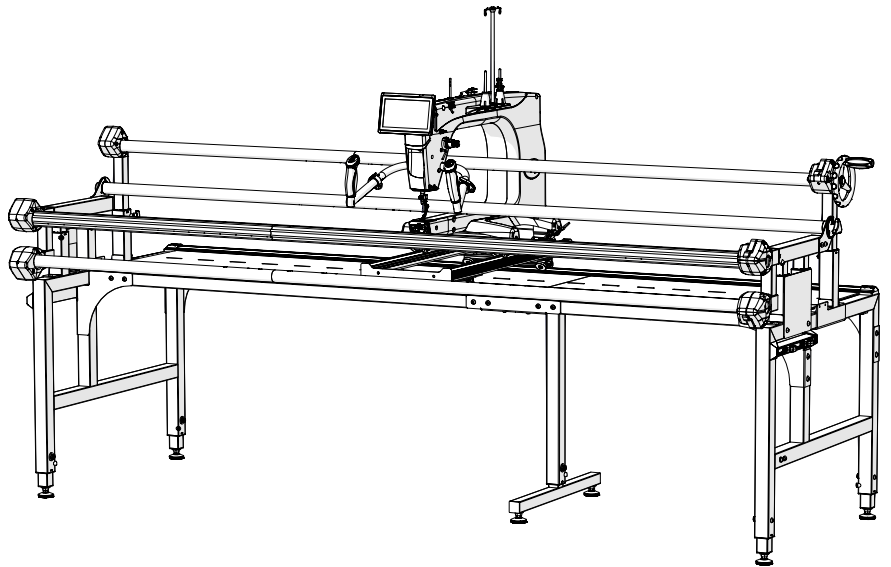
To install the **idler rail** continue to the next page.

To install the **batting rail** turn to page 17.

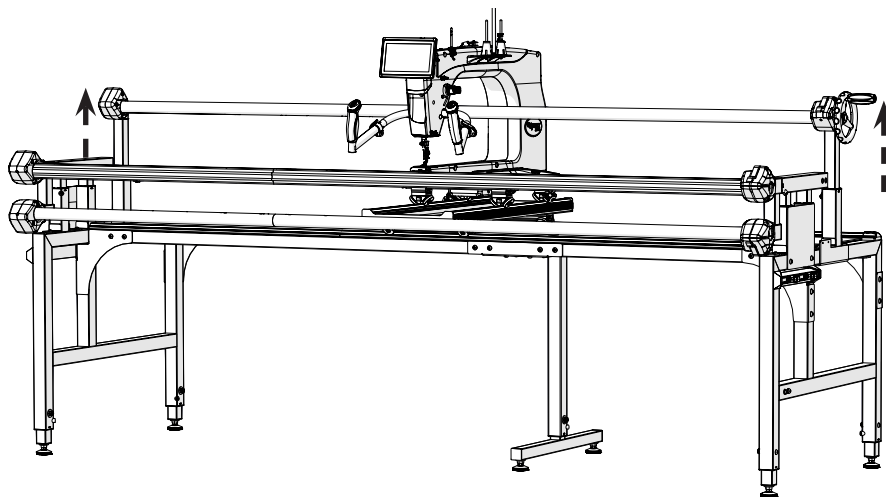
Installing the Idler Rail

Idler Rail Instructions

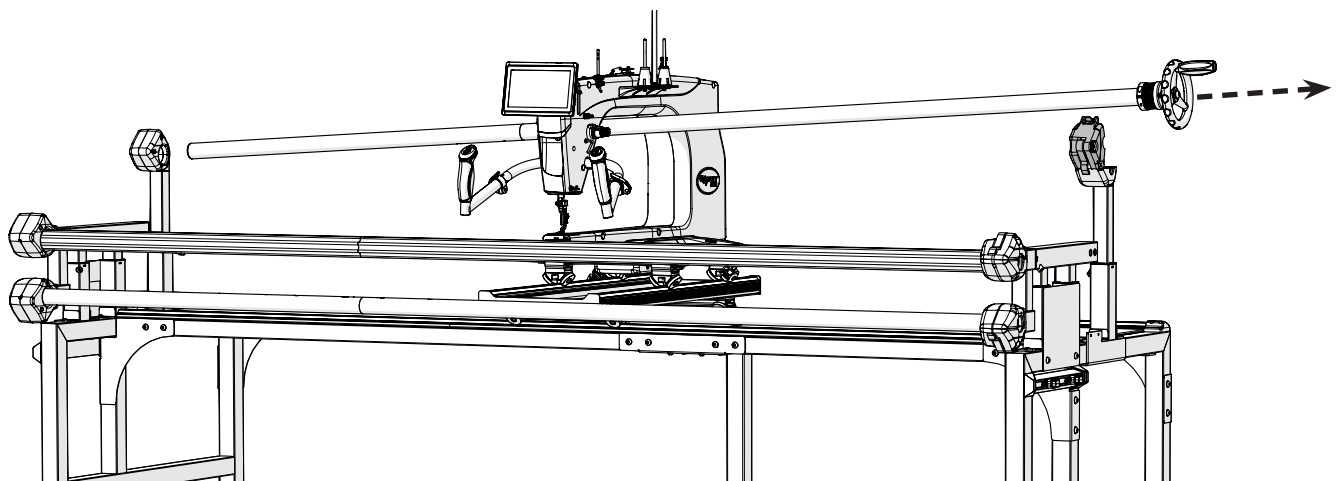
Take the following steps to install the idler rail:



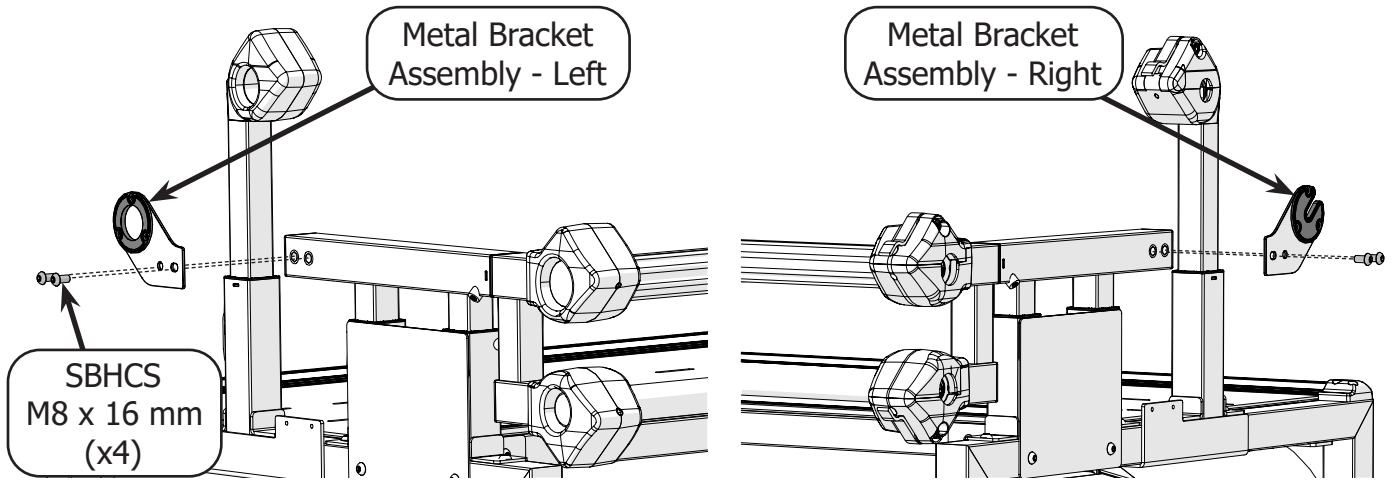
- 1 Raise the take-up rail as high as it will go.



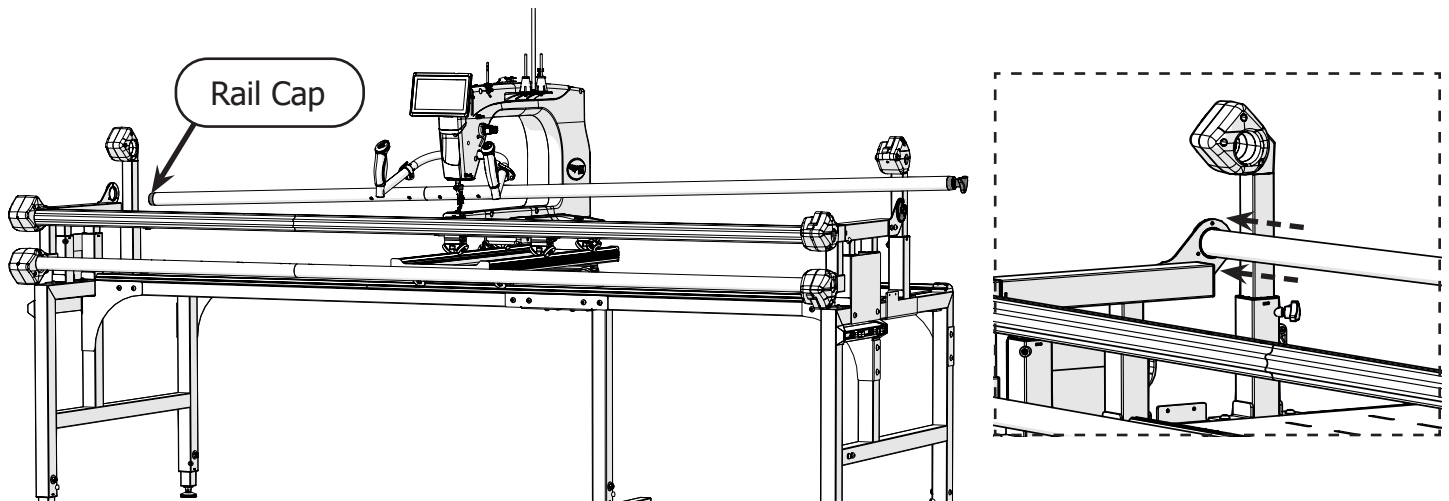
- 2 Remove the take-up rail from the frame.



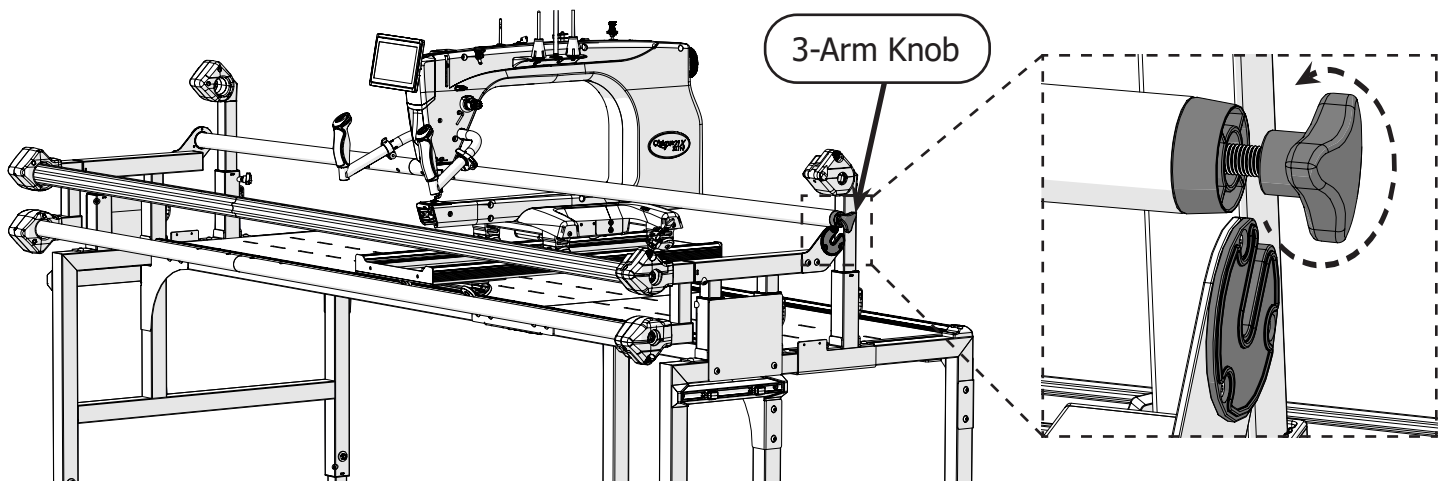
- 3 With a 5 mm Allen wrench and four **M8 x 16 mm SBHCS**, attach the **metal bracket assembly - left** to the left side rail and the **metal bracket assembly - right** to the right side rail.



- 4 With the **rail cap** facing left, guide the accessory rail through the throat of the machine and insert it into the left metal bracket.

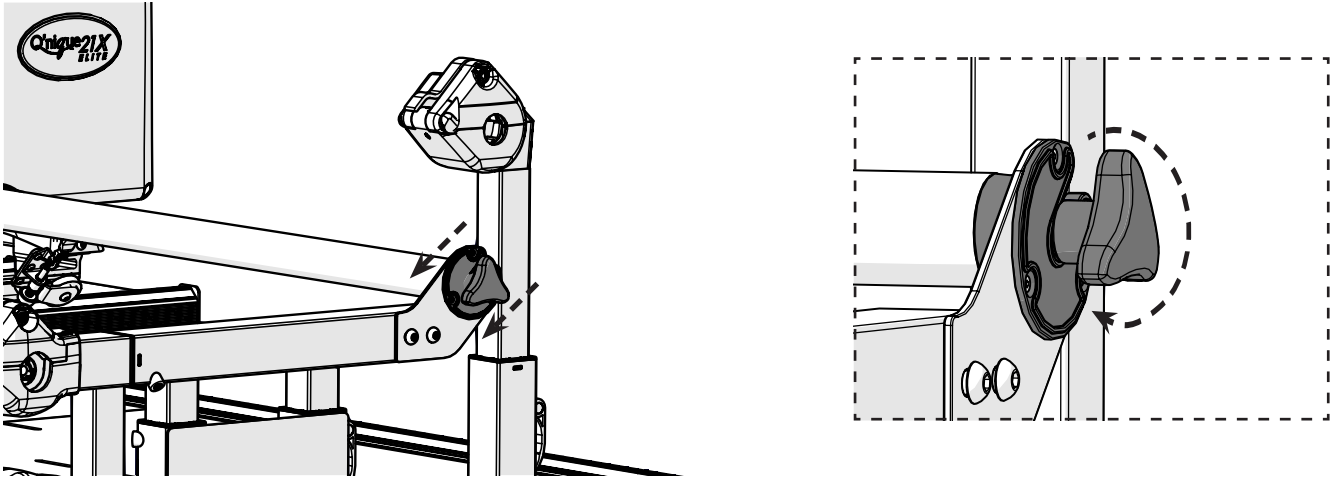


- 5 Unscrew the **3-arm knob** until it extends slightly beyond the right metal bracket.

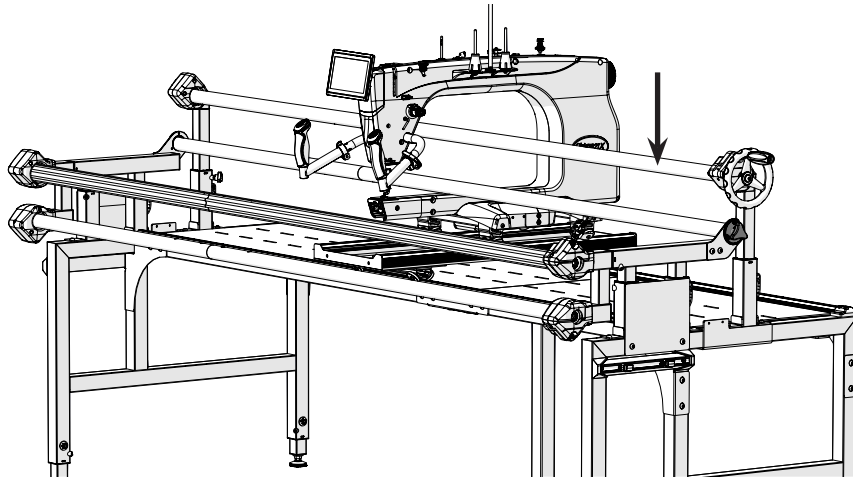


Installing the Idler Rail (continued)

- 6 Slide the right end of the rail into the right metal bracket, then tighten down the 3-arm knob.



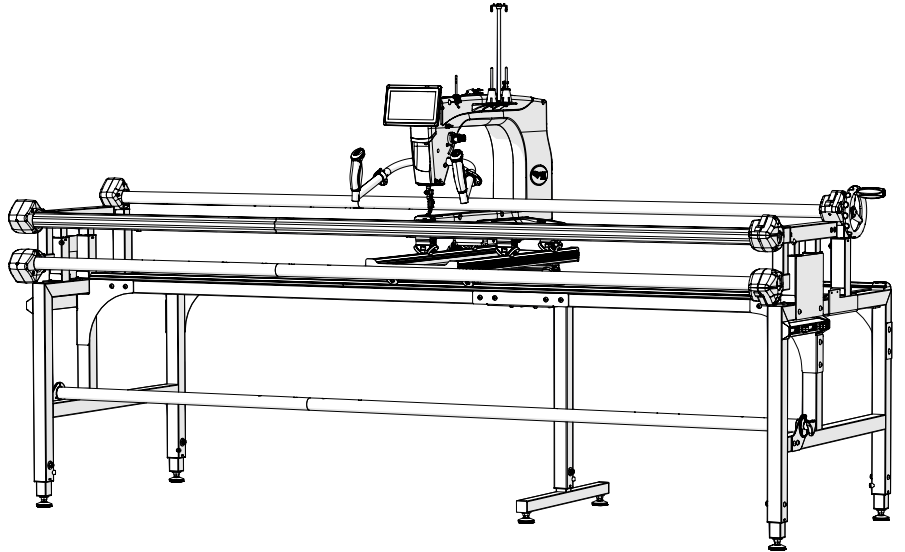
- 7 Reinstall the take-up rail to complete the setup.



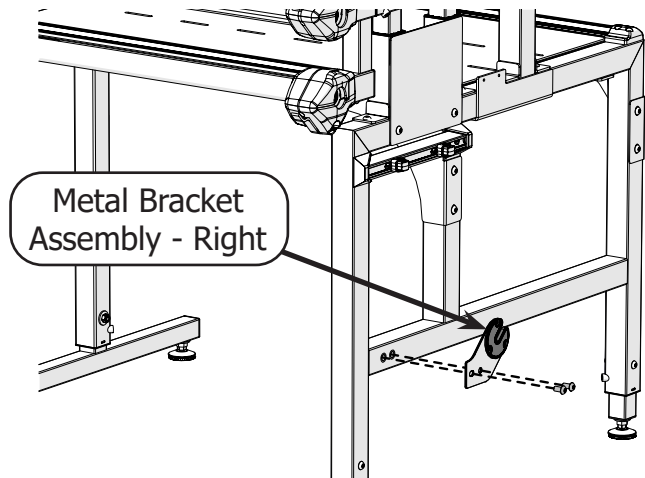
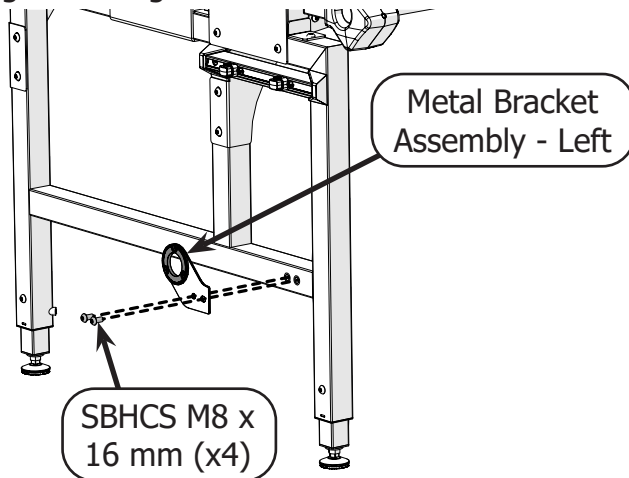
- 8 **Result:** Your idler rail is set up and ready for use while quilting.

Batting Rail Instructions

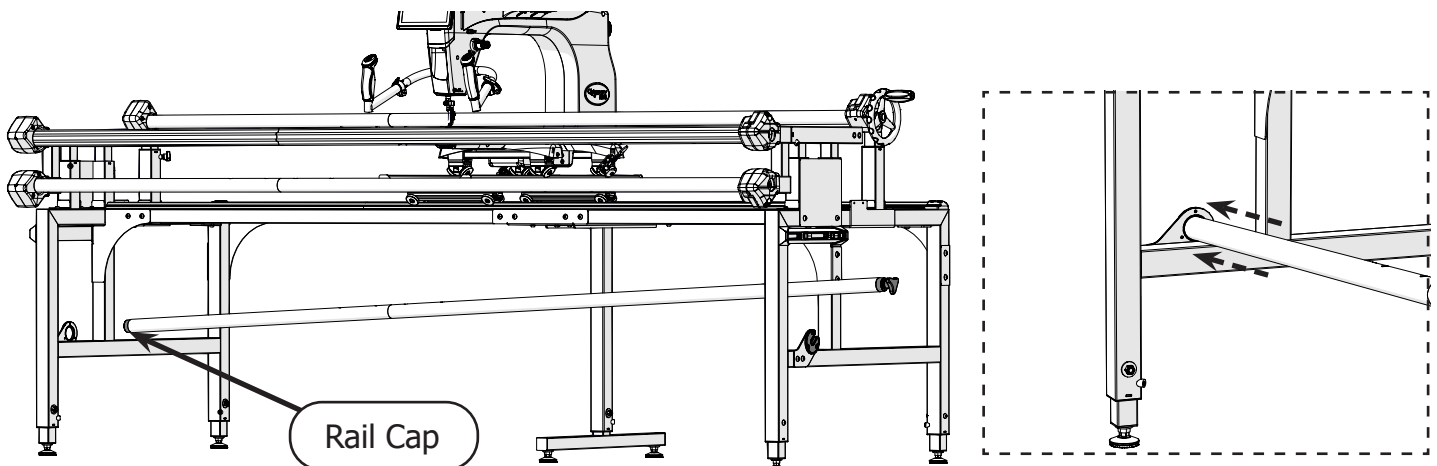
Take the following steps to install the batting rail:



- 1 With a 5 mm Allen wrench and four **M8 x 16 mm SBHCS**, attach the **metal bracket assembly - left** to the left side leg and the **metal bracket assembly - right** to the right side leg.

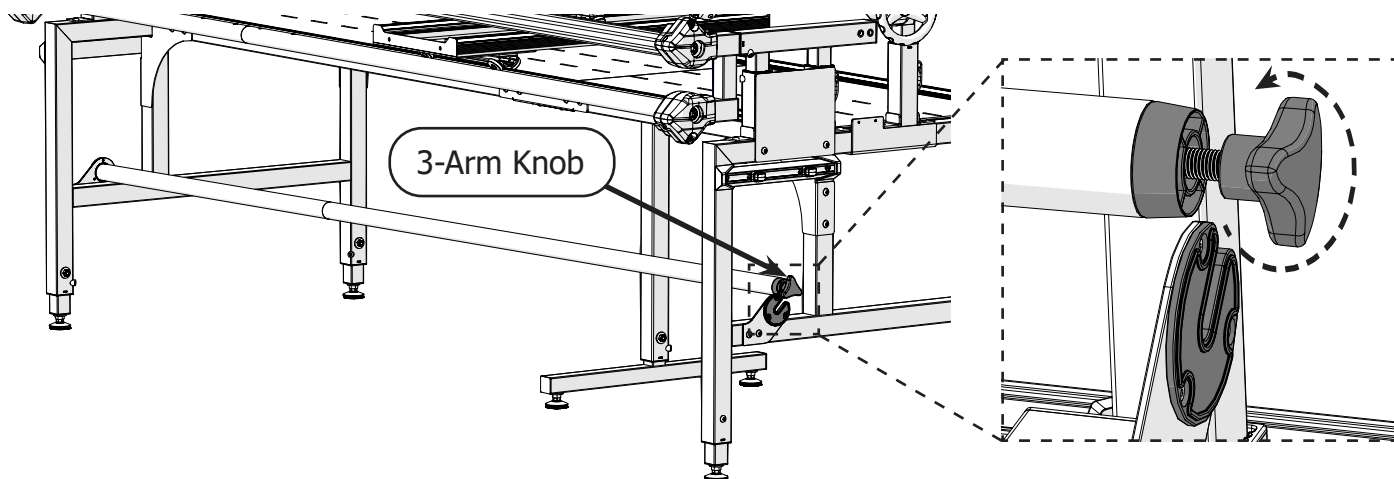


- 2 With the **rail cap** facing left, guide the accessory rail through the underside of the frame and insert it into the left metal bracket.

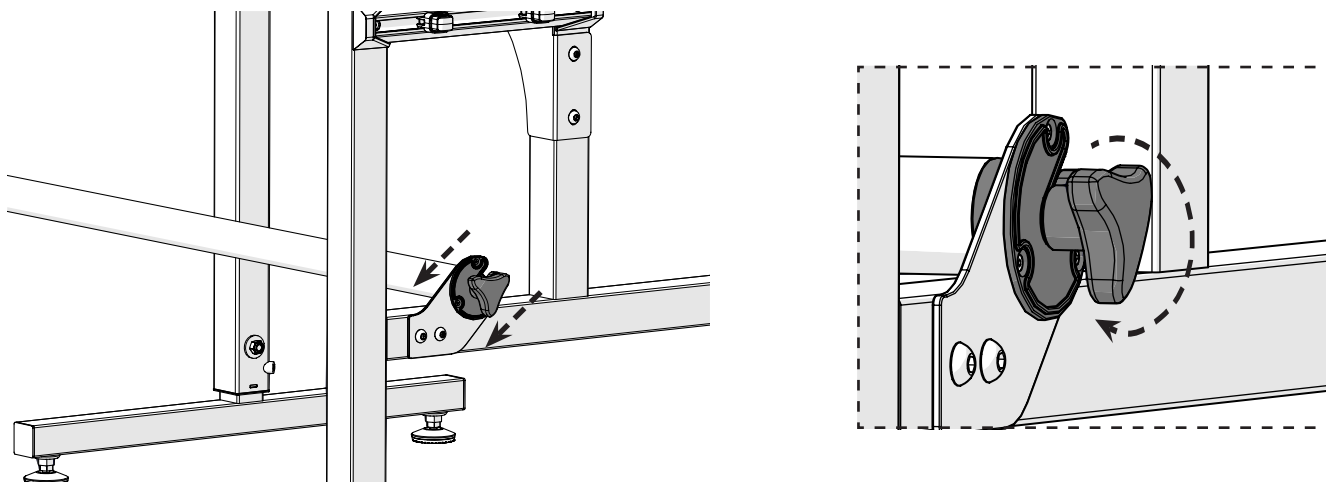


Installing the Batting Rail (continued)

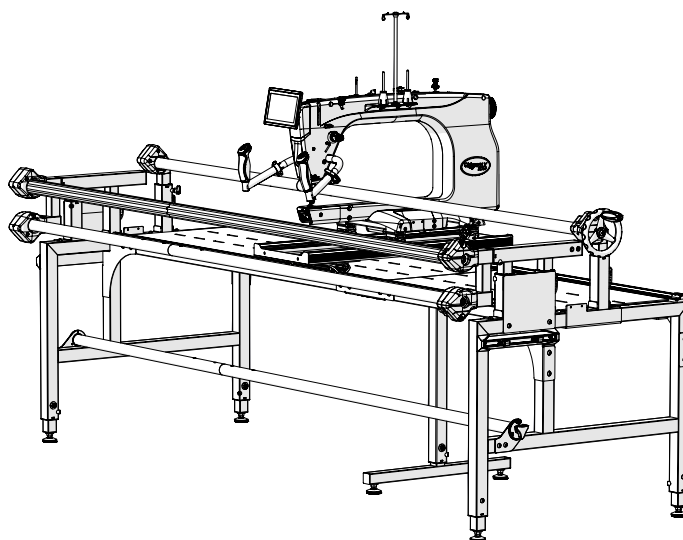
- 3 Unscrew the **3-arm knob** until it extends slightly beyond the right metal bracket.



- 4 Slide the right end of the rail into the right metal bracket, then tighten down the 3-arm knob.



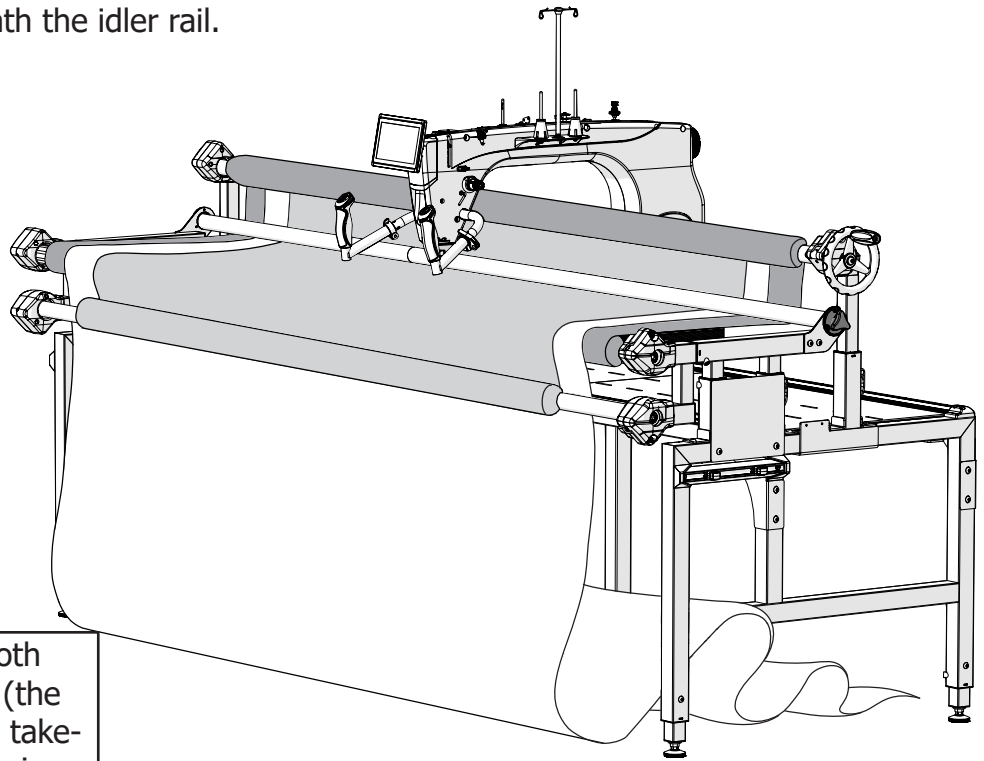
- 5 **Result:** Your batting rail is set up and ready for use while quilting.



Fabric Installation

Idler Setup

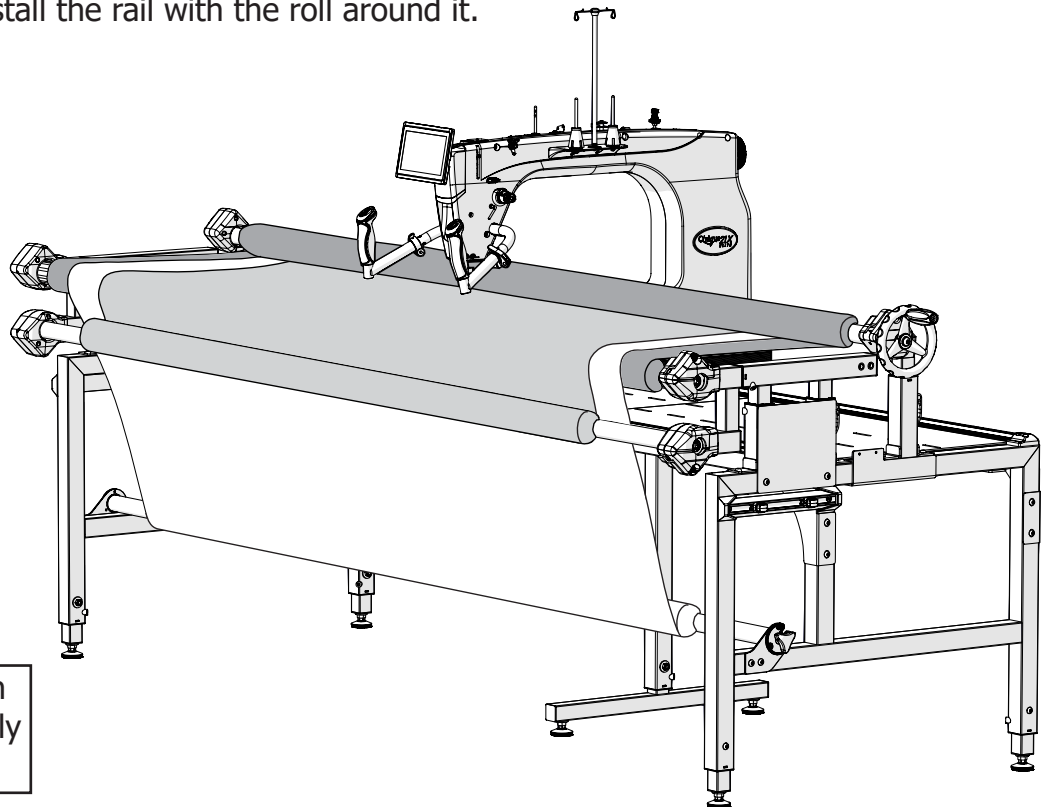
The fabric is routed underneath the idler rail.



Important: Swap the cloth leader on the quilt-top rail (the widest cloth leader) and the take-up rail before installing fabric.

Batting Setup

The fabric is wrapped around the batting rail. Alternatively, remove the rail, slide it into the center of a roll of batting, and re-install the rail with the roll around it.



Large rolls of batting can also be stored permanently on the batting rail.

Grace
COMPANY

www.graceframe.com

1-801-485-6688