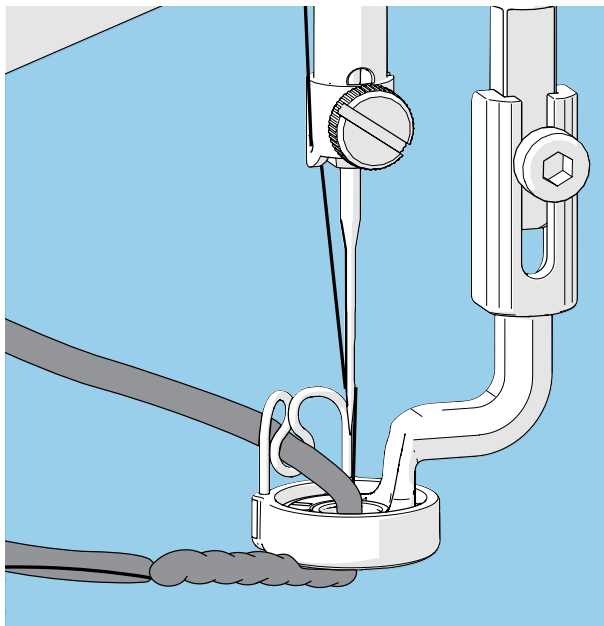


9-Piece Foot Attachment Set

Installation Instructions



V 2.0

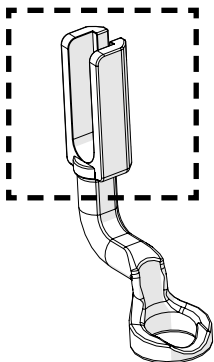
Copyright Jan 21, 2021

Grace
COMPANY

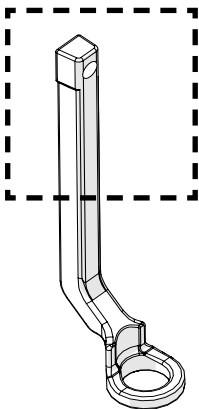
IMPORTANT: READ FIRST

Check the style of hopping foot currently installed on your machine.

If it is not the most recent version, you will need to purchase the Standalone Hopping Foot Collar on the Grace Company website before you can use this accessory.



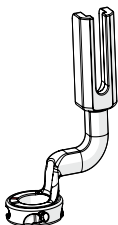
Continue with these instructions.



Visit www.graceframe.com
to purchase the
**Standalone Hopping
Foot Collar.**

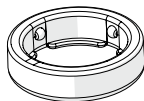
Included Parts and Tools

Attachment Hopping Foot



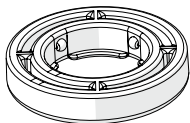
SMP-04-11706

Echo Attachment .75 in



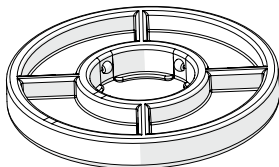
SMP-05-11955

Echo Attachment 1 in



SMP-05-11953

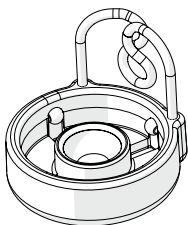
Echo Attachment 1.5 in



SMP-05-11954

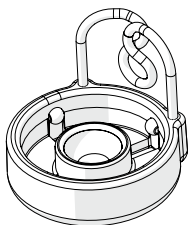
Included Parts & Tools (continued)

Small Couching Attachment



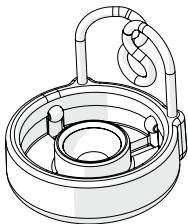
SMP-05-11956

Medium Couching Attachment



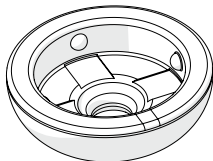
SMP-05-11957

Large Couching Attachment



SMP-05-11958

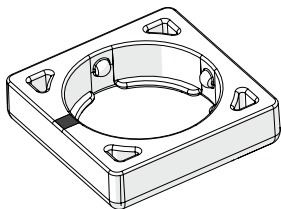
Glide Attachment



SMP-05-11959

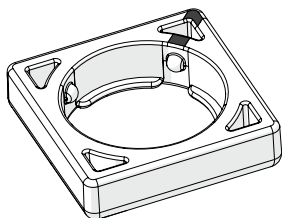
Included Parts & Tools (continued)

Diamond Attachment



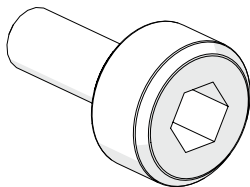
SMP-05-11952

Square Attachment



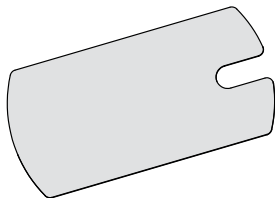
SMP-05-11951

SHCS M3 x 8 mm



HDW-03-10966

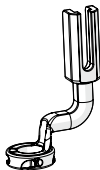
Hopping Foot Height Tool



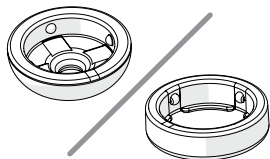
SMP-04-12171

Installing the Attachment Feet

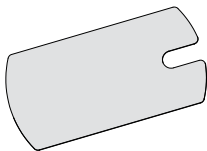
Parts & Tools Needed:



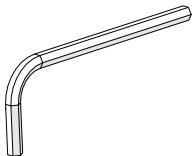
Attachment
Hopping Foot



Any Accessory
Attachment



Hopping Foot
Height Tool



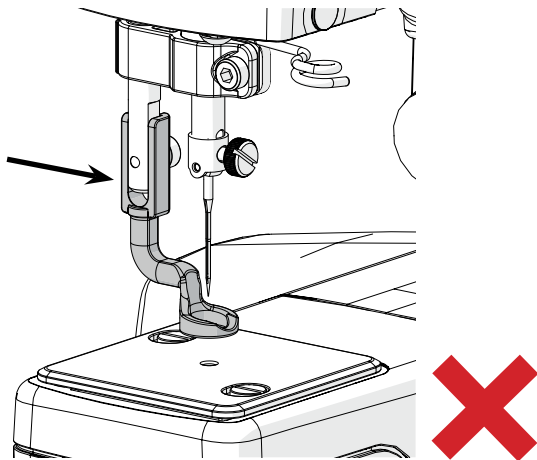
Allen Wrench 3 mm
(not included)

Instructions

To swap to one of the attachment feet, take the steps starting on the next page.

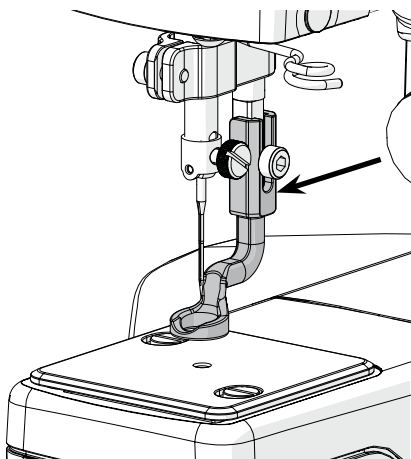
Installing the Feet (continued)

- 1 Q'nique 19 and 21 Users Only:**
Check the position of your hopping foot. The couching attachments can only be used if the hopping foot is set directly behind the needle.



See your machine's instruction manual for steps on changing the hopping foot orientation.

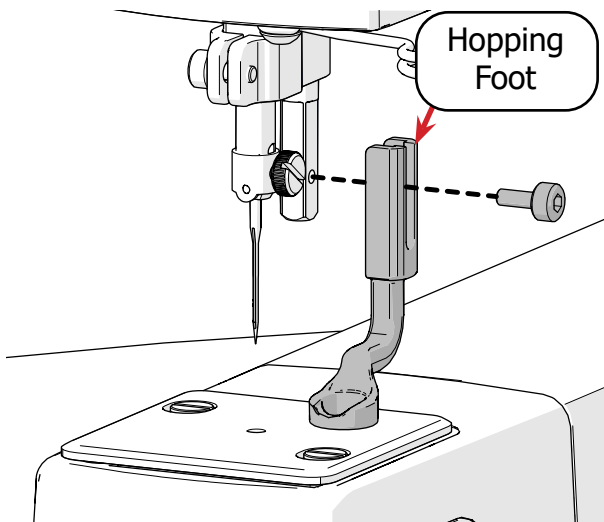
Installing the Feet (continued)



Continue with these instructions.

Installing the Feet (continued)

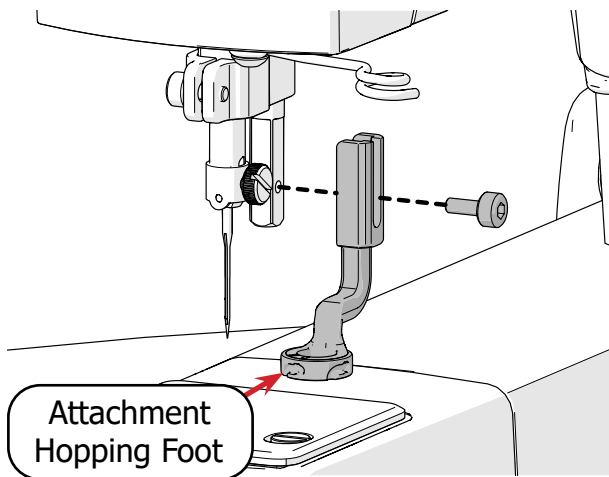
- 2 Unscrew the **hopping foot** from the machine with a 3 mm Allen wrench.



Your machine may not look exactly like the one in the images. However, the installation steps are still the same.

Installing the Feet (continued)

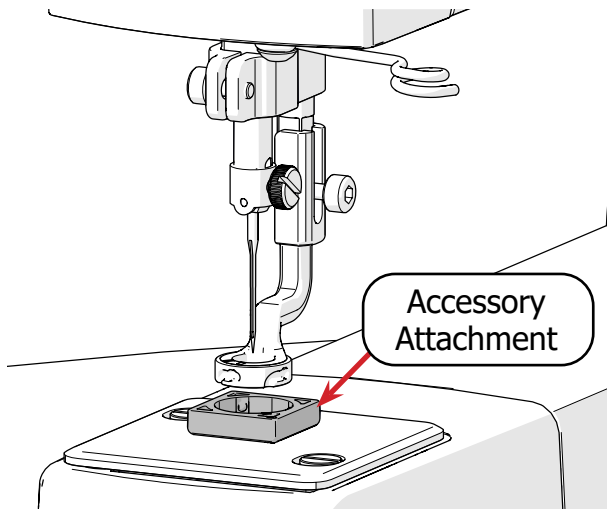
- 3 Screw the **attachment hopping foot** to the machine. Leave room underneath the foot to slide on the attachments.



Tip: In the future, leave the attachment foot installed so that you can quickly swap between accessory attachments.

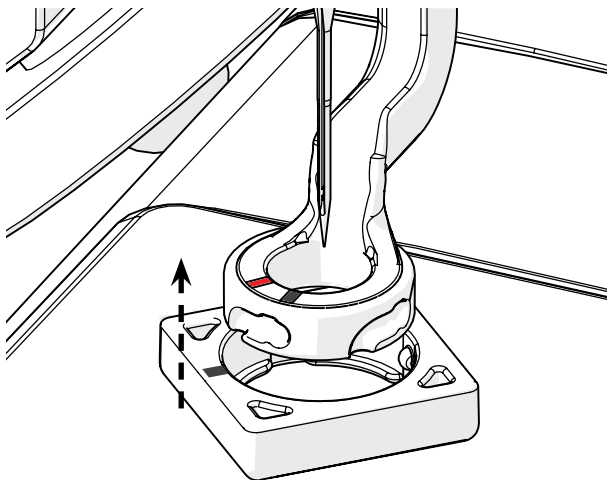
Installing the Feet (continued)

- 4 Slide one of the nine **accessory attachments** underneath the foot.



Installing the Feet (continued)

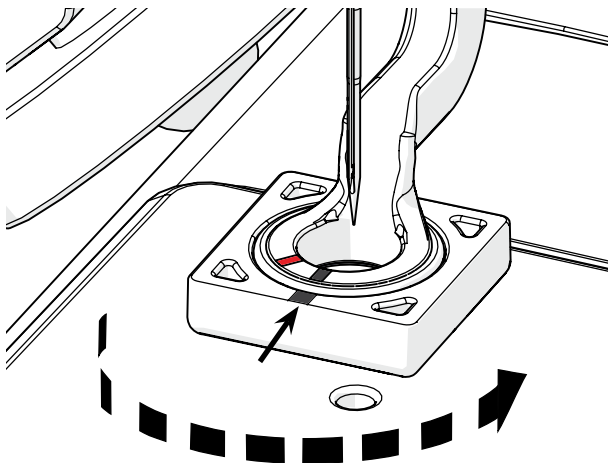
- 5 Align the **black mark** on the attachment with the **red mark** on the foot. Then press the attachment up onto the foot.



Caution: Always take care when handling objects near the needle.

Installing the Feet (continued)

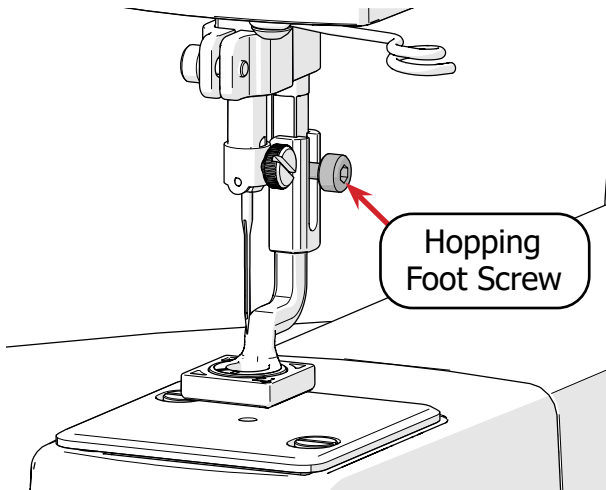
- 6 Twist the foot until the black marks align and the foot locks into place.



Note: To remove an attachment, twist the foot the other direction so the black mark aligns with the red mark. Then pull the attachment down.

Installing the Feet (continued)

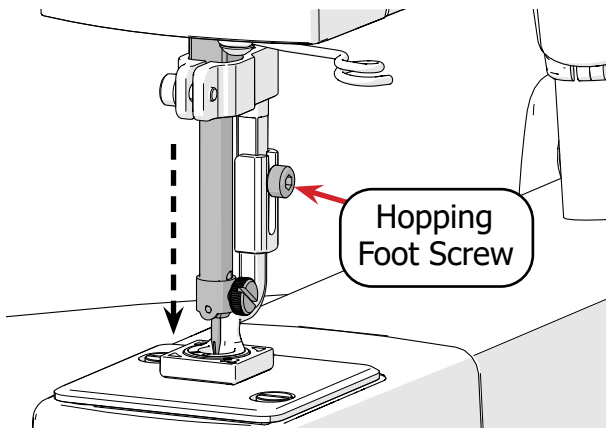
- 7 Loosen the **hopping foot screw** with a 3 mm Allen wrench.



Important: The hopping foot should be loose enough that the hopping foot can slide freely up and down on the bar.

Installing the Feet (continued)

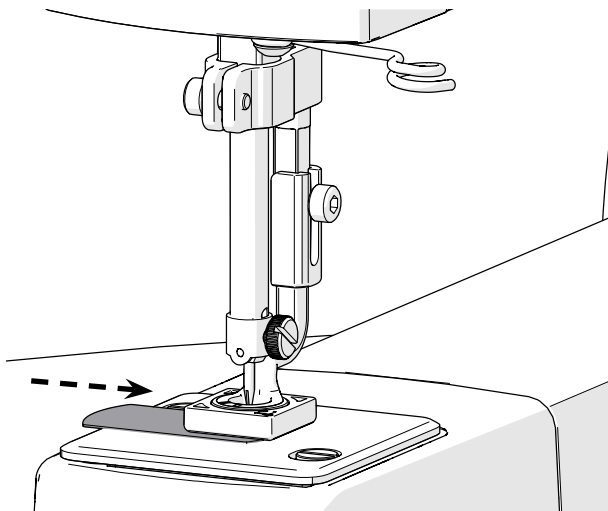
- 8 Move the machine away from any fabric. Use the machine hand wheel to drop the needle to the lowest position. If you feel resistance, loosen the **hopping foot screw** more.



When using a couching foot, take special care that the needle passes through the center hole in the bottom of the foot.

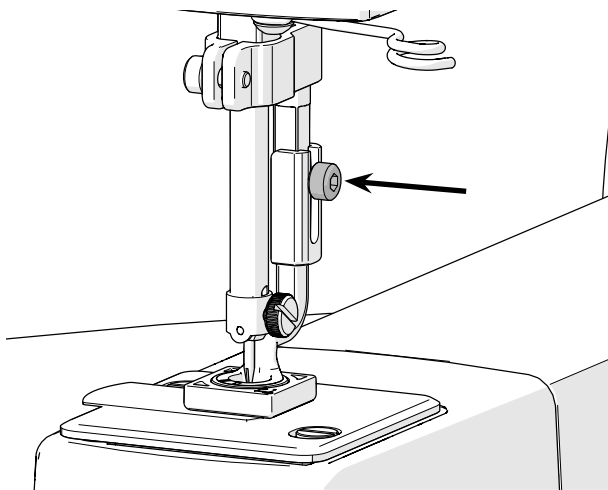
Installing the Feet (continued)

- Slide the **hopping foot height tool** (shown in gray) underneath the hopping foot.



Installing the Feet (continued)

- 10 Tighten the hopping foot screw with a 3 mm Allen wrench.

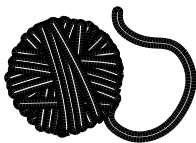


Quilting with Yarn: Couching

Parts & Tools Needed:



Couching Foot
(any size)



Yarn
(not included)

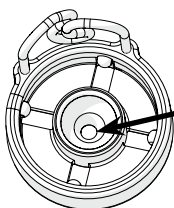
Instructions

The couching foot positions yarn or specialty thread so that they can be stitched onto the surface of the quilt.

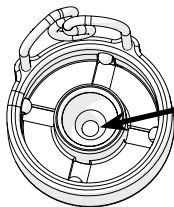
You'll need to use the correct size attachment for the yarn you've chosen. If the couching foot is too small, the yarn will not fit through the center hole in the foot. If the couching foot is too large, the yarn will shift out of position and the needle will miss it when making stitches.

Couching (continued)

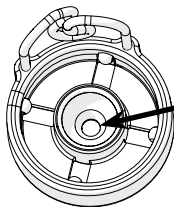
To estimate which couching foot to use, thread the end of the yarn through the center in the foot. It should completely fill the hole without bunching up.



Small center:
Pair with thin yarn.



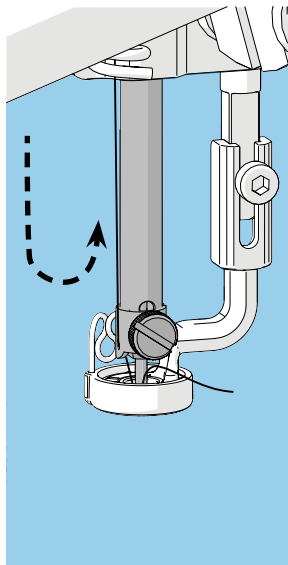
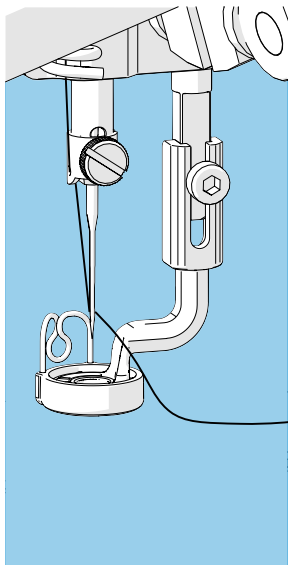
Medium center:
Pair with medium
yarn.



Large center:
Pair with thick yarn.

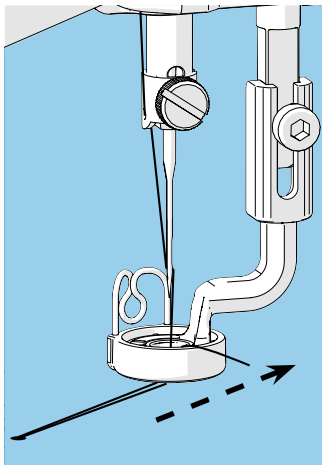
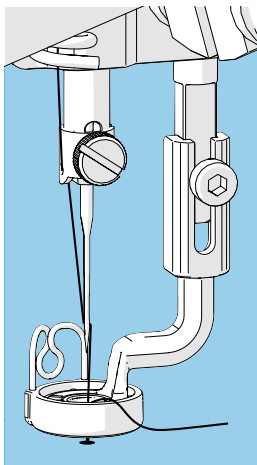
Couching (continued)

- 1 After installing the couching attachment of the appropriate size, make a single stitch (needle down and back up one time).



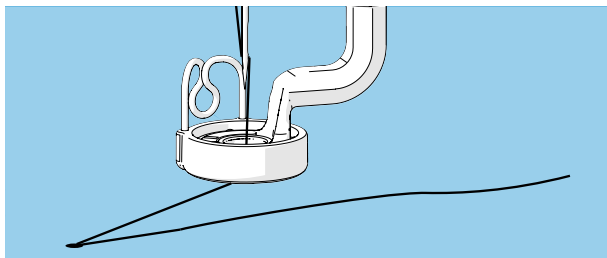
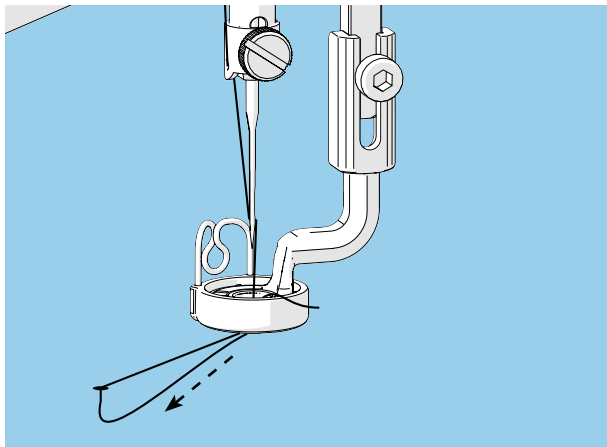
Couching (continued)

- 2 Move the machine away from the single stitch you just made.



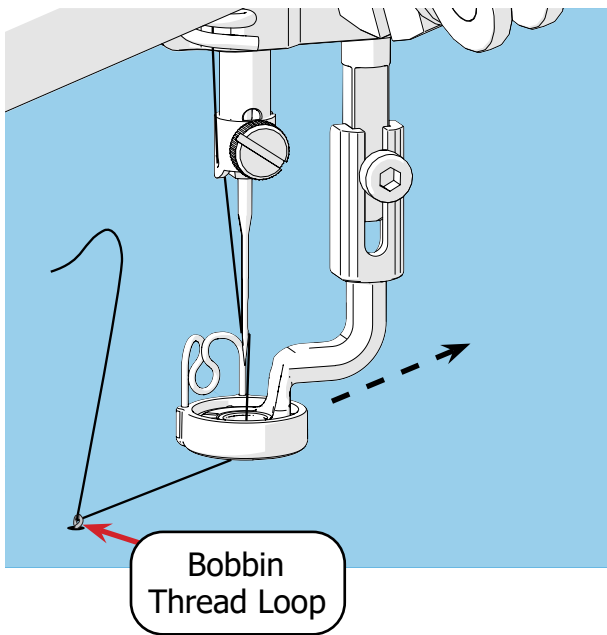
Couching (continued)

- 3 Pull the top thread tail out from underneath the foot.



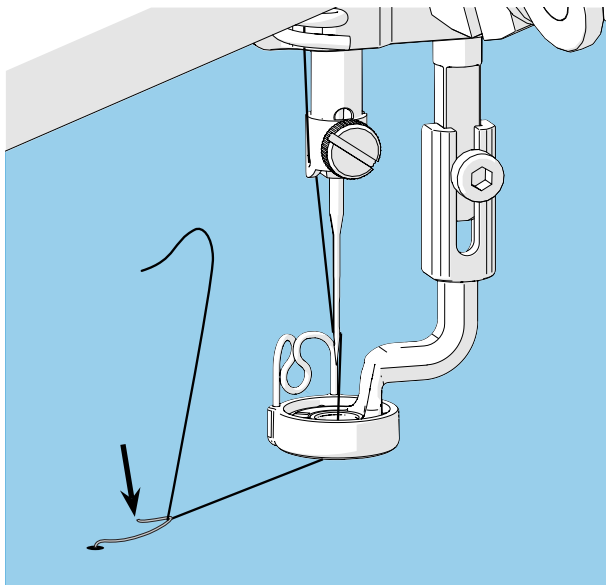
Couching (continued)

- 4 Hold the top thread tail and continue moving the machine from the original stitch until a **loop of bobbin thread** is pulled up.



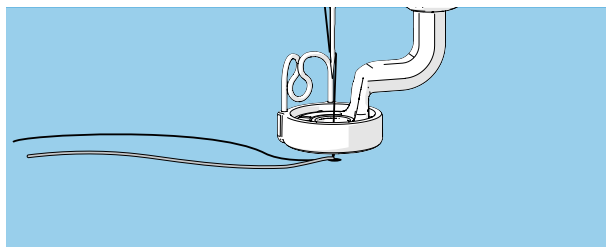
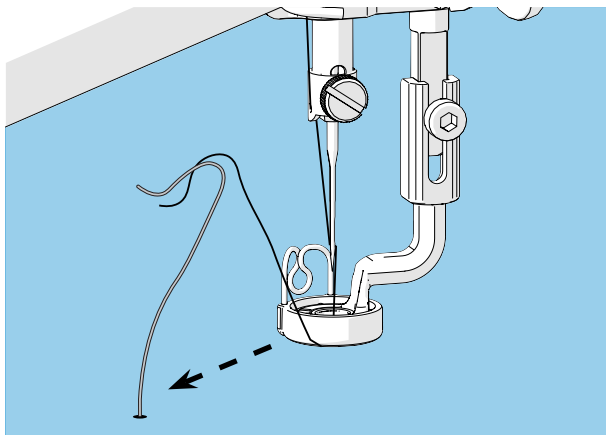
Couching (continued)

- 5 Pull until the bobbin tail completely pops up.



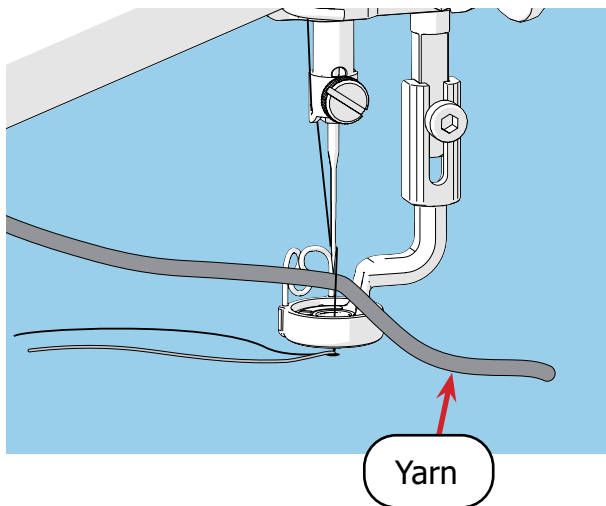
Couching (continued)

- 6 Hold both tails and move the machine so the needle is above the original stitch.



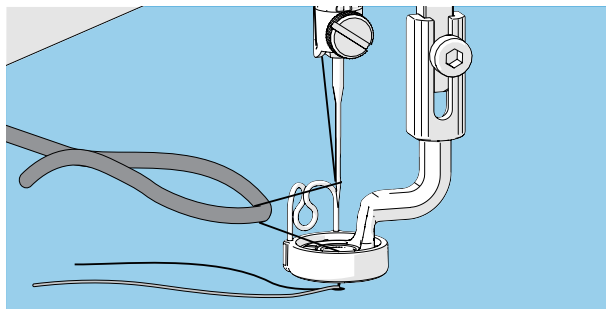
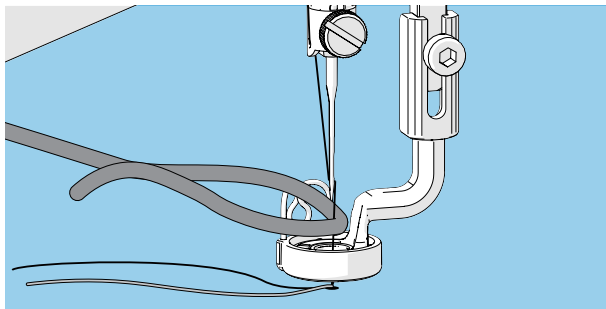
Couching (continued)

- 7 Tuck the tail of **yarn** between the needle and the hopping foot.



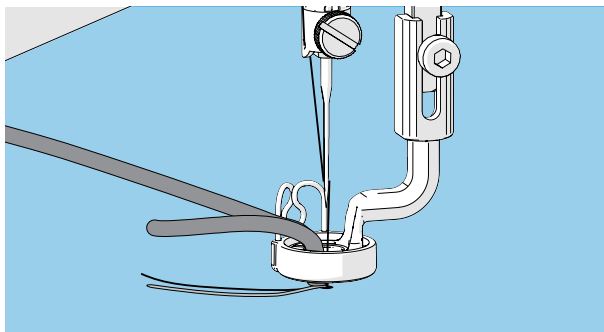
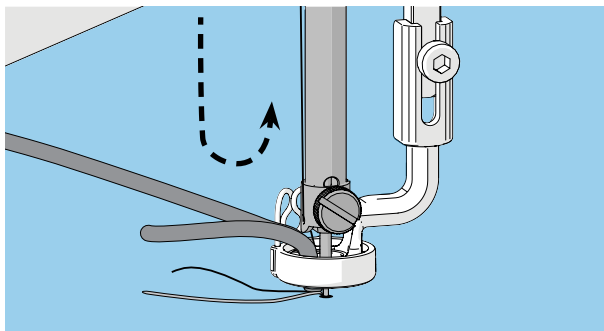
Couching (continued)

- 8 Make a loop with the yarn tail and lasso the top thread coming down from the needle. Pull the thread toward you, in front of the needle.



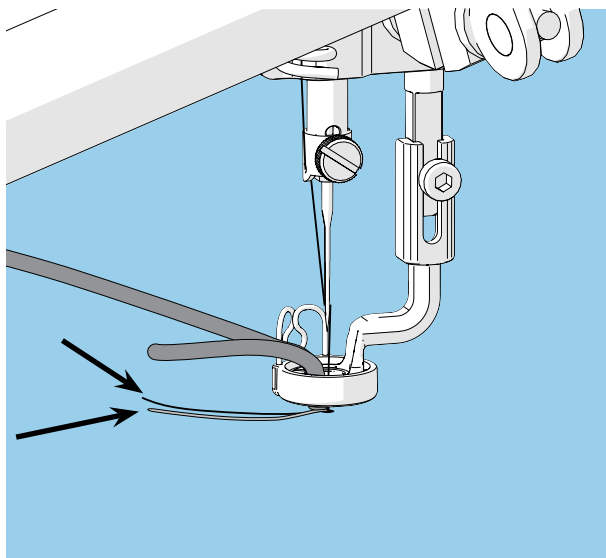
Couching (continued)

- 9 While holding the yarn loop loosely, make a single stitch to anchor the yarn.



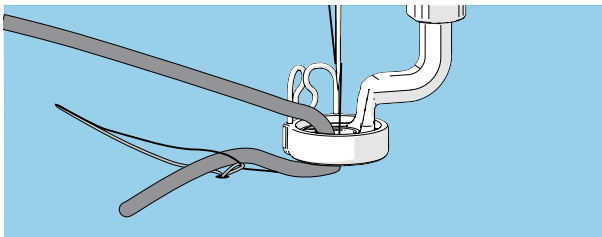
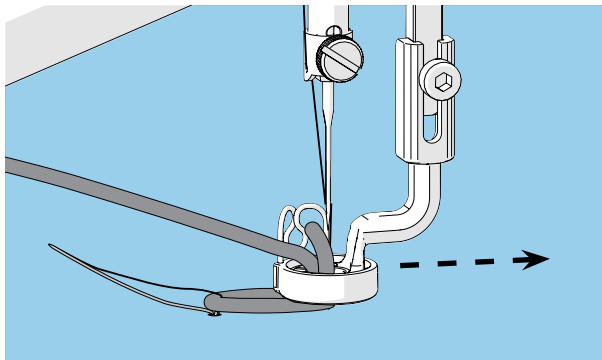
Couching (continued)

- 10 Grab the two machine thread tails. Hold them tightly.



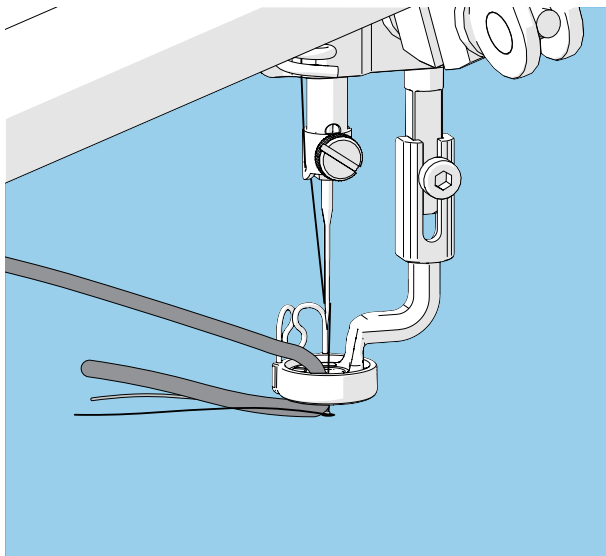
Couching (continued)

- 11 Pull the machine away from the last stitch until a loop of yarn pops through the bottom of the hopping foot. Pull the tail of the yarn all the way through.



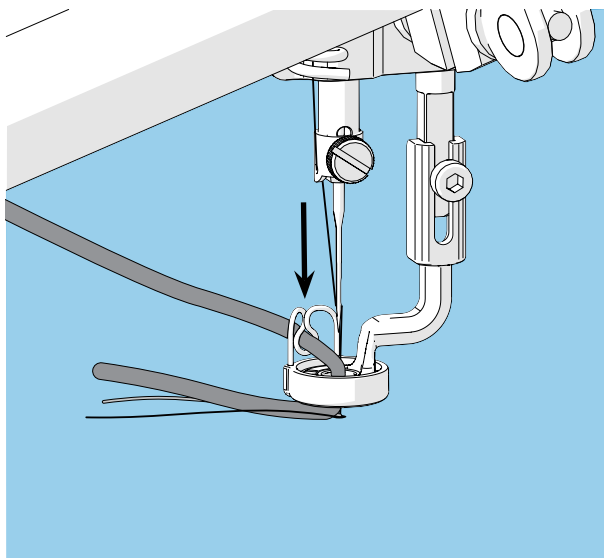
Couching (continued)

- 12 Gather up the yarn tail and the two thread tails and move the machine back to the first stitch. Pull out any slack in the tails as you move the machine.



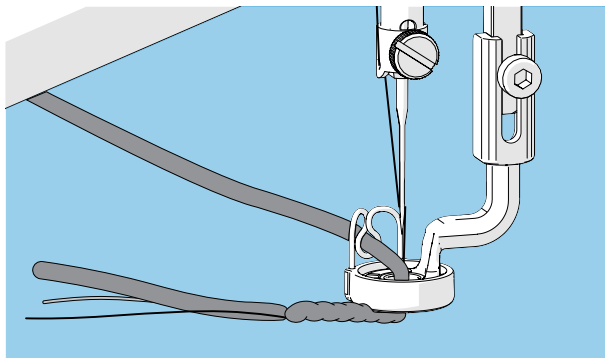
Couching (continued)

- 13 Take the yarn that is on top of the couching foot and tuck it into the wire guide.



Couching (continued)

- 14 You can now start quilting! Take care not to stitch in place too often. Check your work as you go to make sure your stitches are anchoring down the yarn.



Tip: Stitch slowly, especially around curves and corners. Watch the tension on the ball of yarn. There needs to be enough slack in the yarn for the machine to properly stitch it down.

Grace
COMPANY

www.graceframe.com

1-800-264-0644