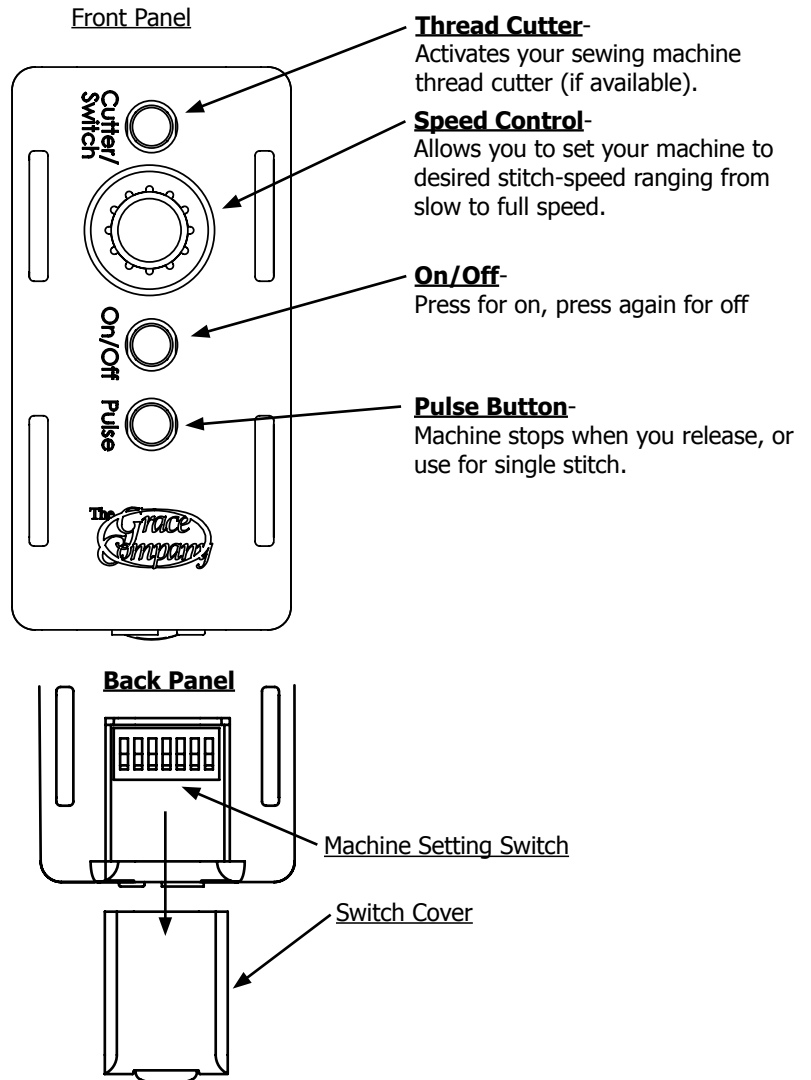
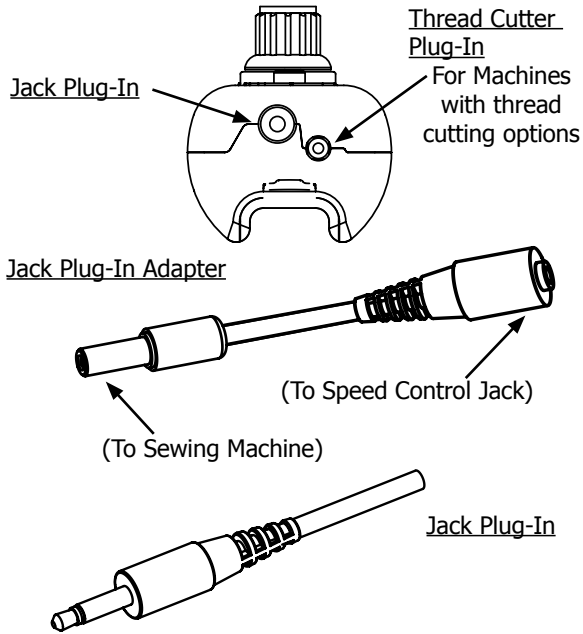


Grace Speed Control

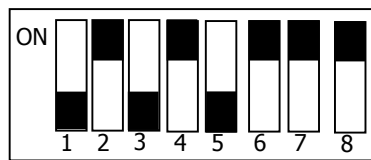
The Grace Speed Control is designed to work with almost any sewing machine.

Connecting to your sewing machine:



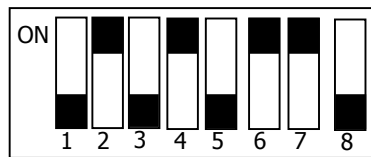
Setting 1

Janome 6500
Brother PQ1500S
BabyLock (Pre-2006)
black indicates switch position



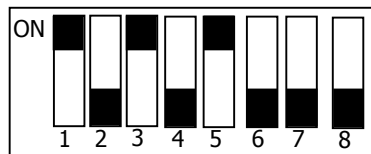
Setting 2

Brother PQ1500S,
BabyLock (Post 2006)
black indicates switch position



Setting 3

Bernina 153
black indicates switch position



Setting 4

Janome Horizon
black indicates switch position



Troubleshooting:

Sewing Machine does not turn on:

Verify cable is plugged in.
Verify dip switch settings.
Replace cable.

For Technical Assistance
please contact:

The Grace Company
1-800-264-0644

The Grace Speed Control Switch is compatible with most DC-powered machines. DC-powered machines usually have a separate foot pedal plug in and power cord plug in.