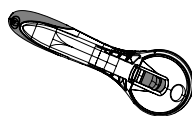


StraightCut

Included Parts

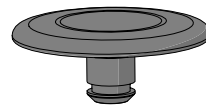
(Some parts pre-assembled)



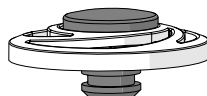
Handle
TC-09-1463



60 mm Blade
TC-08-1103



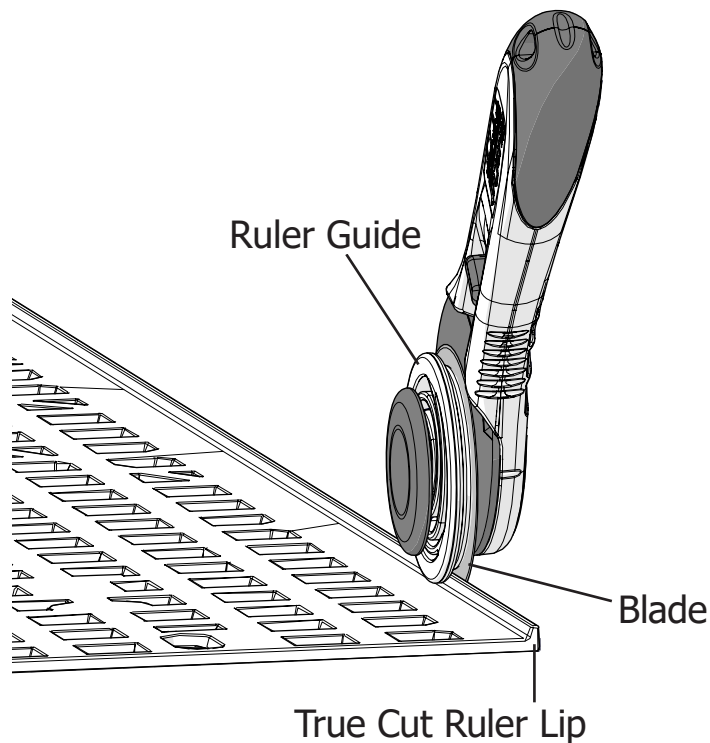
Guide Pin
TC-05-1457



Pin
TC-09-1494



Ruler Guide
TC-05-1454

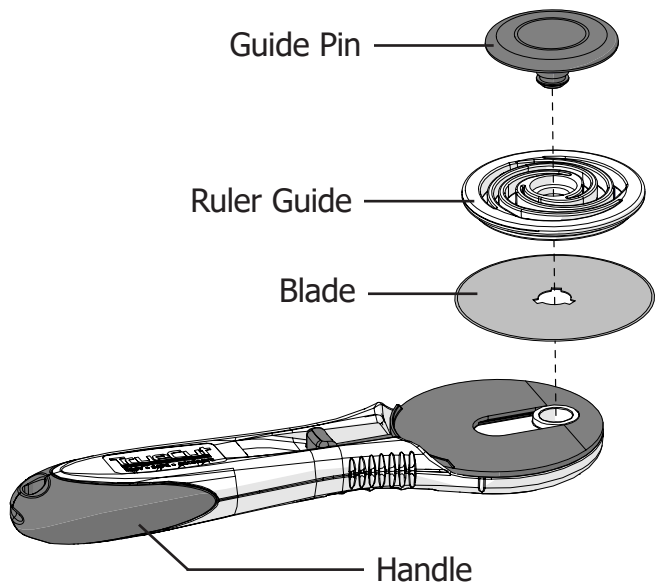


TrueCut

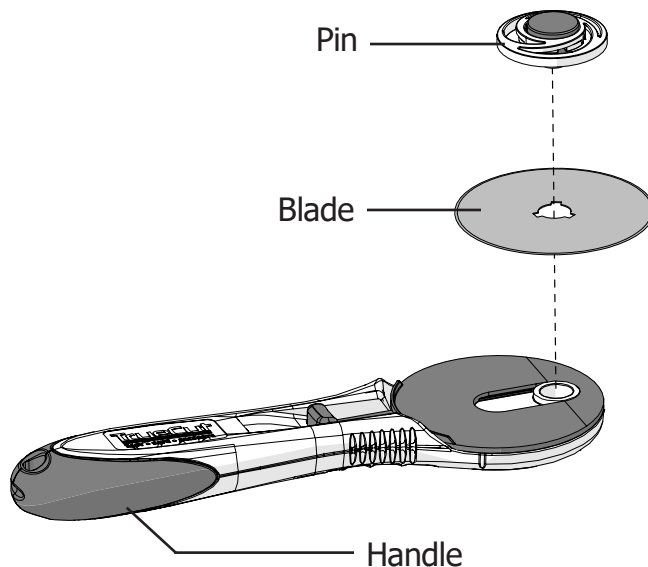
EASY • SAFE • ACCURATE

Configurations

Can be set up with or without the ruler guide.



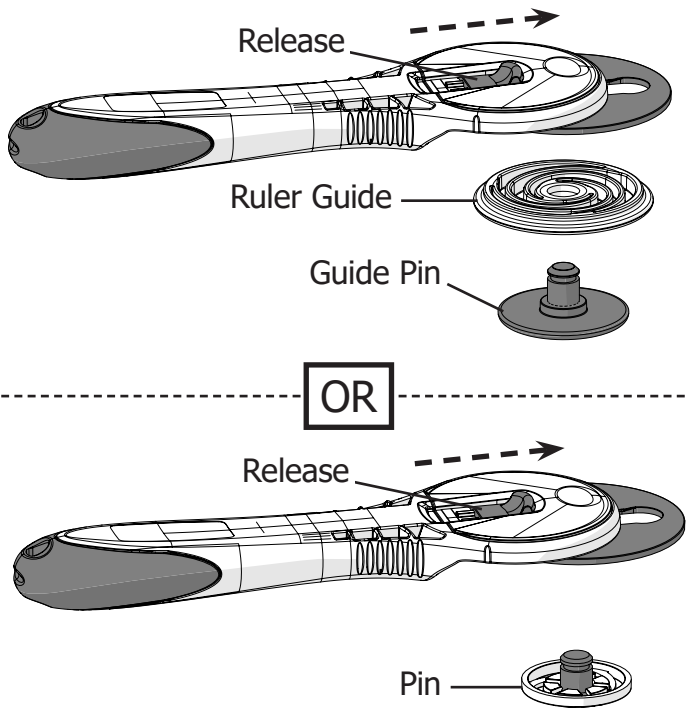
Pictured: With Ruler Guide



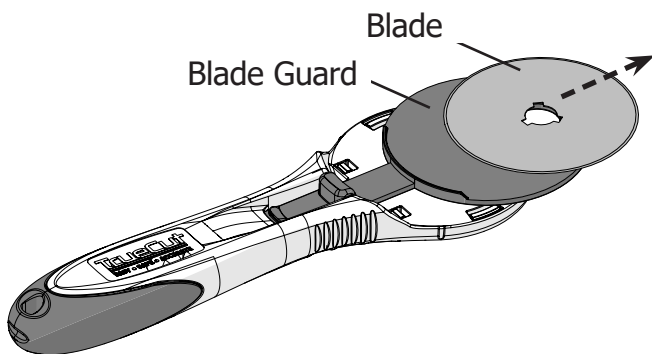
Pictured: Without Ruler Guide

Changing the Blade

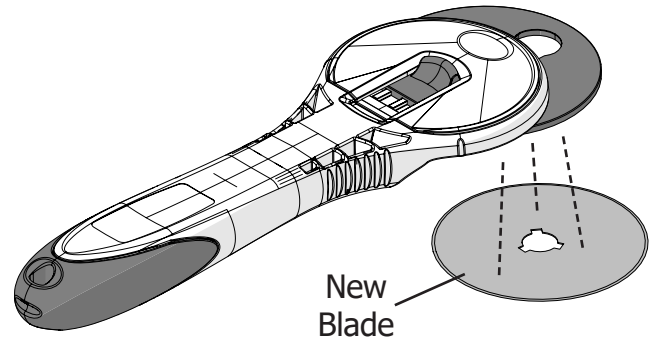
1 Push out the **release** to drop the **pin**.



2 Carefully slide the **blade** off the **blade guard**.



3 Position the handle over the **new, sharp blade**. The magnet will pick it up.



4 Press the **pin** into the handle until it clicks in place.

