

Pattern Perfect Assembly & Use Manual

Grace
COMPANY

Contents

Included Parts and Tools	ii	Task 5: Stitching Out Rows	23
Task 1: Setting Up the Stylus	4	User Tips	28
Task 2: Installing the Bracket	5	Template Guide Design Examples	28
Q'nique Machine Bracket Installation.....	6		
Cutie Frame Bracket Installation.....	10		
Cutie Breeze Frame & Chariot Top Plate Bracket Installation.....	12		
G-Series 1 & 2 Top Plate Bracket Installation....	13		
Task 3: Preparing Your Work Area	18		
Task 4: Installing the Templates.....	19		

Copyright © 2023 Grace Company. All rights reserved. Grace Company reserves the right to make improvements and changes to the product described in this publication at any time and without notice, and may revise this publication occasionally without notice.

Grace Company provides this publication “as-is.” While every attempt at accuracy and clarity has been made in the preparation of this manual and its representation of the product, the publisher and author assume no responsibility for errors, omissions, or any damages as a result of said errors or omissions.

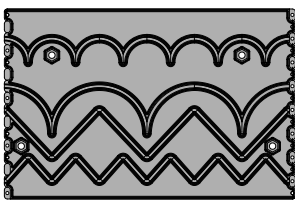
All brand names, publishing activities and trademarks used in this publication are the trademarks, service marks, or trade names of their respective holders.

First Published: September 20, 2018

Last Updated: June 17, 2024

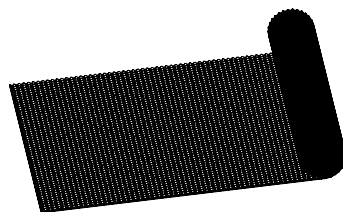
Included Parts and Tools

**Pattern Perfect
Template (x10)**



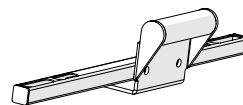
PLA-05-12372

Non-Skid Mat



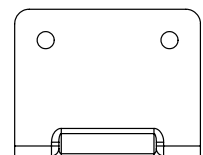
MIS-08-12381

**Pattern Perfect
Bracket**



MET-04-11017

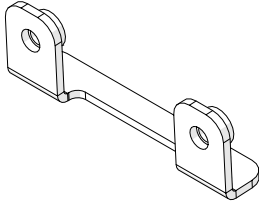
Top Plate Bracket



MET-04-10297

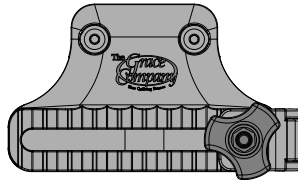
Included Parts and Tools (continued)

**Chariot Top Plate Pattern
Perfect Mounting Bracket**



ACC-04-18607

Stylus Bracket



PLA-05-12373

Stylus



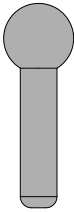
HDW-03-12379

M6 Knob (x3)



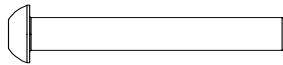
PLA-05-10320

Pin (x30)



PLA-05-12380

**SBHCS M6 x 55 mm
(x2)**



HDW-03-10725

**SBHCS M5 x 55 mm
(x2)**



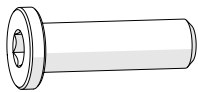
HDW-03-15446

**Hex Bolt M6 x 40 mm
(x3)**



HDW-03-10808

**Ultra Low-Profile SHCS
M6 x 20 mm (x2)**



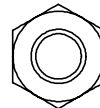
HDW-03-18183

**SBHCS M6 x 10 mm
(x2)**



HDW-03-10124

Hex Nut M6 (x4)



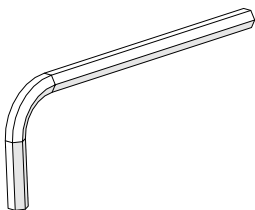
HDW-03-10085

**Open-end Wrench
10 mm & 13 mm**



HDW-03-10743

Allen Wrench 4 mm

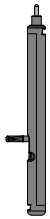


HDW-03-10167

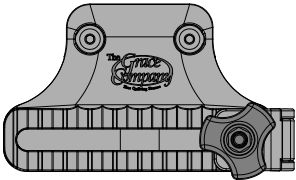
Task 1: Setting Up the Stylus

Parts & Tools Needed:

Stylus



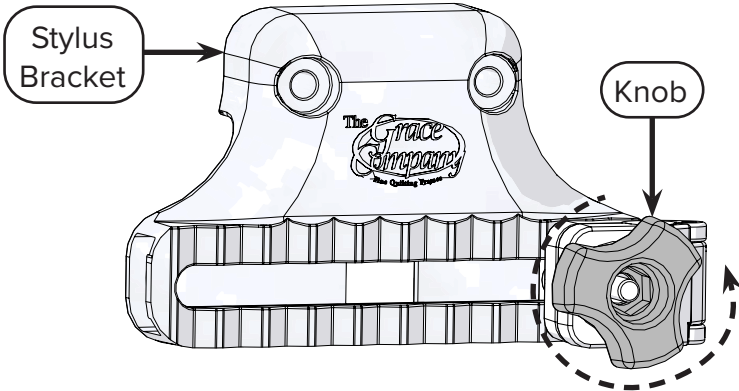
Stylus Bracket



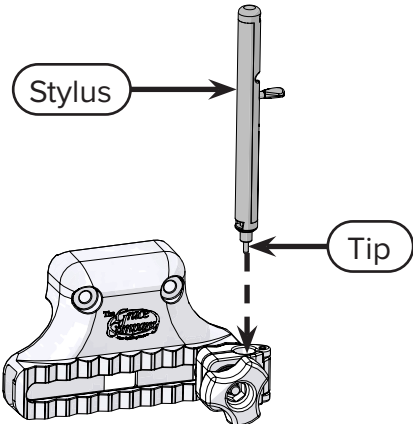
Instructions

Take the following steps to set up the stylus for use:

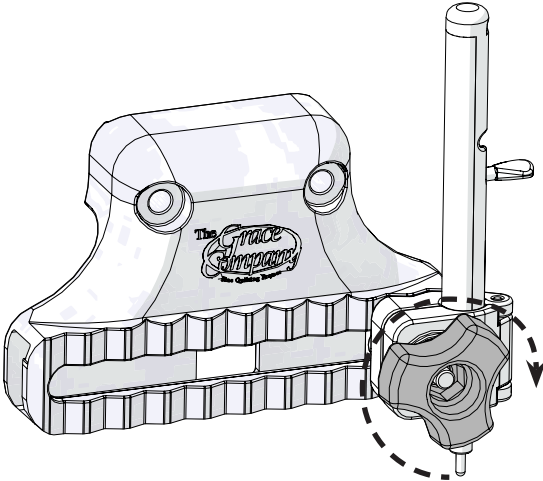
- 1 Loosen the **knob** on the **stylus bracket**. You don't need to fully remove the knob from the bracket.



- 2 Slide the **stylus** into the stylus holder, with the **tip** pointing down.



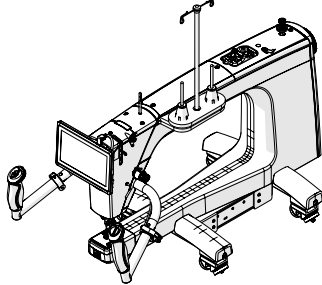
- 3 Tighten the knob.



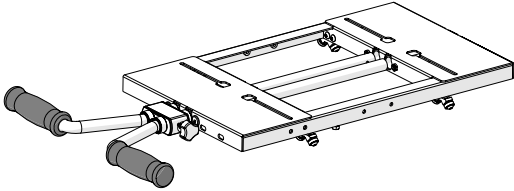
Task 2: Installing the Bracket

The process of installing the bracket depends on what setup you are using. Locate your setup in the list below, and then go to that page for instructions on installing the bracket.

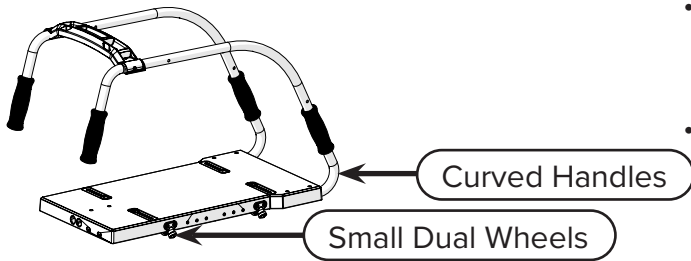
Note: For all setups, you can install the bracket on either the left or the right side.



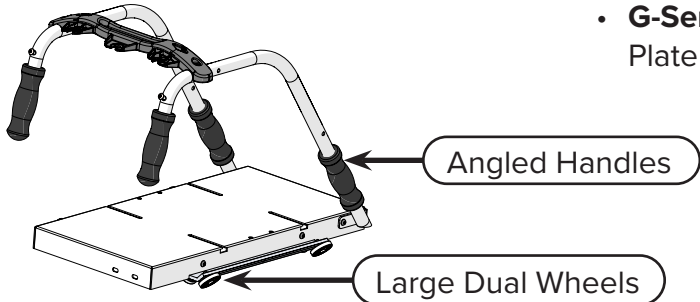
- **Q'nique Machine (15-inch, 16-inch, 19-inch, or 21-inch):** See “Q'nique Machine Bracket Installation” on page 6.



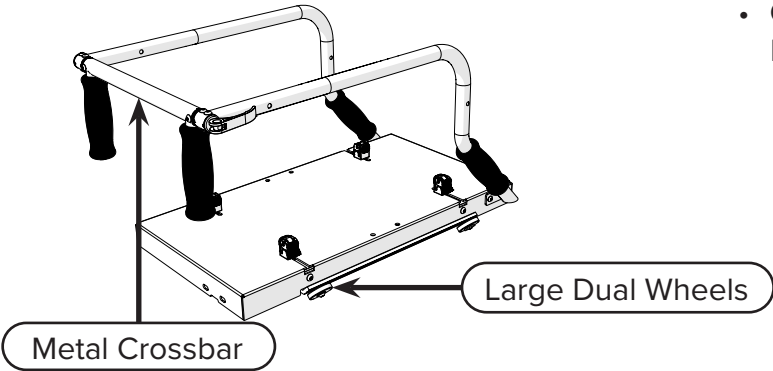
- **Cutie Frame:** See “Cutie Frame Bracket Installation” on page 10.



- **Cutie Breeze Frame:** See “Cutie Breeze Frame & Chariot Top Plate Bracket Installation” on page 12.
- **Chariot Top Plate:** See “Cutie Breeze Frame & Chariot Top Plate Bracket Installation” on page 12.



- **G-Series 1 Top Plate:** See “G-Series 1 & 2 Top Plate Bracket Installation” on page 13.



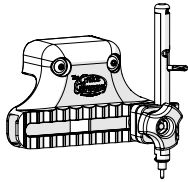
- **G-Series 2 Top Plate:** See “G-Series 1 & 2 Top Plate Bracket Installation” on page 13.

Task 2: Installing the Bracket (continued)

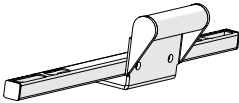
Q'nique Machine Bracket Installation

Parts & Tools Needed:

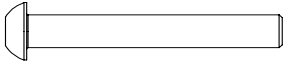
Assembled Stylus Bracket



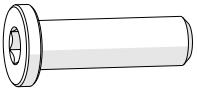
Pattern Perfect Bracket



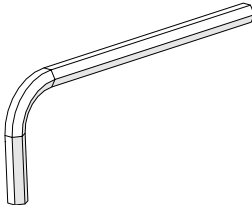
SBHCS M6 x 55 mm (x2)



Ultra Low-Profile SHCS M6 x 20 mm (x2)

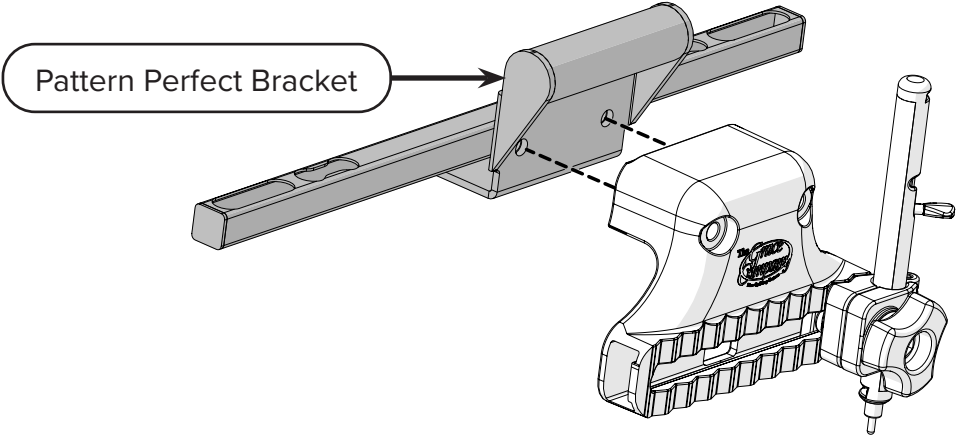


Allen Wrench 4 mm



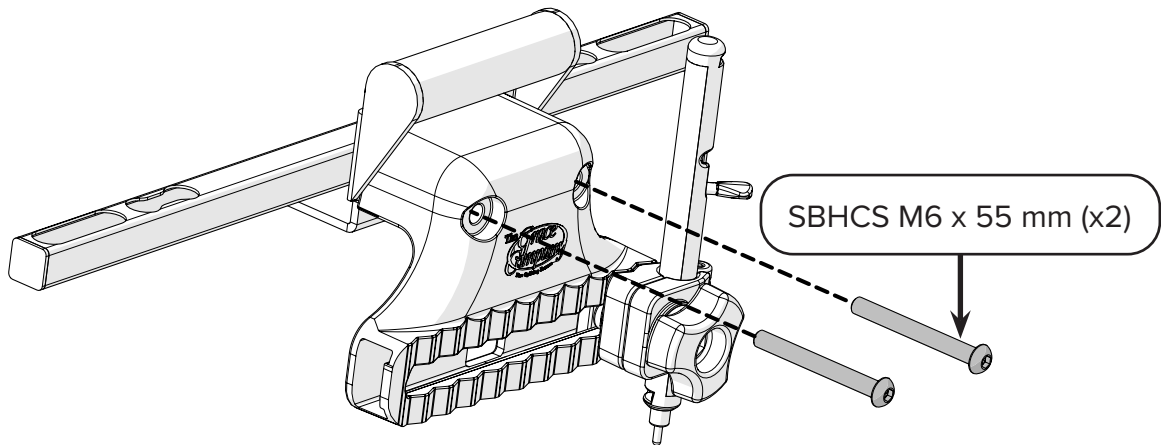
For all Q'nique machines (including the 15-inch, 16-inch, 19-inch, and 21-inch machines), take the following steps to install the bracket on the machine:

- 1 First, do the following to attach the stylus bracket to the Pattern Perfect bracket:
 - a Line up the holes in the stylus bracket with the holes in the **Pattern Perfect bracket**.

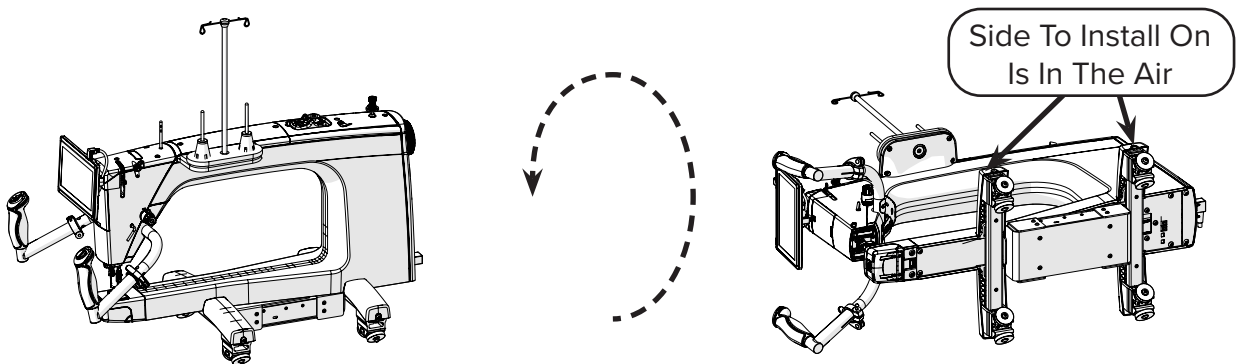


Task 2: Installing the Bracket (continued)

- b Insert two **M6 x 55 mm SBHCS** in the holes, and tighten them with the 4 mm Allen wrench.

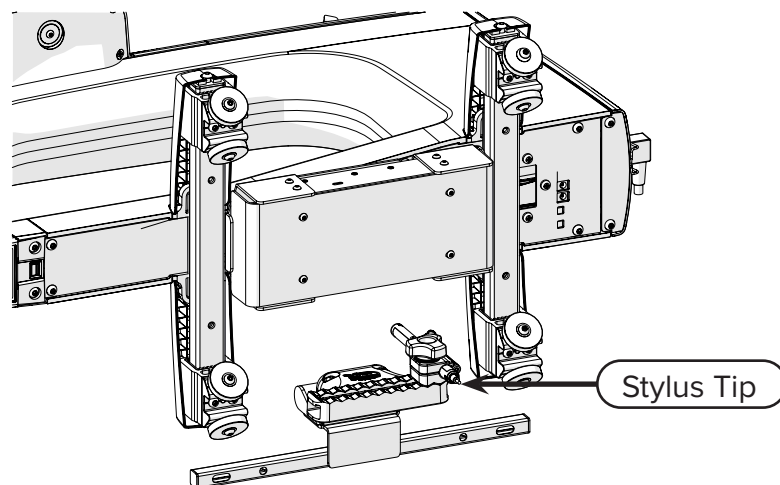


- 2 Move your machine *off your frame*, and then *gently tip your machine onto its side*, so that the **side you want to install the bracket on is in the air**. **Note:** If you are concerned that putting the machine on its side might break part of it (for example, the thread mast) then remove that piece before you tip the machine. See your machine manual for more information about the pieces on your machine.



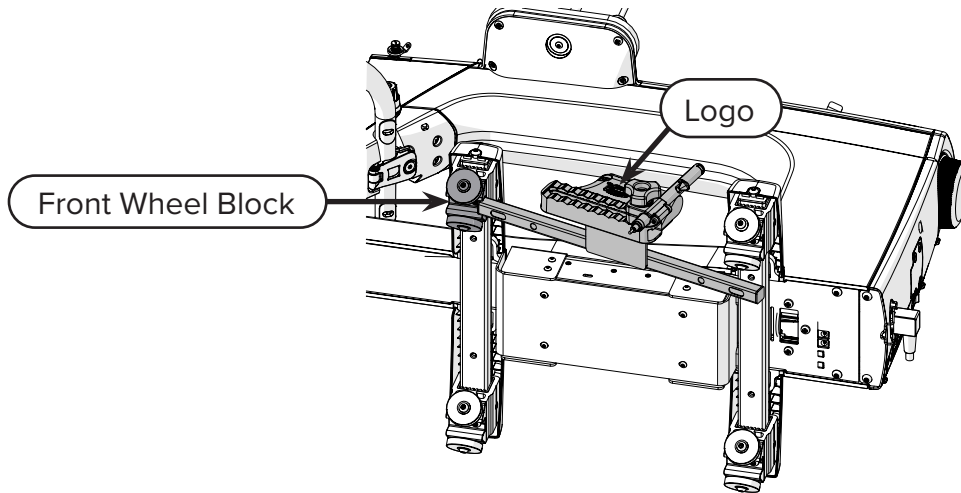
- 3 Orient the bracket so that the **stylus tip** points away from the machine.

Note: If you have a single-wheel 15-inch machine, then skip steps 4–5. If your 15-inch machine has a dual-wheel setup, then follow all the steps.

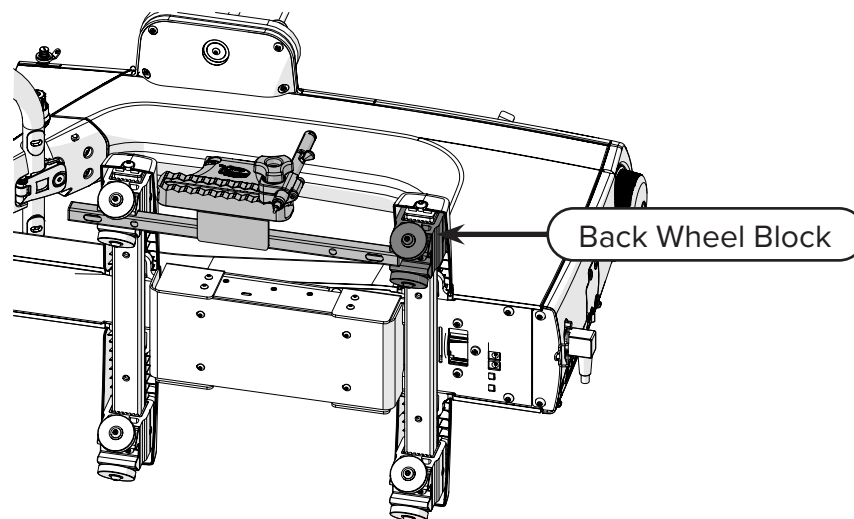


Task 2: Installing the Bracket (continued)

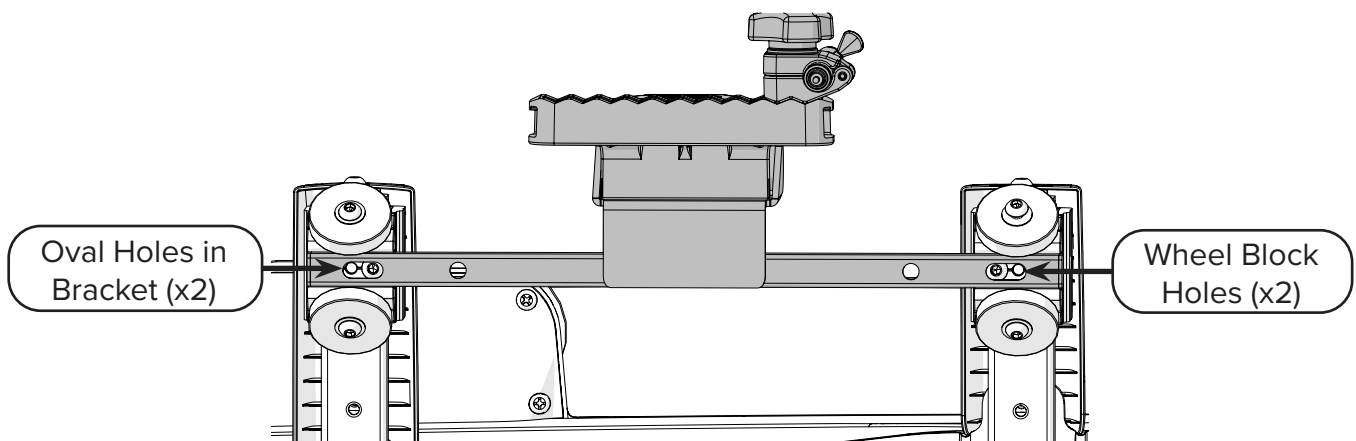
- 4 Slide the Pattern Perfect bracket in between the wheels at an angle from the back of the **front wheel block**. Make sure the Grace Company **logo** faces away from the machine.

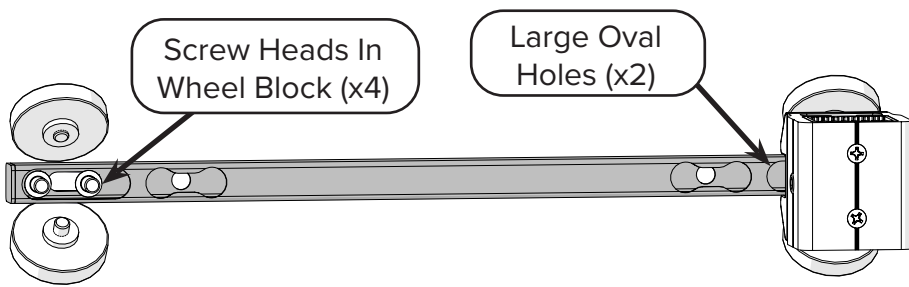


- 5 Slide the bracket forward until you can place the other side in the **back wheel block**.



- 6 Line up the **oval holes** on the underside of the bracket with the **holes in the wheel blocks**. Pay attention to where the other screws are in the wheel blocks. When the **screw heads in the wheel block** fit in the **large oval holes** on the top side of the bracket, the bracket is in the correct spot.

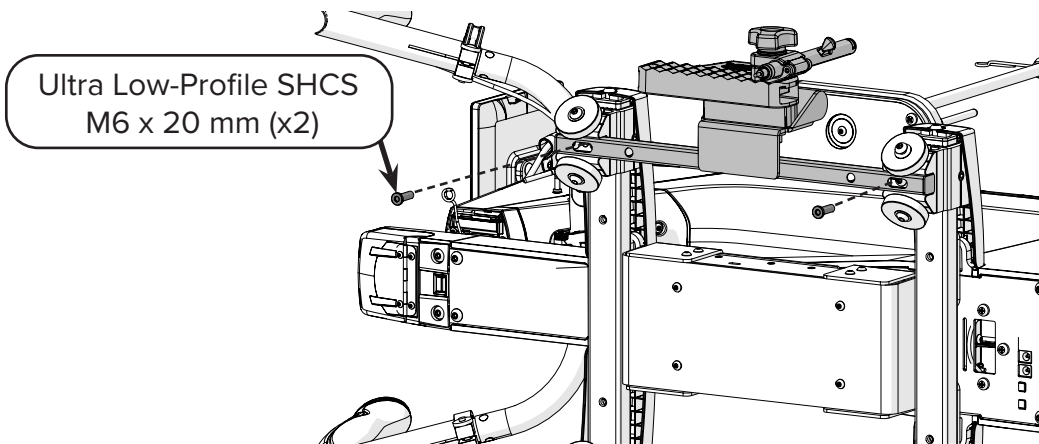




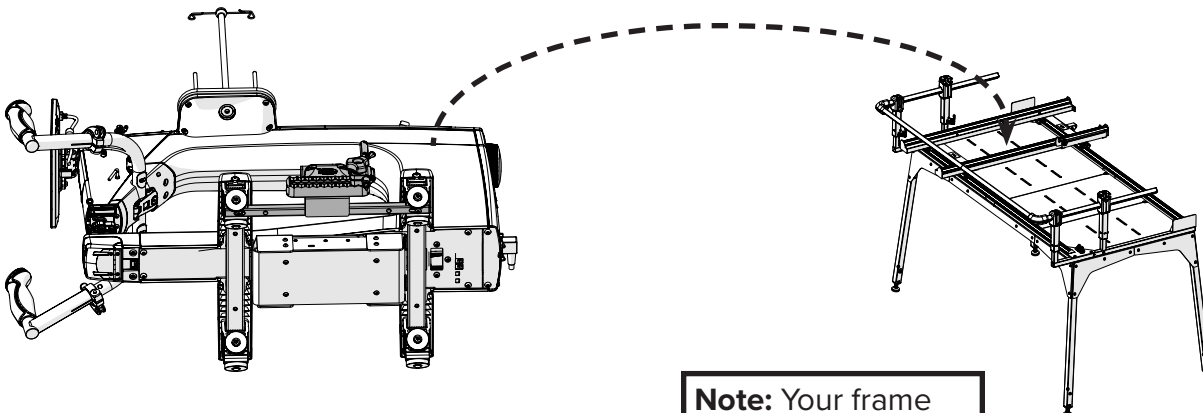
Note: This image shows what is going on with just the bracket and the screw heads. *Do not* take your Pattern Perfect bracket or machine wheel block apart!

X-Ray View Through Wheel Block

- 7 Using the 4 mm Allen wrench, screw two **M6 x 20 mm Ultra Low-Profile SHCS** into the holes in the wheel blocks. **Tip:** Don't fully tighten the first screw until you have made sure that both sides of the bracket are lined up with the screw heads in the wheel blocks.



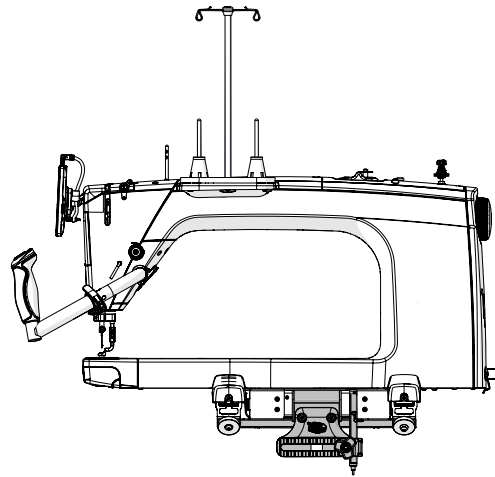
- 8 Place the machine back on your frame.



Note: Your frame might vary from the example frame.

Task 2: Installing the Bracket (continued)

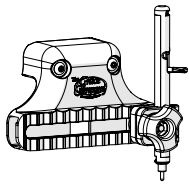
9 **Task Result:** The bracket is installed on your Q'nique machine.



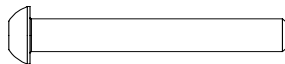
Cutie Frame Bracket Installation

Parts & Tools Needed:

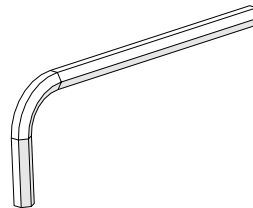
Assembled Stylus
Bracket



SBHCS M5 x 55 mm
(x2)

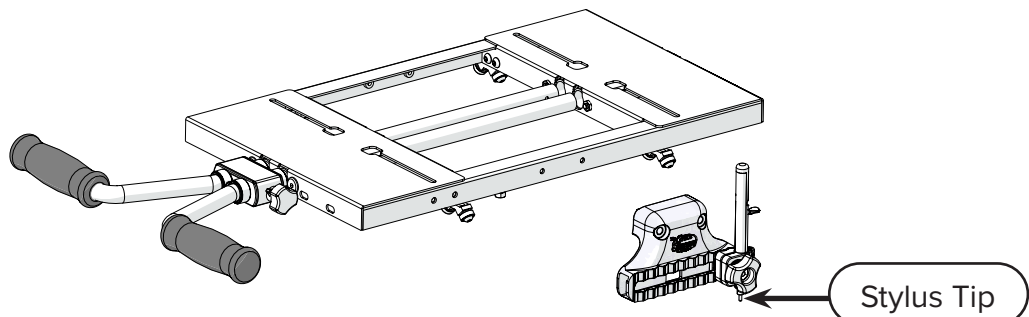


Allen Wrench 4 mm



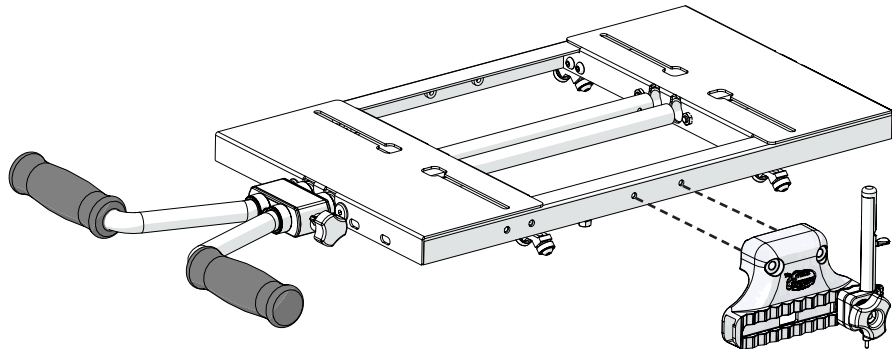
For the Cutie frame, take the following steps to install the bracket on the top plate:

- 1 Orient the stylus bracket so that the **stylus tip** will point toward the frame (down) when you're finished installing it.

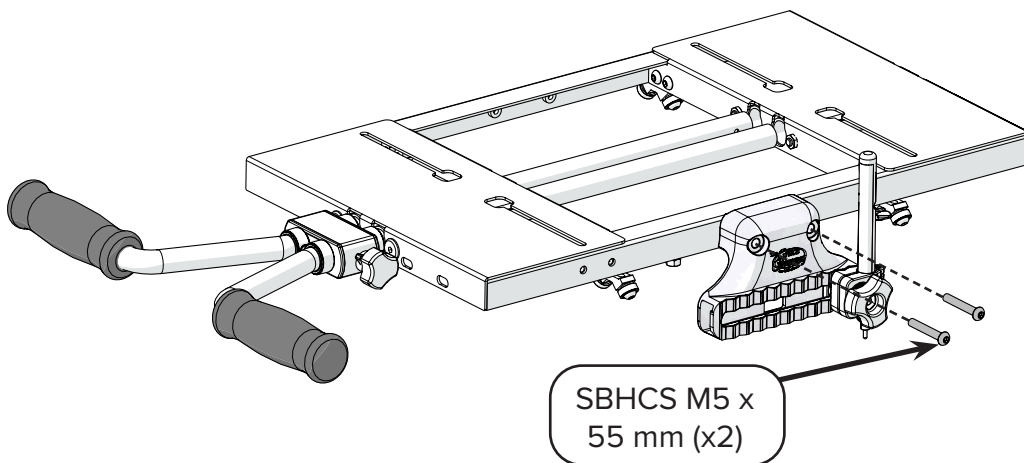


Task 2: Installing the Bracket (continued)

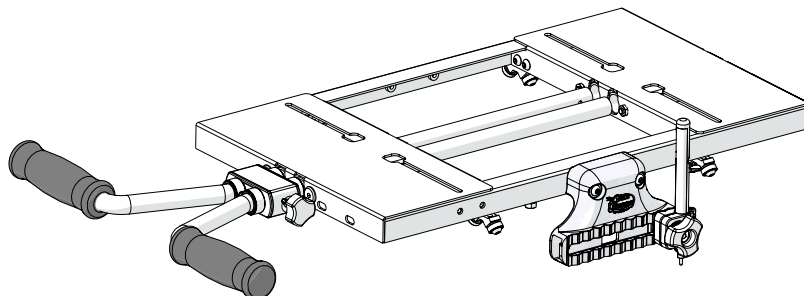
- 2 Line up the holes in the stylus bracket with the holes on the side of the top plate, near the middle.



- 3 Using the 4 mm Allen wrench, screw two **M5 x 55 mm SBHCS** into the holes to secure the bracket.



- 4 **Task Result:** The stylus bracket is installed on the top plate. Install the top plate back onto your frame if needed.

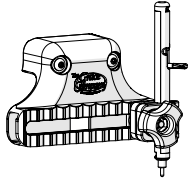


Task 2: Installing the Bracket (continued)

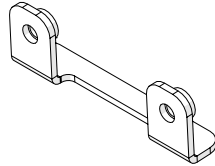
Cutie Breeze Frame & Chariot Top Plate Bracket Installation

Parts & Tools Needed:

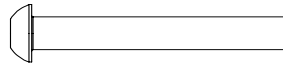
Assembled Stylus Bracket



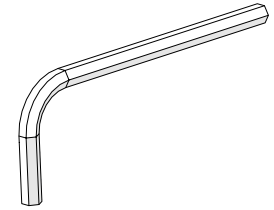
Chariot Top Plate Pattern Perfect Mounting Bracket



SBHCS M5 x 55 mm (x2)

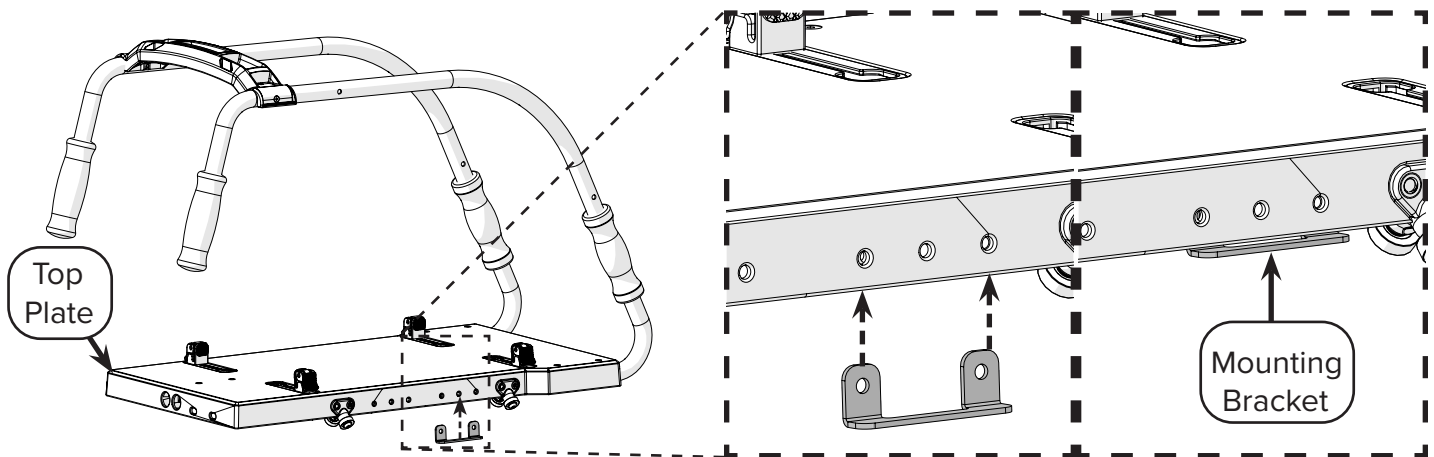


Allen Wrench 4 mm

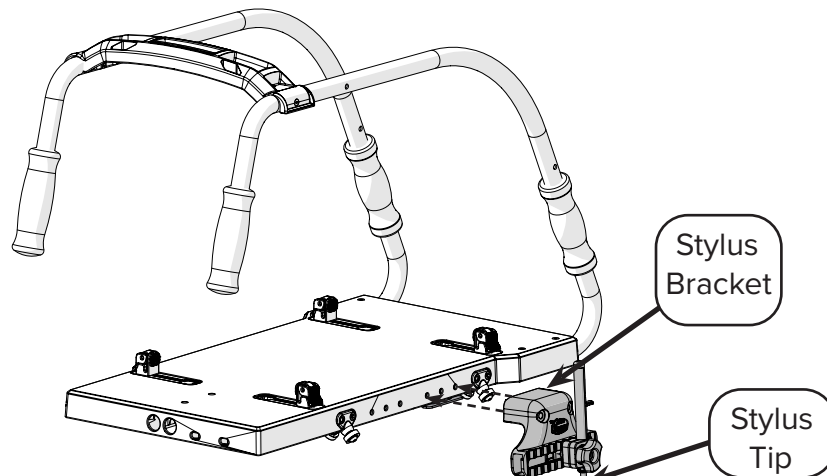


For the Cutie Breeze frame or the Chariot top plate, take the following steps to install the bracket on the top plate:

- 1 Slide the Chariot top plate Pattern Perfect **mounting bracket** behind two of the holes on the **top plate**. It doesn't matter which holes you pick, as long as you can line up both of the holes in the top plate with the holes in the bracket.

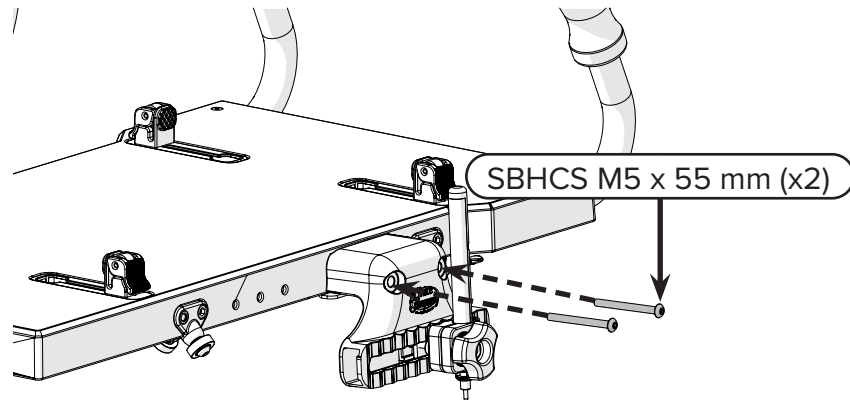


- 2 Orient the **stylus bracket** so that the **stylus tip** will point toward the frame (down) when you're finished installing it. Line it up with the mounting bracket.

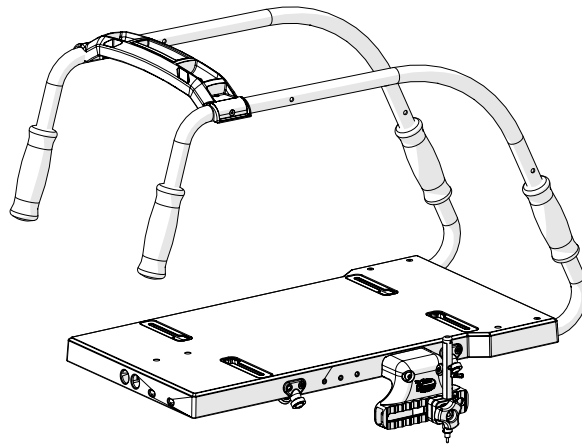


Task 2: Installing the Bracket (continued)

- 3 Use the 4 mm Allen wrench and two **M5 x 55 mm SBHCS** to hold the stylus bracket and the mounting bracket to the top plate.



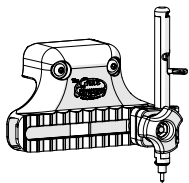
- 4 **Task Result:** The stylus bracket is installed on the top plate. Install the top plate back onto your frame if needed.



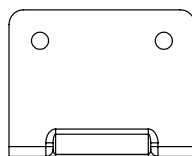
G-Series 1 & 2 Top Plate Bracket Installation

Parts & Tools Needed:

Assembled
Stylus Bracket



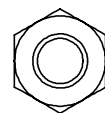
Top Plate
Bracket



SBHCS M6 x 55 mm
(x2)

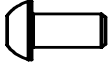


Hex Nut M6 (x4)

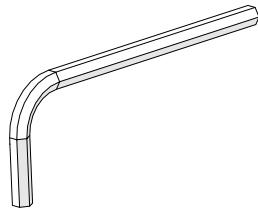


Task 2: Installing the Bracket (continued)

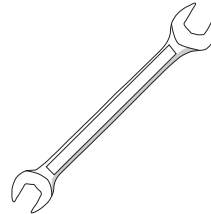
SBHCS M6 x 10 mm
(x2)



Allen Wrench 4 mm



Open-end Wrench
10 mm & 13 mm

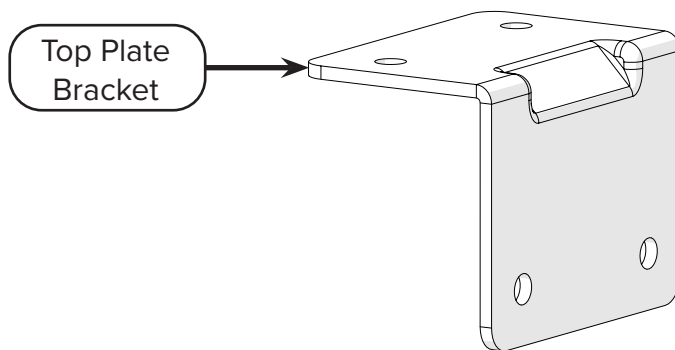


For the G-Series 1 or 2 top plate, take the following steps to install the bracket on the top plate.

Note: The images in this task show the G-Series 2 top plate, but the process is the same.

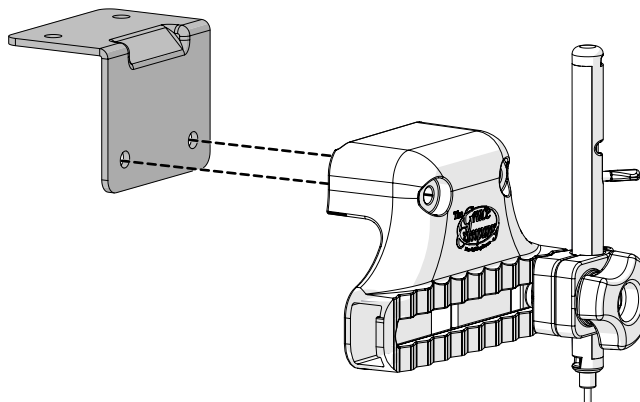
1 First, do the following to attach the stylus bracket to the top plate bracket:

- a Orient the **top plate bracket** so that the smaller side of the bracket is horizontal, while the larger side of the bracket hangs down vertically from it.



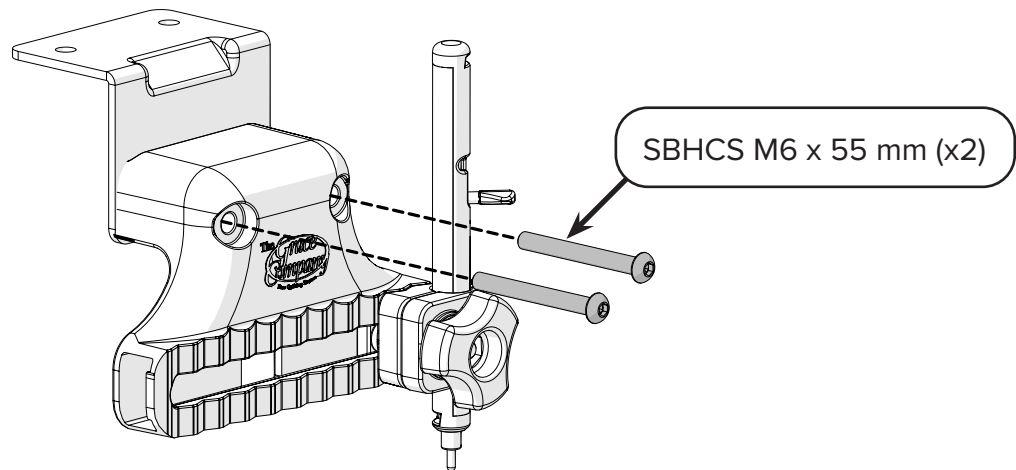
Note: Orient the top plate bracket so that the larger side is vertical.

- b Line up the holes in the stylus bracket with the holes in the larger side of the top plate bracket. Make sure the other part of the top plate bracket points away from the stylus bracket.

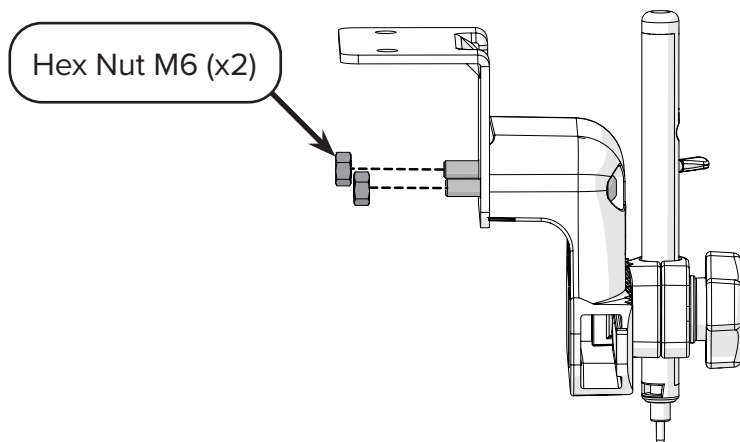


Task 2: Installing the Bracket (continued)

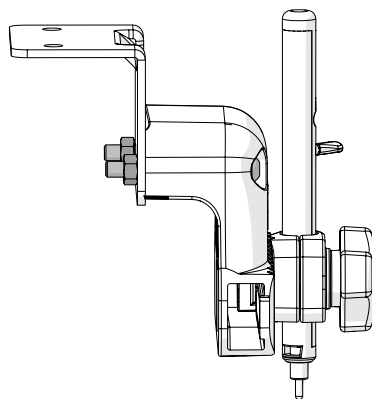
- c Insert an **M6 x 55 mm SBHCS** into each of the two holes.



- d Using your hand, start to tighten two **M6 hex nuts** onto the screws.

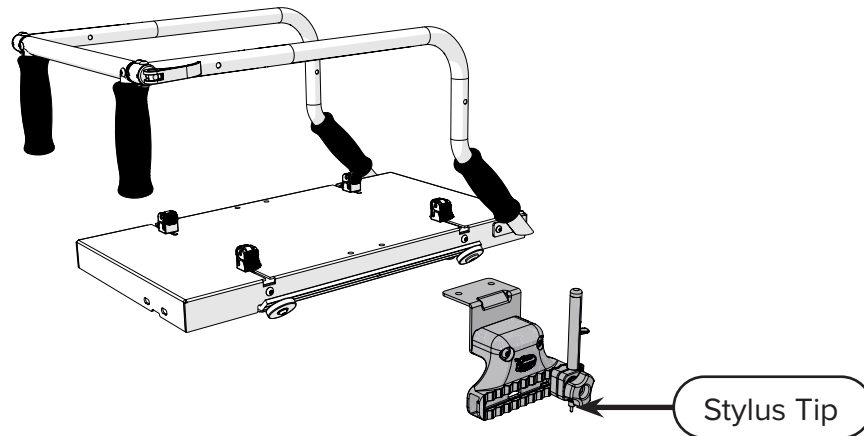


- e Once the nuts are on the screws, hold each nut with the 10 mm open-end wrench and tighten the screws with the 4 mm Allen wrench.

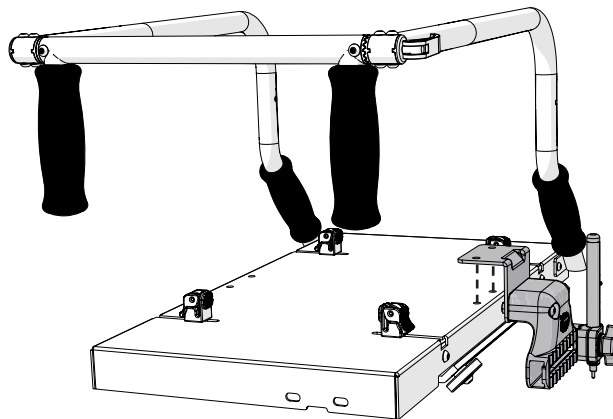


Task 2: Installing the Bracket (continued)

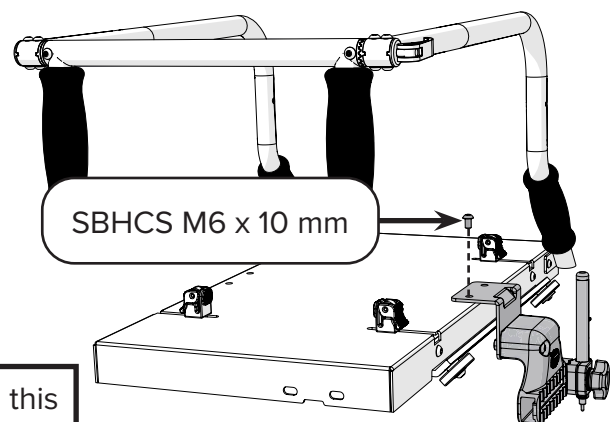
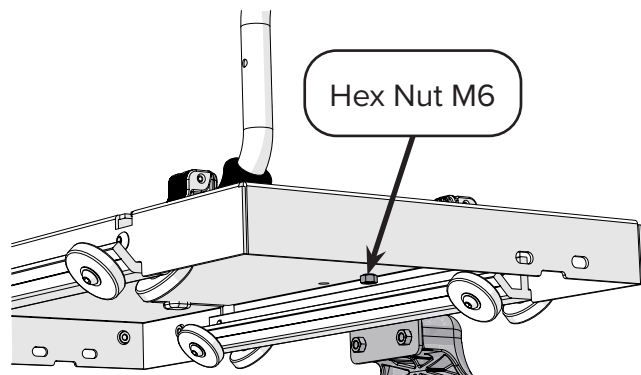
- 2 Orient the top plate stylus bracket so that the **stylus tip** will point toward the frame (down) when you're finished installing it.



- 3 Line up the holes in the top plate bracket with the holes that are near the side and close to the middle of the top plate.



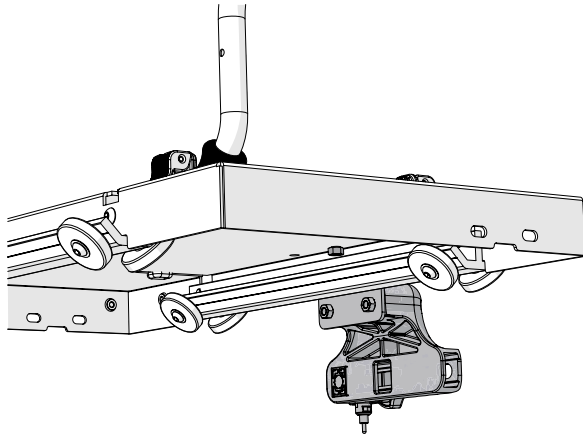
- 4 Using your hand, hold an **M6 hex nut** under one of the holes, and then use the 4 mm Allen wrench to insert an **M6 x 10 mm SBHCS** into the hole and begin tightening the screw.



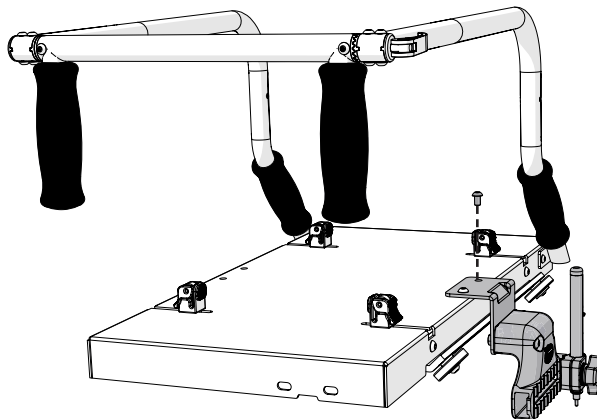
Note: You don't need to orient the top plate this way; this is just what is going on beneath the top plate carriage.

Task 2: Installing the Bracket (continued)

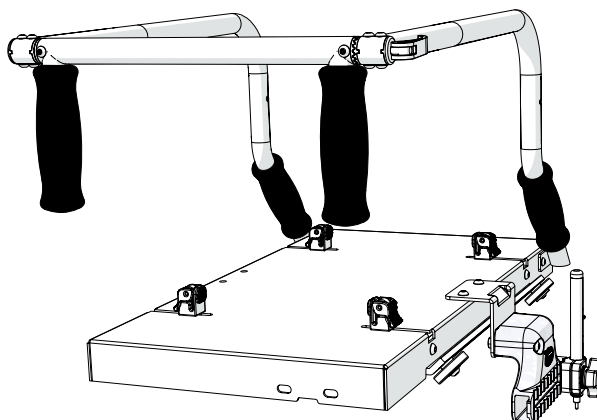
- 5 Once the nut is on the screw, use the 10 mm open-end wrench to hold the nut while you tighten the screw fully. **Tip:** Don't fully tighten the screw until you have made sure that both sides of the bracket are lined up with the holes.



- 6 Repeat steps 4–5 with another M6 hex nut and the other M6 x 10 mm SBHCS to secure the other side of the top plate bracket to the top plate.



- 7 **Task Result:** The top plate bracket is installed on the top plate. Install the top plate back onto your frame if needed.

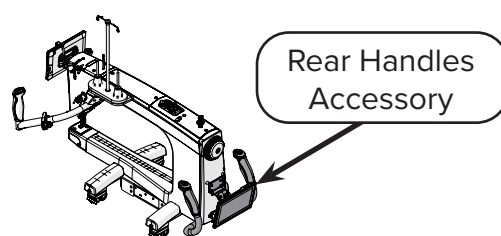
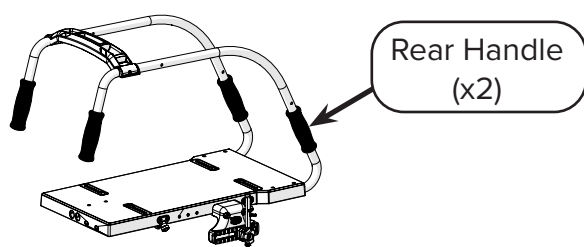


Task 3: Preparing Your Work Area

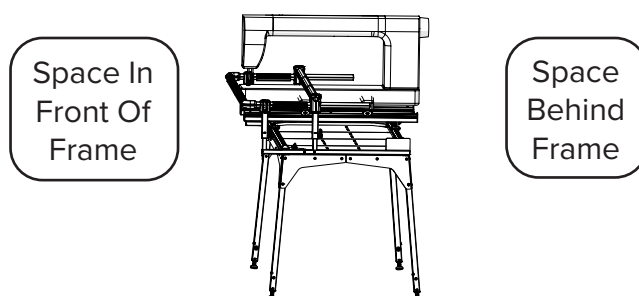
Before you install the templates on your frame, make sure that your work area is prepared for quilting with Pattern Perfect.

To prepare your work area, do the following:

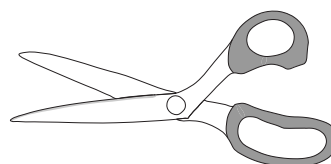
- 1 Make sure your machine or top plate has **rear handles**. Visit graceframe.com for more information about rear handles for your setup. **Note:** For the Cutie frame, you need to move your handles to the back. See the Cutie Frame manual for more information.



- 2 Make sure you can position yourself both in **front of and behind** your frame, and easily switch between the two positions. You will work from the front when you put the fabric on or adjust its position. You will work from the back when you are following the Pattern Perfect templates.

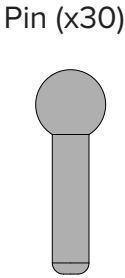
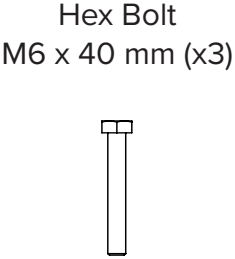
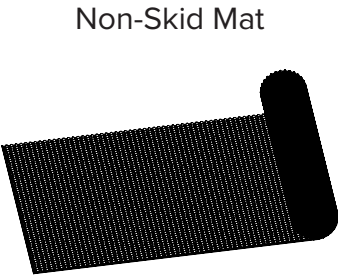
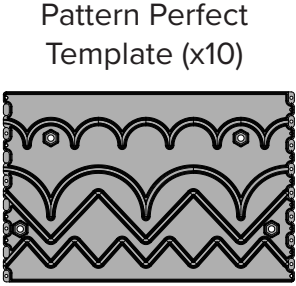


- 3 Make sure you have all of the quilting supplies you need for your frame or machine. For example, gather your quilt sandwich, your bobbins, your top thread, and your scissors. For more information, see your frame or machine manual.



Task 4: Installing the Templates

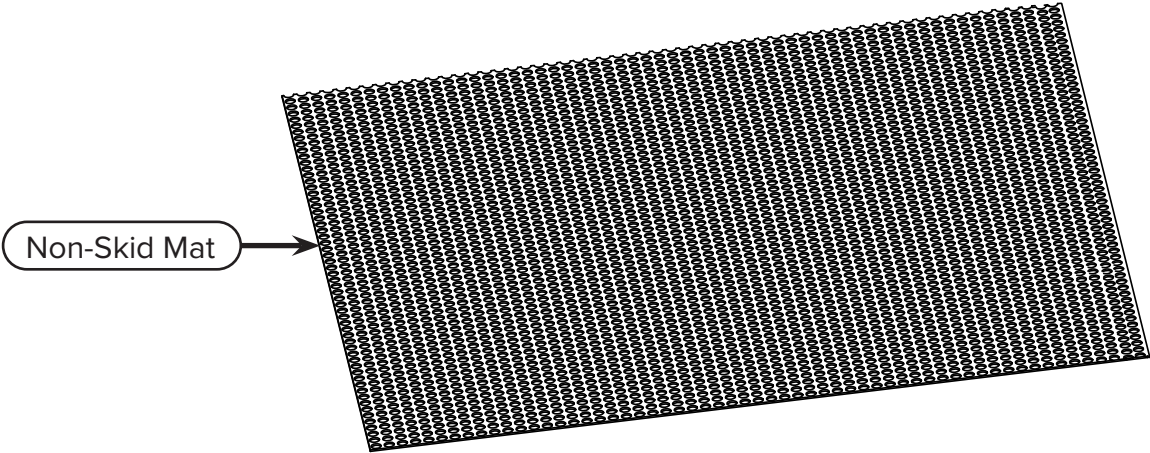
Parts & Tools Needed:



Instructions

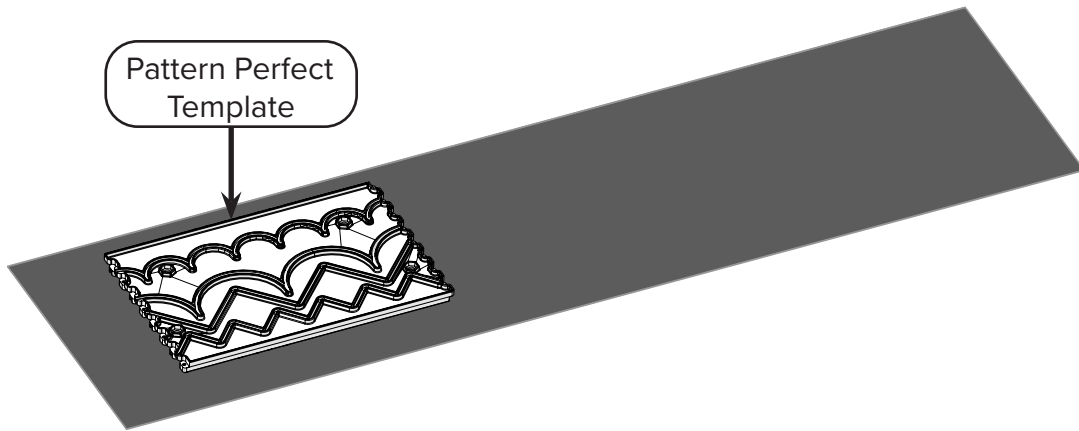
Once your work space is set up, you're ready to install the templates. You'll follow these steps every time you change which design you are working with. Take the following steps to install the templates:

- 1 Lay the **non-skid mat** on the tabletop of your frame, or if your frame doesn't have a tabletop, on the work surface under your frame. Smooth out any wrinkles until there are none.

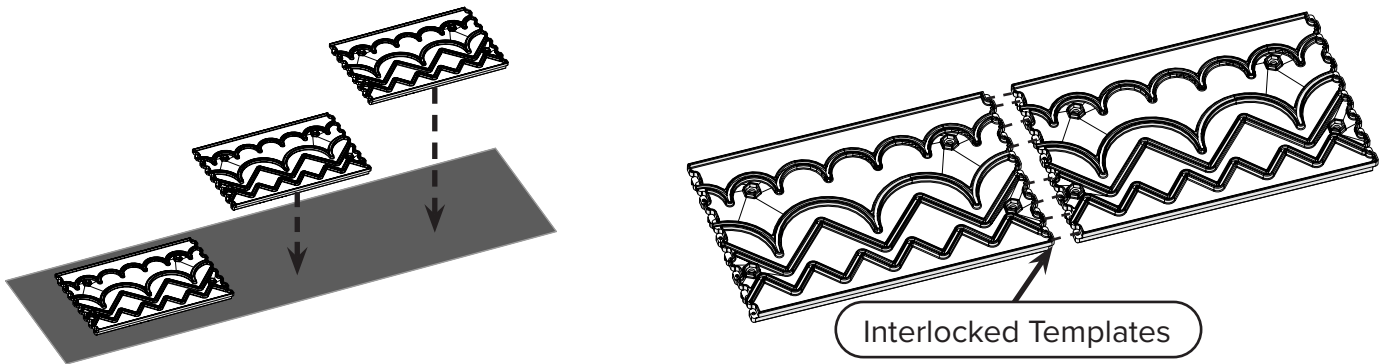


Task 4: Installing the Templates (continued)

- 2 Decide which pattern set you want to use, and place one of the **templates** face-up on the mat.

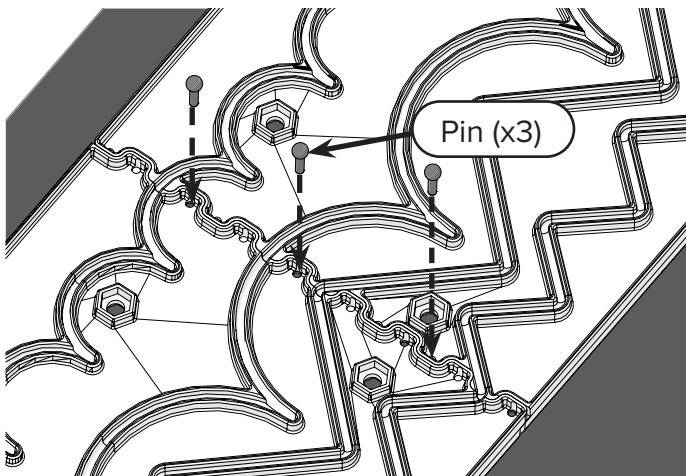


- 3 Place the next template in the pattern set, **interlocked** with the first. Repeat this step until the space is covered.



Note: The number of templates you need to use varies based on the size of your frame. Use enough patterns to cover the available quilting space on your frame without exceeding the space.

- 4 Connect the templates by inserting 3 **pins** into three of the connector holes on the ends of the templates. Repeat this step until all templates are connected to their neighbors.

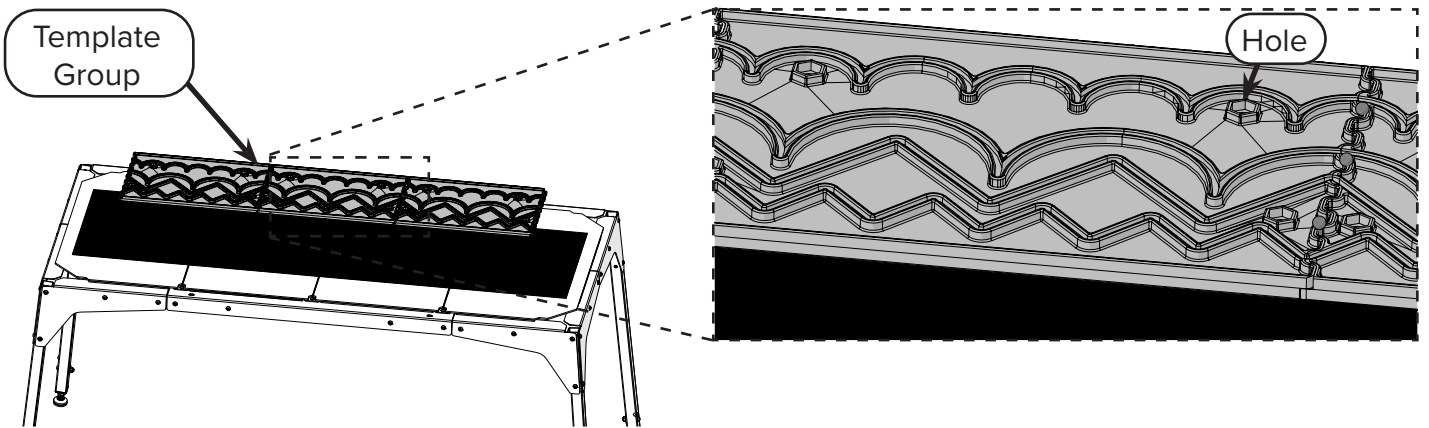


Note: If you're using a Cutie frame on a work surface (without the optional legs accessory), or a Cutie Breeze frame on a work surface, then skip steps 5 & 6. Your frame doesn't have a tabletop to attach the templates to.

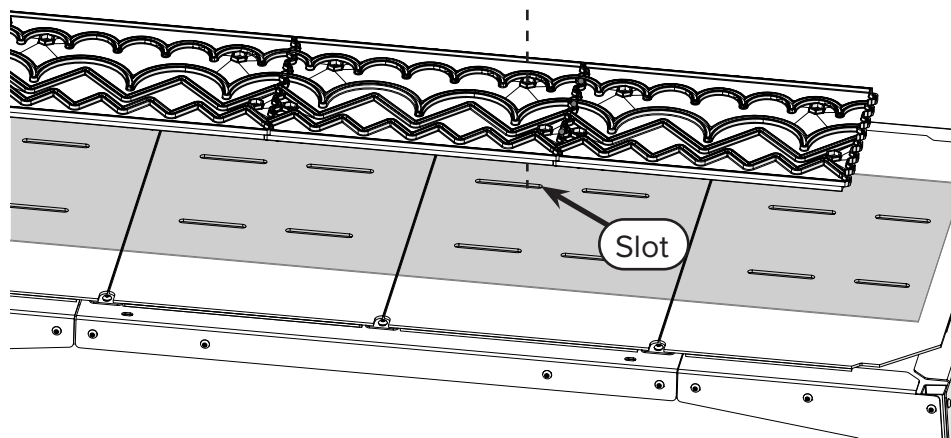
Task 4: Installing the Templates (continued)

5 Do the following to fasten the templates to the tabletop of your frame:

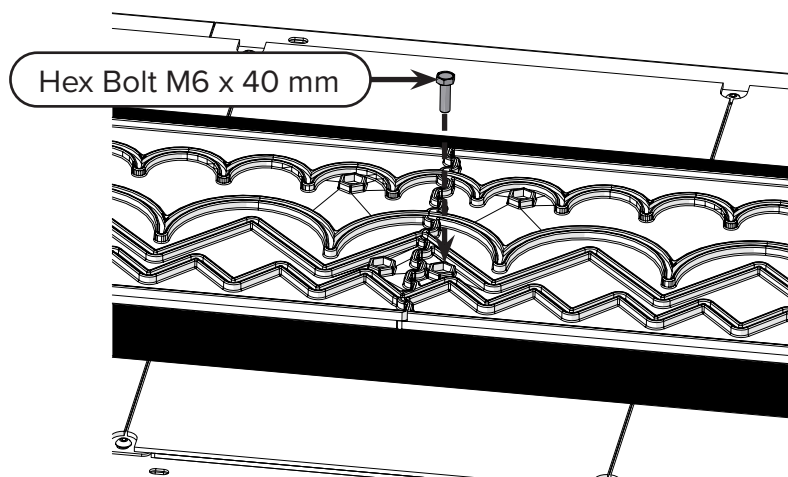
a Find a **hole** in the templates that is near the middle of the **template group**.



b Line up the hole with one of the **slots** in your frame's tabletop. **Note:** You might need to shift the templates slightly to line up the hole with a slot.

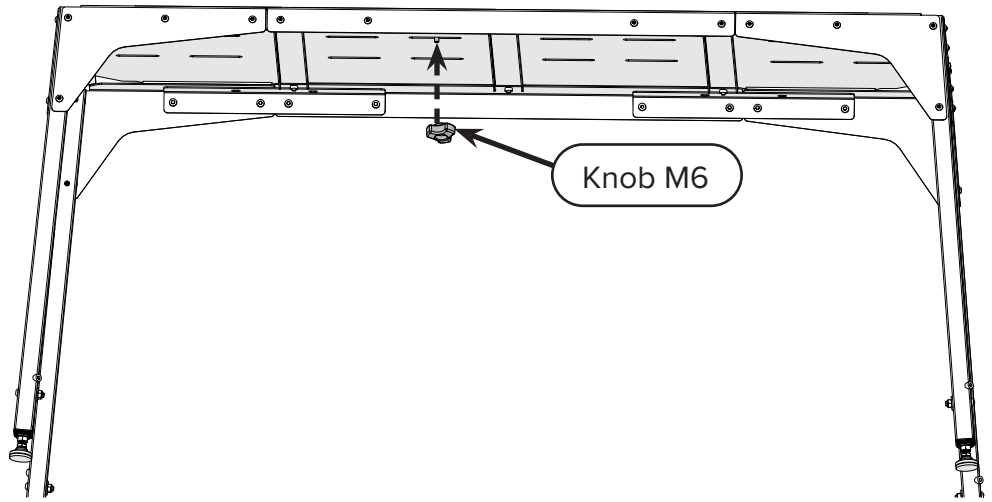


c Put an **M6 x 40 mm hex bolt** through the hole in the template, and then push it through the non-skid mat and into the slot in the tabletop that you lined up with the hole.

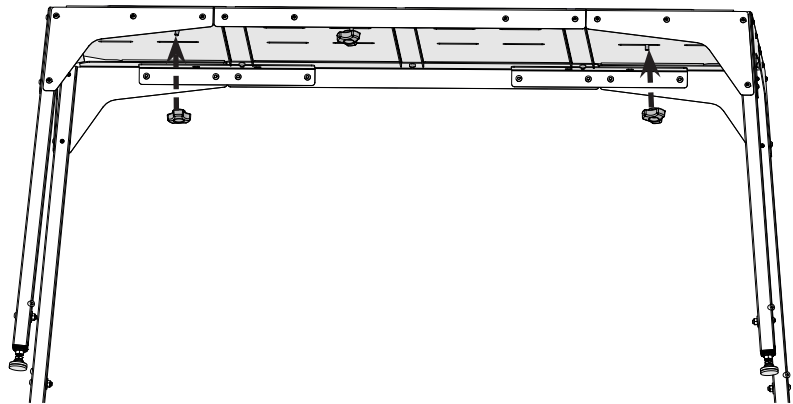


Task 4: Installing the Templates (continued)

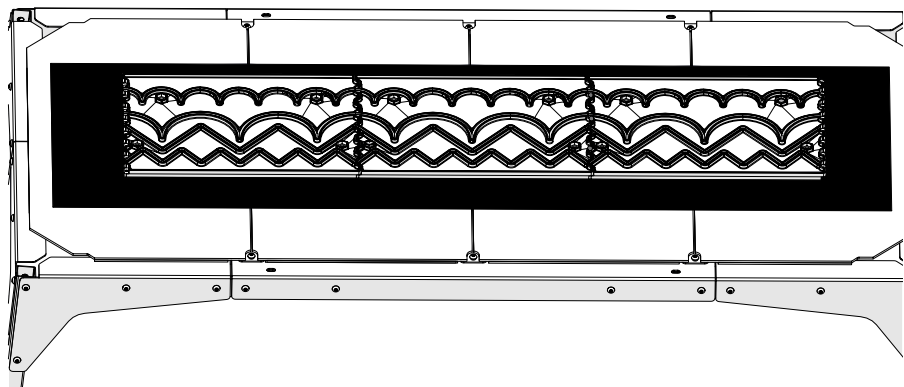
- d From under the tabletop, place an **M6 knob** onto the end of the hex bolt and tighten.



- 6 Repeat step 5 with the other two M6 x 40 mm hex bolts. Spread out the bolts on the frame so that the three securing points are roughly on the left, right, and middle of the frame.



- 7 **Task Result:** The templates for your chosen pattern set are installed on the tabletop on your frame or on the work surface under your frame.



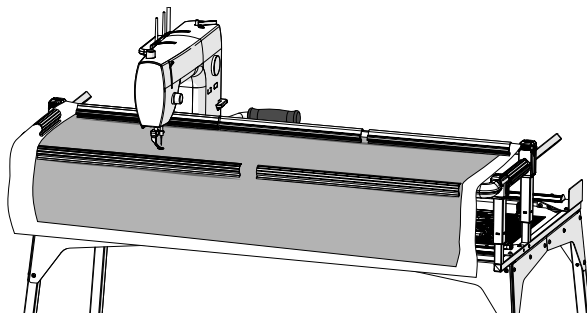
Task 5: Stitching Out Rows

Instructions

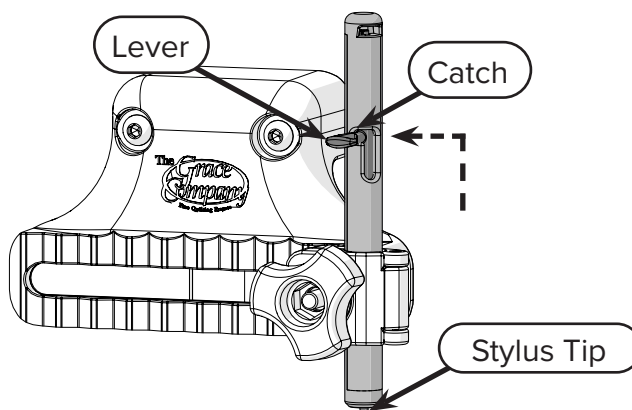
Once your chosen template is installed on the tabletop, you are ready to stitch out rows on your quilt.

To stitch out rows using Pattern Perfect:

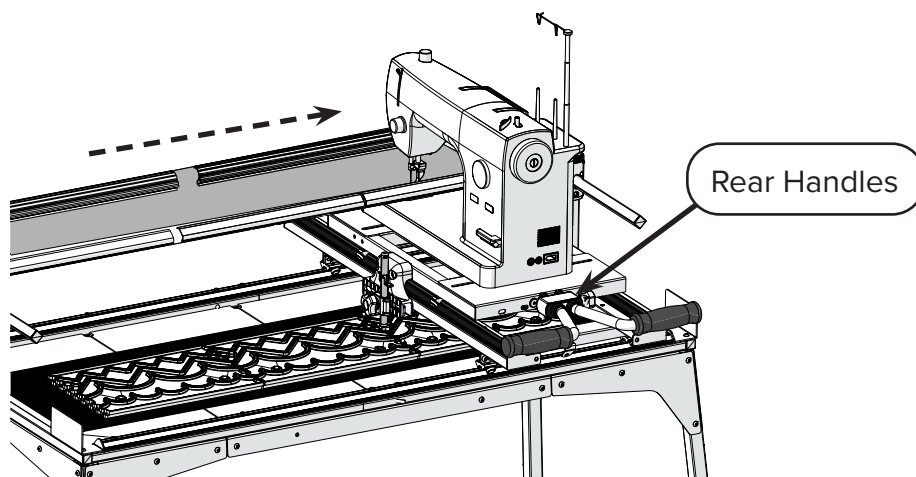
- 1 Put your quilt sandwich on the frame as normal. For more information, see your frame manual.



- 2 Lift the **lever** on the stylus to raise up the **stylus tip**, so you can freely move the machine. Slide the lever onto the **catch** so it stays up while you move the machine.

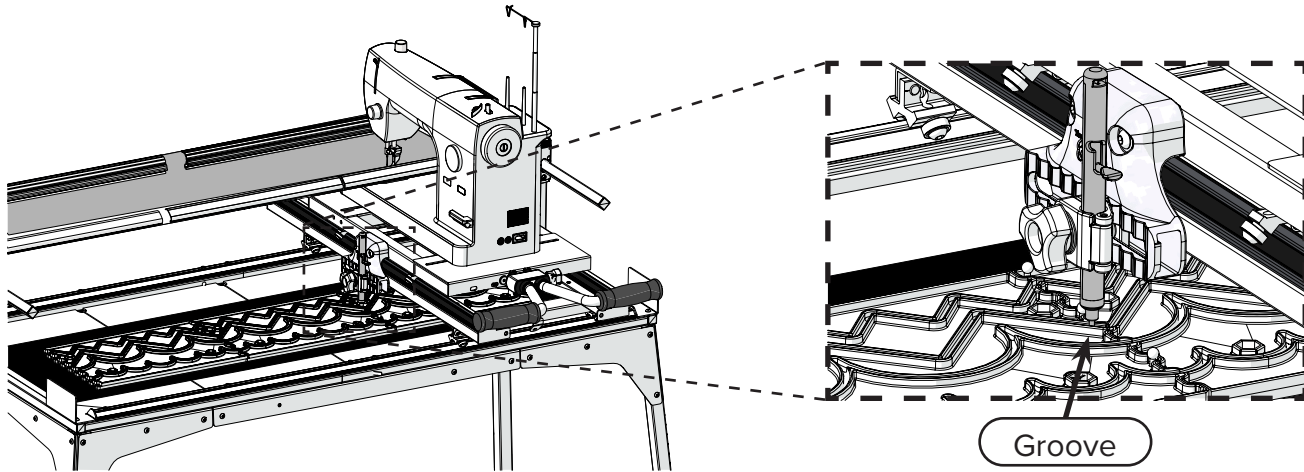


- 3 From the back of the frame, using the **rear handles**, move your machine to one side of your frame.

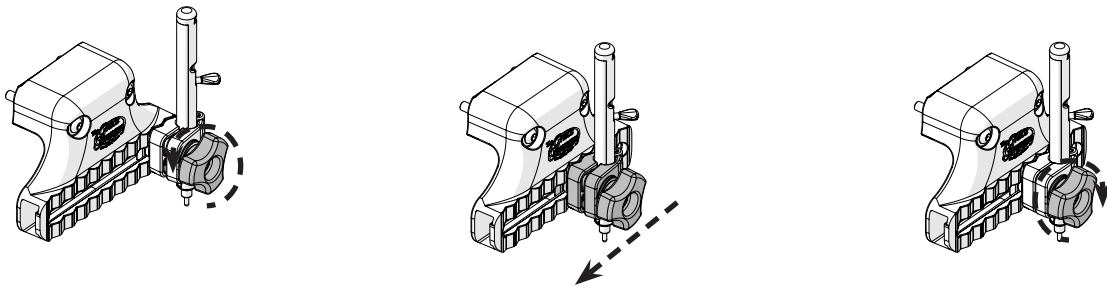


Task 5: Stitching Out Rows (continued)

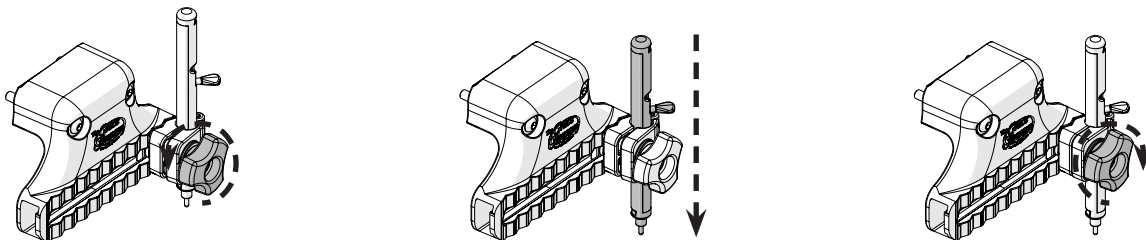
- 4 While keeping your machine near the side of the frame, move the machine so the stylus is above the **groove** of your chosen design, and then lower the tip into the groove using the stylus lever.



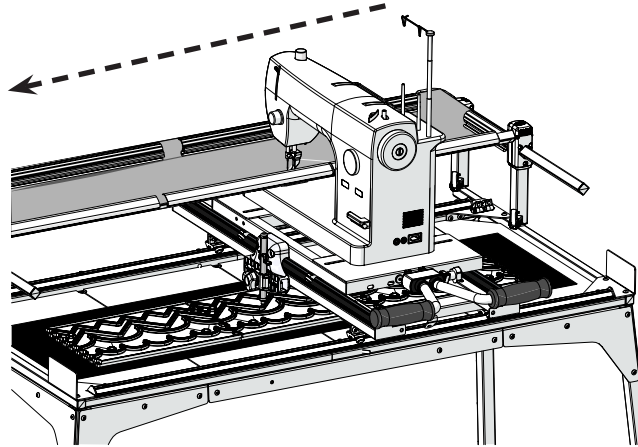
Note: You might need to adjust where the stylus is on the holder to get the stylus tip in the groove. To adjust the stylus, loosen the knob, and then slide the stylus holder until the notches are aligned. Each notch you slide is a ½ inch change. Tighten the knob when you're finished.



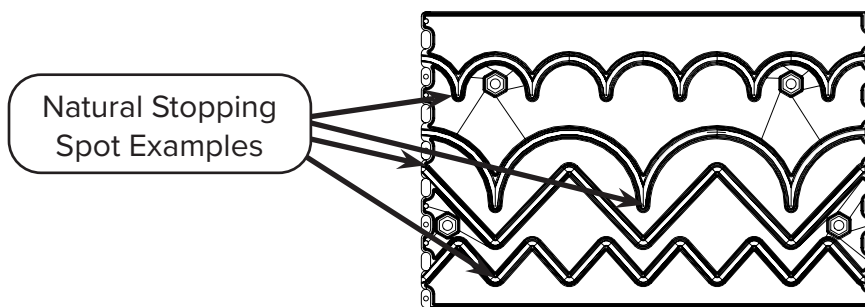
Note: Make sure the stylus is firmly pressed into the groove. To do this, you might have to loosen the knob on the stylus holder and push the stylus down a bit more. Tighten the knob when you're finished. If you ever find that the stylus tip is jumping out of the groove, pushing the stylus down farther in the holder will probably fix the issue.



- 5 While stitching, trace your design. Use the rear handles to move the machine.

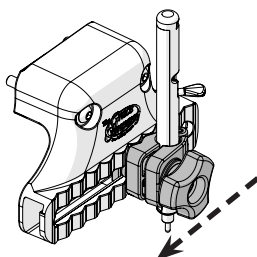


- 6 Stop stitching when you reach the end of the template group, or the other side of your frame, whichever comes first.

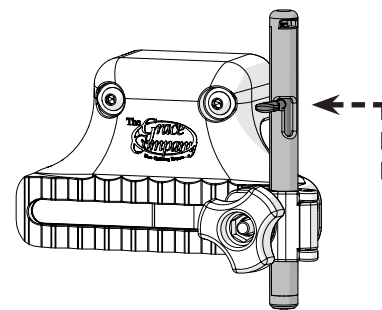


Tip: You might find that you prefer to stop tracing slightly early, such as when you've hit a **natural stopping spot**, rather than in the middle of a shape. Especially if you're using a hoop frame, doing so might make it easier to restart once you reposition your fabric to stitch the rest of the row.

- 7 Move the stylus along the bracket as many notches as you want while keeping the tip in the groove of the design. Because you can change the position of the stylus on the bracket in $\frac{1}{2}$ inch increments, you can normally do more than one row of your design before you need to adjust your fabric.

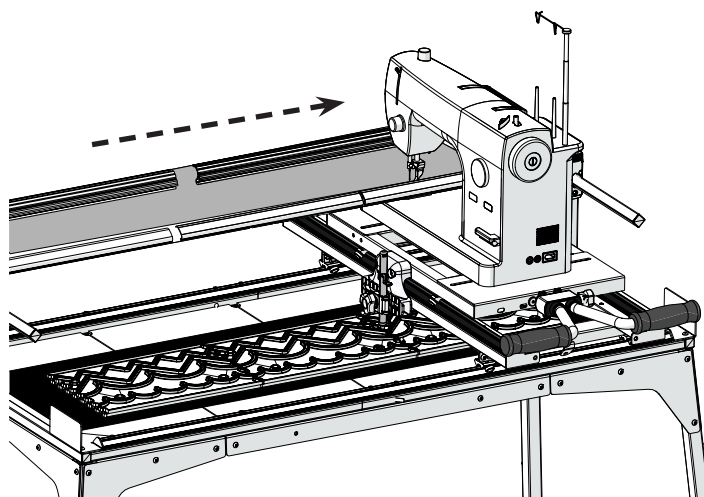


- 8 Once the stylus is in the new position, lift the stylus lever to raise the stylus tip out of the groove, and lock it in place with the catch.

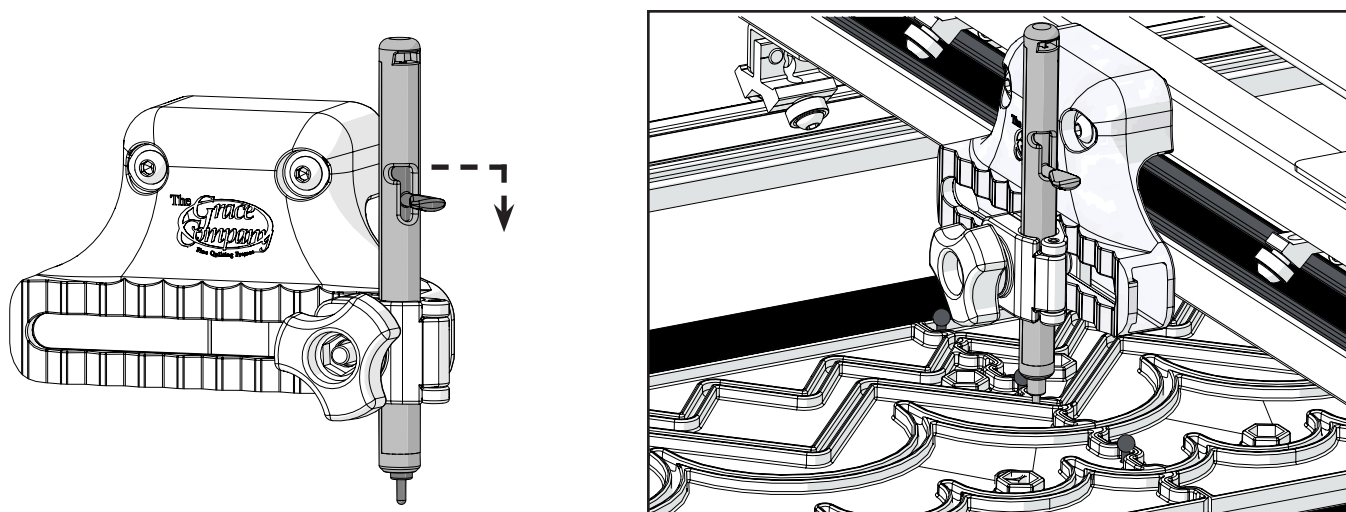


Task 5: Stitching Out Rows (continued)

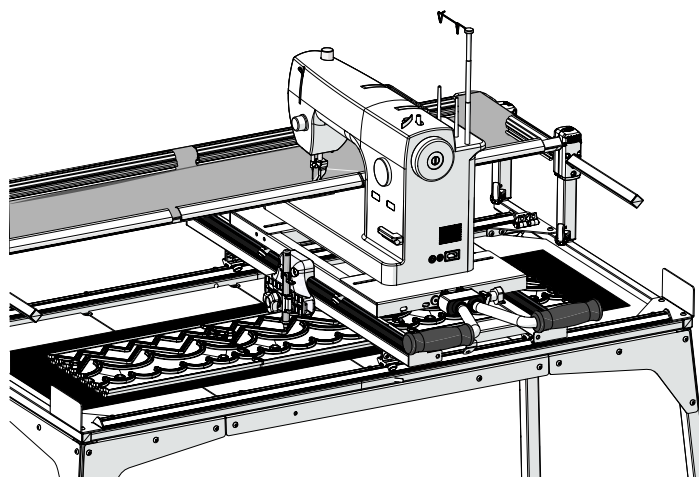
- 9 Move the machine back to the start of the template.



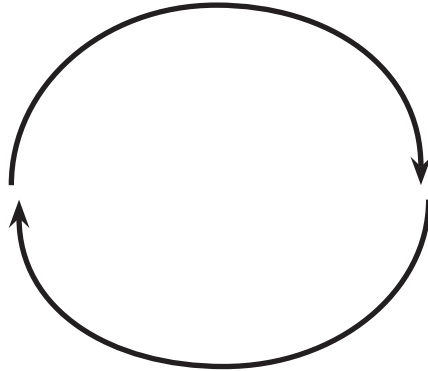
- 10 Lower the stylus lever and slot the tip into the groove of the design.



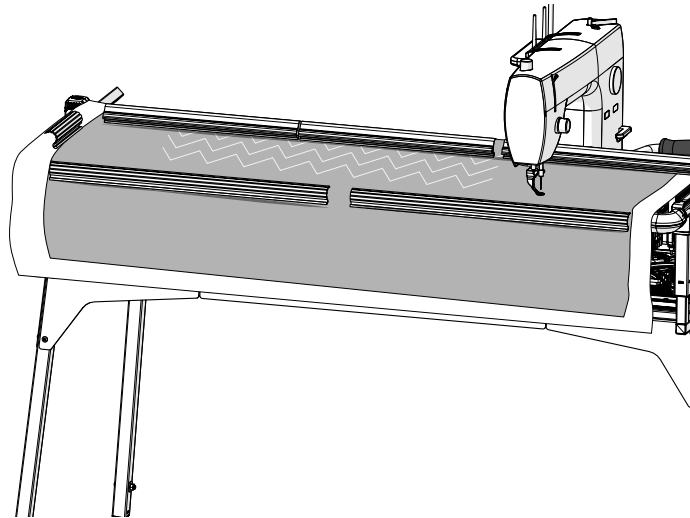
- 11 Stitch your next row.



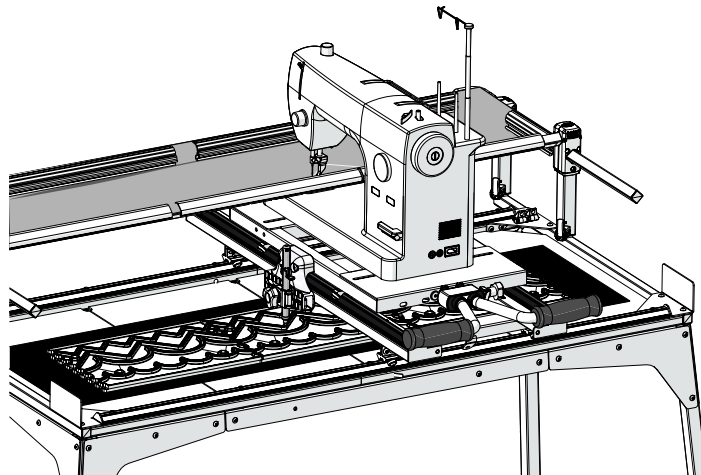
- 12 Repeat steps 7–11 until you can't move the stylus anymore. For example, if you started with the stylus as far forward as it can be, and moved the stylus in 2-inch (4-notch) increments, then you could stitch three rows before you couldn't move the stylus again.



- 13 Adjust your fabric so that your next row is spaced as far below the previous row as you want.



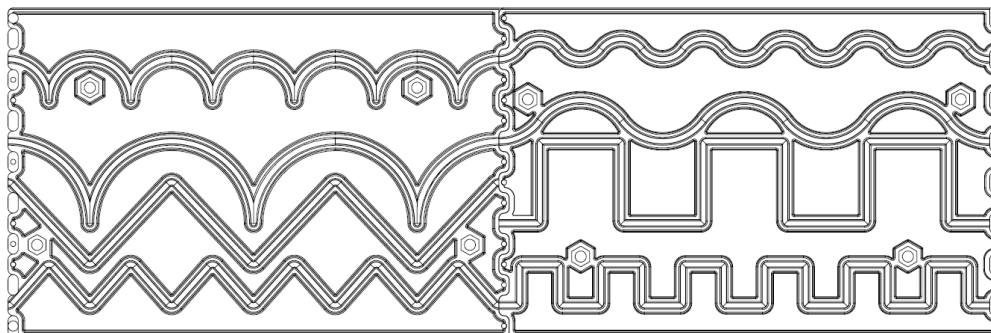
- 14 Stitch your next row.



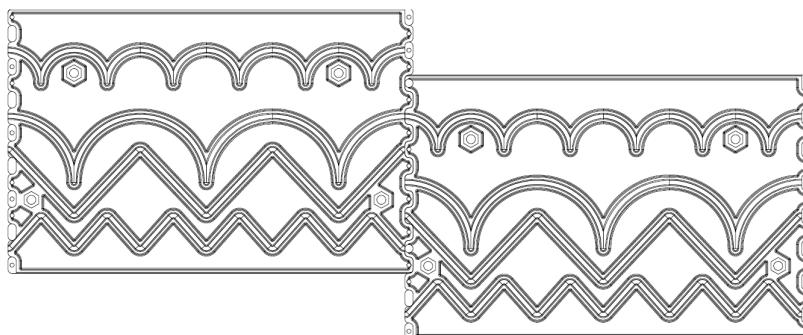
User Tips

The following tips might improve your experience with the Pattern Perfect product:

- If you're using Pattern Perfect with a Cutie or Cutie Breeze frame on a table or other work surface, trace the patterns gently to avoid sliding the plastic templates around. The non-skid mat helps prevent this as well. **Note:** If you are using the Cutie frame, then you can purchase the Cutie Legs accessory, which allows you to bolt down the non-skid mat and templates, which further decreases the chance of the template slipping. Visit graceframe.com for details.
- You can create different pattern combinations by offsetting individual templates. Combine patterns from either side of the templates (see example 1) or stagger the templates to line up different designs from the same or different sides of the templates (see example 2).



Example 1



Example 2

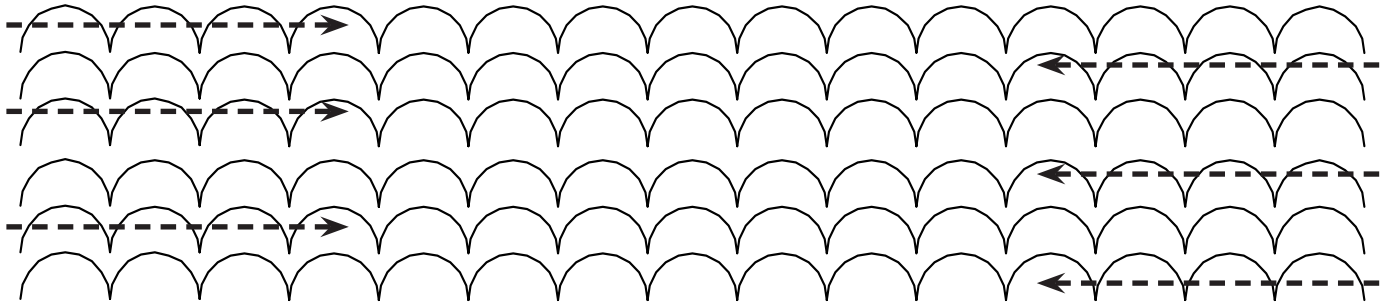
- Because you can change the position of the stylus on the bracket in $\frac{1}{2}$ inch increments, you can normally do more than one row of your design before you need to adjust your fabric. See “Template Guide Design Examples” on page 28 for some examples of designs that take advantage of this ability.

Template Guide Design Examples

You can create any of these example designs using the same basic idea: after you stitch the design across the quilt once, move the stylus forward or backward, or move the template right or left incrementally, or a combination of both before stitching the next row of the design. Combining different templates can create many different designs, beyond the examples below.

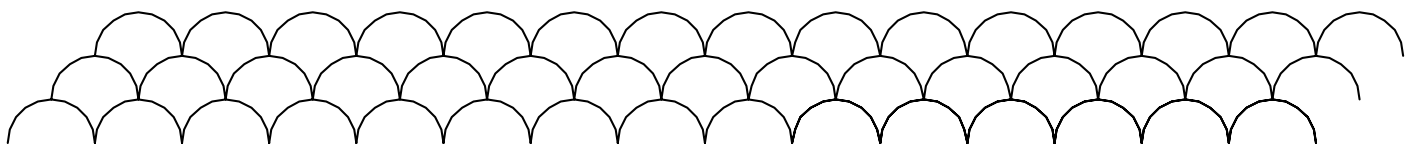
These examples are listed from least to most complex.

2-Inch Echoing of 4-Inch Scallop



- 1 Begin at one side of your quilt with the stylus as far forward as possible in the stylus bracket.
- 2 While stitching, trace the design from one side of your frame to the other.
- 3 Move the stylus 2 inches (4 notches) back while keeping the tip in the groove of the design.
- 4 Starting from the side you stopped at, repeat steps 2–3.
- 5 While stitching, trace the design again.
- 6 Reset the stylus to the front of the bracket. Move your fabric so that you can start the next design 2 inches below the last of your three rows.
- 7 Start with step 1 again. **Note:** Because you can only move the stylus back three times before you start over, you'll find that you end on the opposite side of the quilt from where you started. To make it easier to line up your pattern, start step 1 on the side you ended on, rather than beginning with the same side each time.

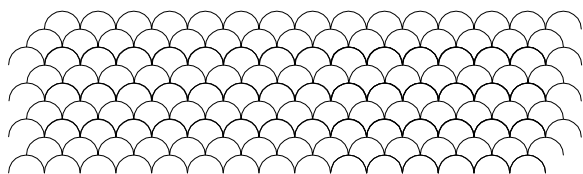
4-Inch Staggered Scallop



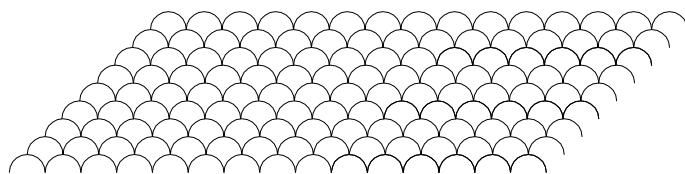
- 1 Begin at one side of your quilt with the stylus as far forward as possible in the stylus bracket.
- 2 While stitching, trace the design from one side of your frame to the other.
- 3 Move the stylus back 2 inches (4 notches) while keeping the tip in the groove of the design.
- 4 On the tabletop, shift the template over 2 inches. You might be able to slide the hex bolts in the slots in the tabletop, or you might have to use a different hole to attach the template.
- 5 While stitching, trace the design back across the frame.
- 6 Repeat steps 3–5.

User Tips (continued)

- 7 Reset the stylus to the front of the bracket. Move your fabric so that you can start the next design 2 inches below the last of your three rows.
- 8 Start with step 1 again. **Note:** You can choose whether to shift your template back (creating a “wiggle” look) or to keep your template where it is (creating more of a staircase look, with space to quilt a different design near it as the “stairs” go up).

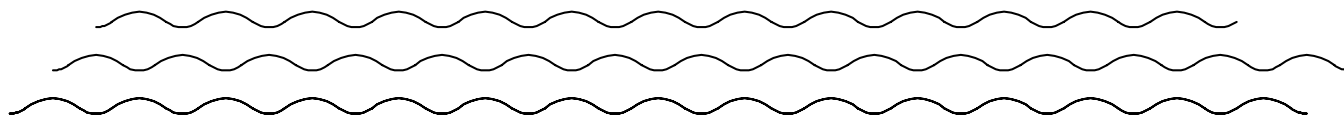


Wiggle

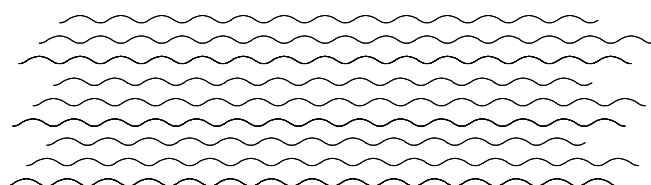


Staircase

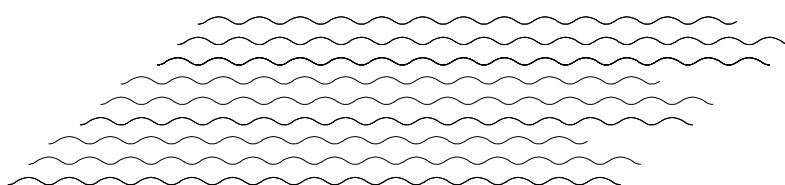
4-Inch Progressing Bump



- 1 Begin at one side of your quilt with the stylus as far forward as possible in the stylus bracket.
- 2 While stitching, trace the design from one side of your frame to the other.
- 3 Move the stylus back 2 inches (4 notches) while keeping the tip in the groove of the design.
- 4 On the tabletop, shift the template over 2 inches. You might be able to slide the hex bolts in the slots in the tabletop, or you might have to use a different hole to attach the template.
- 5 While stitching, trace the design back across the frame.
- 6 Repeat steps 3–5.
- 7 Reset the stylus to the front of the bracket. Move your fabric so that you can start the next design 2 inches below the last of your three rows.
- 8 Start with step 1 again. **Note:** You can choose whether to shift your template back (creating a three row “wiggle” look) or to keep your template where it is (creating more of a staircase look, with space to quilt a different design near it as the “stairs” go up).



Wiggle



Staircase

4-Inch Overlapping Bump



- 1 Begin at one side of your quilt with the stylus as far forward as possible in the stylus bracket.
- 2 While stitching, trace the design from one side of your frame to the other.
- 3 On the tabletop, shift the template over 2 inches. You might be able to slide the hex bolts in the slots in the tabletop, or you might have to use a different hole to attach the template.
- 4 While stitching, trace the design back across the frame.
- 5 Decide how much space you want between the rows. Move the stylus back by that much. (Remember, moving the stylus by 1 notch moves it ½ inch.)
- 6 On the tabletop, shift the template back to its original spot.
- 7 Repeat steps 2–6.
- 8 Keep doing this process until you can't move the stylus back any more. Then, reset the stylus to the front of the bracket. Move your fabric so that you can start the next design as far beneath the previous row as you wanted.
- 9 Start with step 1 again.

4-Inch Overlapping V Pattern

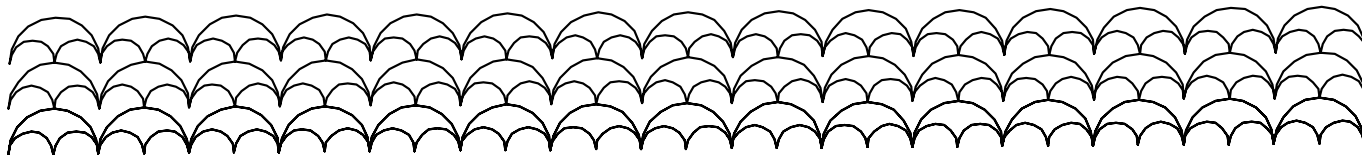


- 1 Begin at one side of your quilt with the stylus as far forward as possible in the stylus bracket.
- 2 While stitching, trace the design from one side of your frame to the other.
- 3 On the tabletop, shift the template over 1 inch. You might be able to slide the hex bolts in the slots in the tabletop, or you might have to use a different hole to attach the template.
- 4 While stitching, trace the design back across the frame.
- 5 Repeat steps 3–4.
- 6 Decide how much space you want between the rows. Move the stylus back by that much. (Remember, moving the stylus by 1 notch moves it ½ inch.)
- 7 On the tabletop, shift the template back to its original spot.
- 8 Repeat steps 2–7.

User Tips (continued)

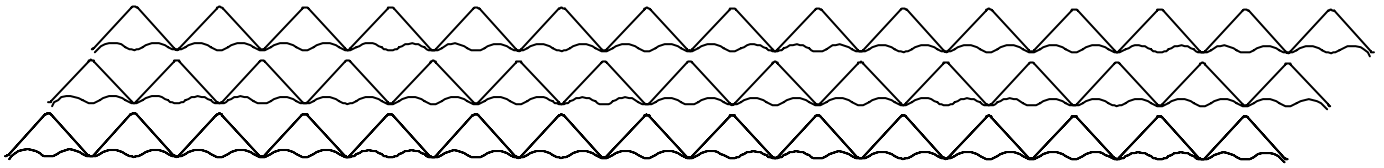
- 9 Keep doing this process until you can't move the stylus back any more. Then, reset the stylus to the front of the bracket. Move your fabric so that you can start the next design as far beneath the previous row as you wanted.
- 10 Start with step 1 again.

Large & Small Scallop Combination



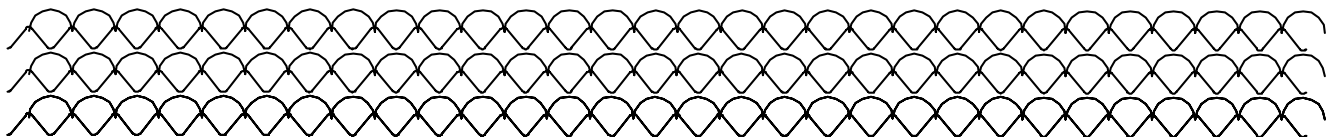
- 1 Begin at one side of your quilt with the stylus as far forward as possible in the stylus bracket. The first time you do the process, start with the large scallop.
- 2 While stitching, trace the design across the frame.
- 3 Move the stylus back 2 inches (4 notches).
- 4 Repeat steps 2–3.
- 5 While stitching, trace the design once more.
- 6 Reset the stylus to the front of the bracket.
- 7 Move the stylus to the start point for the next design. The first time you do the process, this will be the small scallop design.
- 8 Adjust the fabric so that the needle is lined up with the start of the first design (you want the small scallop to start at the same point as the large scallop). **Note:** You might need to shift the template on the tabletop to get the start points to line up. If you're not sure how much to shift the template, then measure *horizontally* from where the needle currently is to where you want it to be, and then shift the template horizontally by that much.
- 9 Repeat steps 1–5, tracing over the small scallop design this time.
- 10 Next, repeat steps 6–7 to set up the template for the next rows of large scallops.
- 11 Adjust the fabric so that the needle is set 2 inches forward from the last row.
- 12 Start with step 1 again.

Small Bump & Large V Combination



- 1 Begin at one side of your quilt with the stylus as far forward as possible in the stylus bracket. The first time you do the process, start with the large V.
- 2 While stitching, trace the design across the frame.
- 3 Move the stylus back 2 inches (4 notches).
- 4 Repeat steps 2–3.
- 5 While stitching, trace the design once more.
- 6 Reset the stylus to the front of the bracket.
- 7 Move the stylus to the start point for the next design. The first time you do the process, this will be the small bump design.
- 8 Adjust the fabric so that the needle is lined up with the start of the first design (you want the small bump to start at the same point as the large V). **Note:** You might need to shift the template on the tabletop to get the start points to line up. If you're not sure how much to shift the template, then measure *horizontally* from where the needle currently is to where you want it to be, and then shift the template by that much.
- 9 Repeat steps 1–5, tracing over the small bump design this time.
- 10 Next, repeat steps 6–7 to set up the template for the next rows of large V.
- 11 Adjust the fabric so that the needle is set 2 inches forward from the last row.
- 12 Start with step 1 again.

Small V & Small Scallop Combination

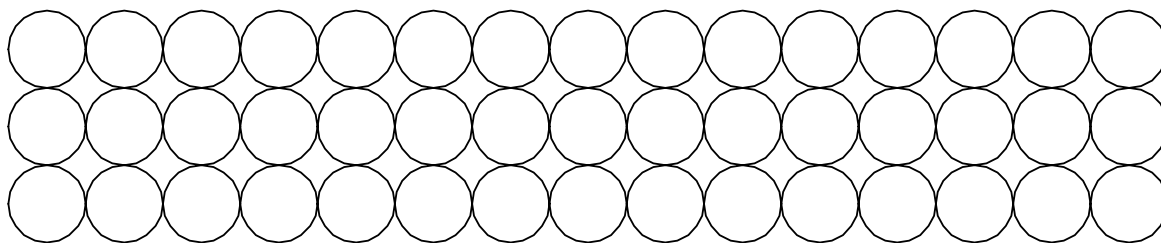


- 1 Begin at one side of your quilt with the stylus as far forward as possible in the stylus bracket.
- 2 While stitching, trace the small V design from one side of your frame to the other.
- 3 Move the stylus 2 inches (4 notches) back.

User Tips (continued)

- 4 Starting from the side you stopped at, repeat steps 2–3.
- 5 While stitching, trace the design again.
- 6 Reset the stylus to the front of the bracket.
- 7 Move the stylus to the start point of the next design. The first time you do the process, this will be the small scallop design.
- 8 Adjust the fabric and shift the template so that the needle is lined up 1 inch forward and 1 inch over from the start of the small V (you want the small scallop to start on the tip of the small V).
Note: If you're not sure how much to shift the template, then measure *horizontally* from where the needle currently is to where you want it to be, and then shift the template by that much.
- 9 Repeat steps 1–5, tracing the small scallop design this time.
- 10 Next, repeat steps 6–8 to set up the template for the next rows of the small V design.
- 11 Adjust the fabric and shift the template so that the needle is lined up for the next set of small V rows 2 inches forward from the last row.
- 12 Start with step 1 again.

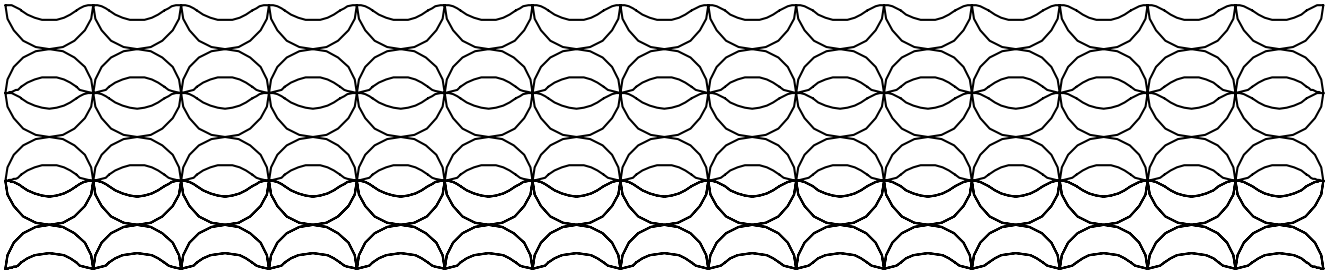
Large Scallop Reversed Combination



- 1 Begin at one side of your quilt with the stylus as far forward as possible in the stylus bracket.
- 2 While stitching, trace the design across the frame.
- 3 Raise up the stylus, so it's not in the groove of the template.
- 4 Rotate the templates so that the large scallop is oriented 180 degrees from the first time.
- 5 Lower the stylus into the groove of the large scallop, at the starting point of the design.
- 6 Adjust the fabric so that the needle is lined up with the start of the first design (you want the reversed large scallop to start at the same point as the large scallop).
- 7 Repeat steps 1–3 with the reversed large scallop design.
- 8 Move the stylus all the way back (4 inches or 8 notches).
- 9 Rotate the templates so that the large scallop is oriented the same way as the first time.

- 10 Repeat steps 2–7.
- 11 Reset the stylus to the front of the bracket.
- 12 Adjust your fabric so that the needle is 4 inches forward from the last row.
- 13 Start with step 1 again.

Large Scallop & Large Bump Combination



- 1 Begin at one side of your quilt with the stylus as far back as possible in the stylus bracket. The first time you do this process, start with the large scallop.
- 2 While stitching, trace the design across the frame.
- 3 Raise up the stylus, so it's not in the groove of the template.
- 4 Turn over the templates and set them so that the large bump design is facing up.
- 5 Lower the stylus into the groove of the large bump, at the starting point of the design.
- 6 Adjust the fabric so that the needle is lined up with the start of the first design (you want the large bump to start at the same point as the large scallop). **Note:** You might need to shift the template on the tabletop to get the start points to line up.
- 7 Repeat steps 1–3 with the large bump design.
- 8 Turn over the templates and set them up so that the large scallop design is facing up. This time, also rotate the template so that the large scallop is oriented 180 degrees from the first time.
- 9 Lower the stylus into the groove of the large scallop, at the starting point of the design.
- 10 Adjust your fabric so that the needle is 4 inches forward from the last row.
- 11 Repeat steps 1–3 with the reversed large scallop.
- 12 Next, repeat steps 4–7. This time, in step 4, also rotate the template so that the large bump is oriented 180 degrees from the first time.
- 13 Repeat steps 8–10.
- 14 Start with step 1 again.

Grace
COMPANY

www.graceframe.com

1-801-485-6688